

Coğrafi Bilgi Sistemleri Uygulamaları

5. Ders

Konumsal Sorgulamalar

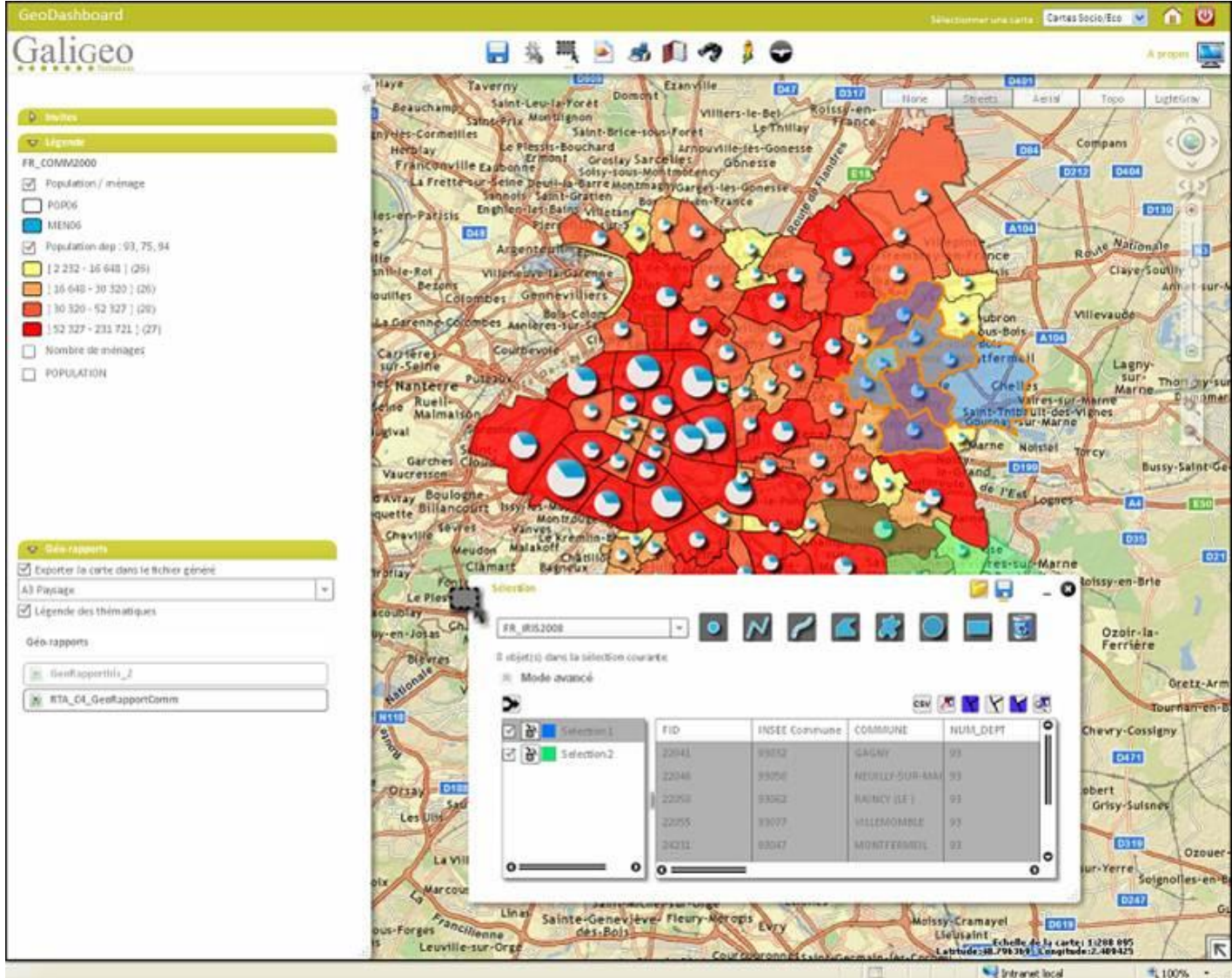
Doç. Dr. Aziz ŞİŞMAN

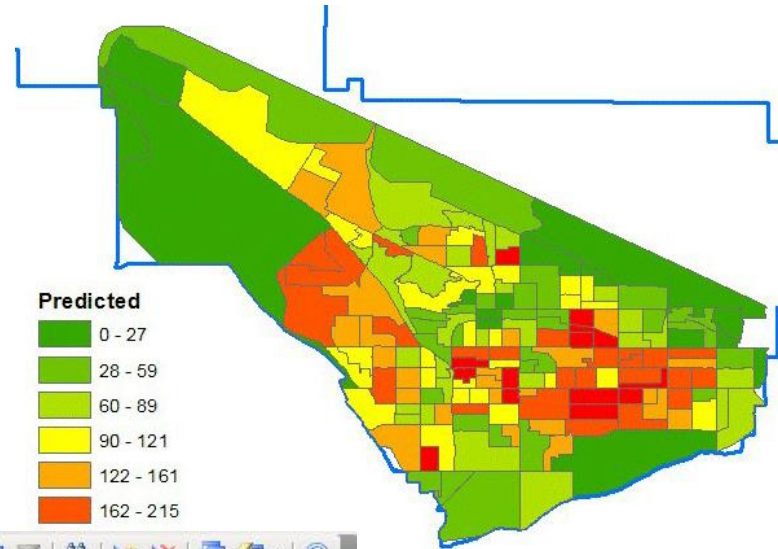
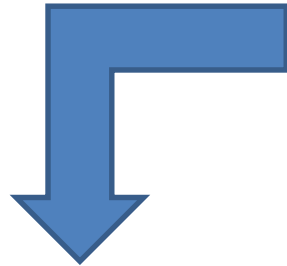
Konumsal sorgulamalar

- CBS de her bir detaya özgü geometrik ve öznitelik bilgisi uygun veri tabanlarında barındırılır, gerektiğinde bu detay bilgileri karşılıklı olarak ilişkilendirilebilir.
- Detay verileri arasında kurulan bu ilişkiler yardımıyla grafik bilgilerden tanımsal bilgilere, tanımsal bilgilerden grafik bilgilerine erişme işlemlerinin herbiri konumsal sorgulama olarak adlandırılır.

Konumsal sorgulamalar

- Kullanım cinsi okul olan alanların, sınıf, öğrenci, öğretmen sayıları.
- 2000 yılından sonra inşa edilen okullar.
- Betonarme binalar.
- Kullanım cinsi okul olan alanların, sınıf, öğrenci, öğretmen sayıları.
- 2000 yılından sonra inşa edilen okullar.
- Betonarme binalar.

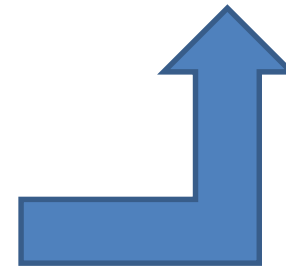




Orders Qry : Select Query

Order ID	Customer	Employee	Order Date	Required Date
10643	Alfreds Futterkiste	Suyama, Michael	25-Aug-1997	22-Sep-1997
10692	Alfreds Futterkiste	Peacock, Margaret	03-Oct-1997	31-Oct-1997
10702	Alfreds Futterkiste	Peacock, Margaret	13-Oct-1997	24-Nov-1997
10835	Alfreds Futterkiste	Davolio, Nancy	15-Jan-1998	12-Feb-1998
10952	Alfreds Futterkiste	Davolio, Nancy	16-Mar-1998	27-Apr-1998
11011	Alfreds Futterkiste	Leverling, Janet	09-Apr-1998	07-May-1998
10308	Ana Trujillo Emparedados y heladerias	King, Robert	18-Sep-1996	16-Oct-1996
10625	Ana Trujillo Emparedados y heladerias	Leverling, Janet	08-Aug-1997	05-Sep-1997
10759	Ana Trujillo Emparedados y heladerias	Leverling, Janet	28-Nov-1997	26-Dec-1997
10926	Ana Trujillo Emparedados y heladerias	Peacock, Margaret	04-Mar-1998	01-Apr-1998
10365	Antonio Moreno Taquería	Leverling, Janet	27-Nov-1996	25-Dec-1996
10507	Antonio Moreno Taquería	King, Robert	15-Apr-1997	13-May-1997
10535	Antonio Moreno Taquería	Peacock, Margaret	13-May-1997	10-Jun-1997
10573	Antonio Moreno Taquería	King, Robert	19-Jun-1997	17-Jul-1997

Record: 1 of 830

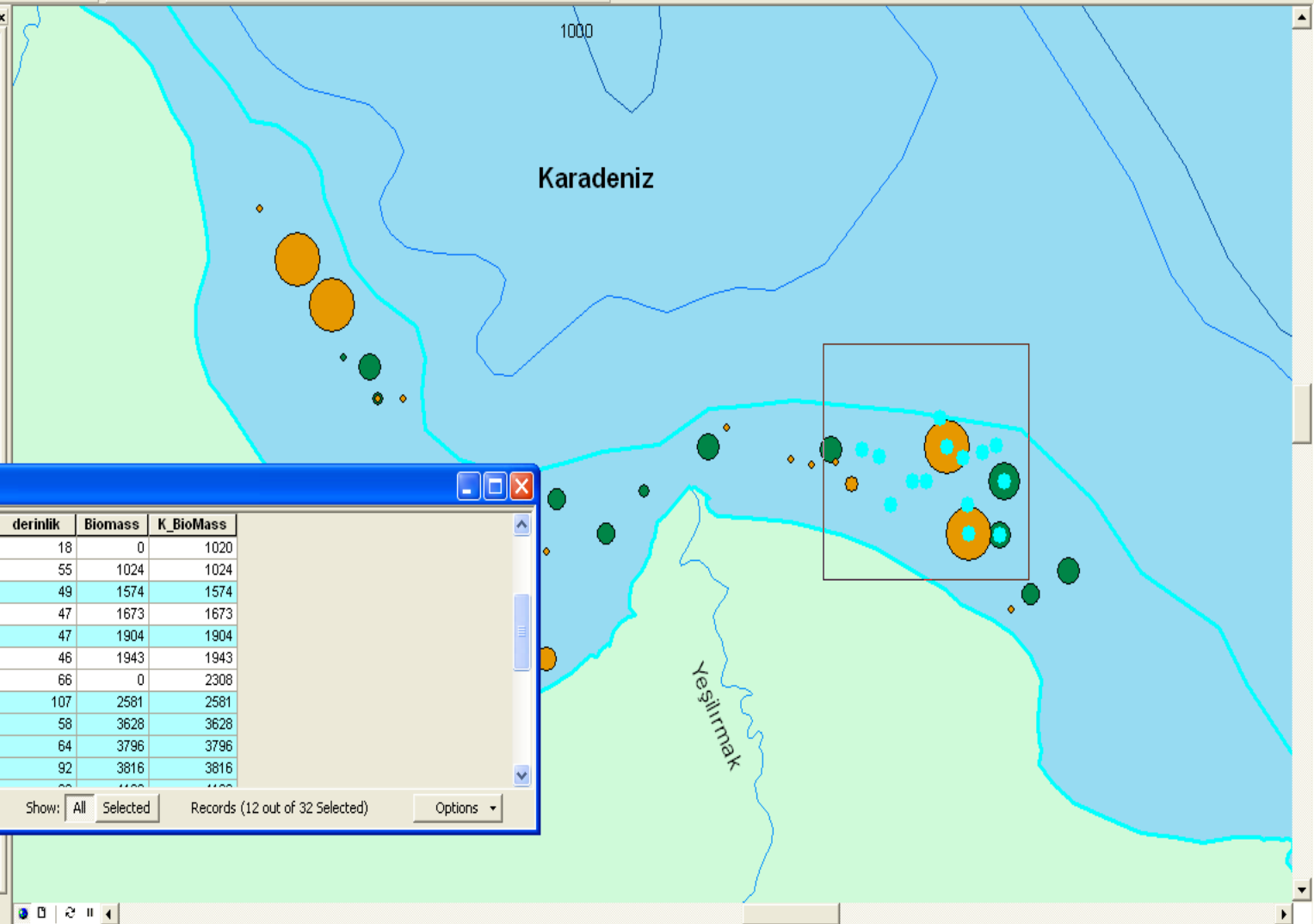


Grafik Bilgilerden Öznitelik Bilgilerinin Sorgulanması

- Veri tabanında verinin mevcut olması, ayrıca gözün ayırt edebileceği bir ölçekte bulunması durumunda imleç ile tıklanan nesneye ait öznitelik bilgilerine ulaşılabilir.

Layers

- MezigitBiomass
 - K_BioMass
 - 56 - 2581
 - 2582 - 7302
 - 7303 - 39281
 - 39282 - 127117
- kalkanBiomass
 - biomass
 - 6 - 23
 - 24 - 254
 - 255 - 975
 - 976 - 2376
- ...
- ...
- ...
- New_Shapefile



Attributes of MezigitBiomass

FID	Shape *	Id	derinlik	Biomass	K_BioMass
23	Point	24	18	0	1020
11	Point	12	55	1024	1024
4	Point	5	49	1574	1574
12	Point	13	47	1673	1673
1	Point	2	47	1904	1904
5	Point	6	46	1943	1943
22	Point	23	66	0	2308
17	Point	18	107	2581	2581
9	Point	10	58	3628	3628
10	Point	11	64	3796	3796
16	Point	17	92	3816	3816

Record: 1 | Show: All Selected | Records (12 out of 32 Selected) | Options

Öznitelik Bilgilerinden Grafik Bilgilerinin Sorgulanması

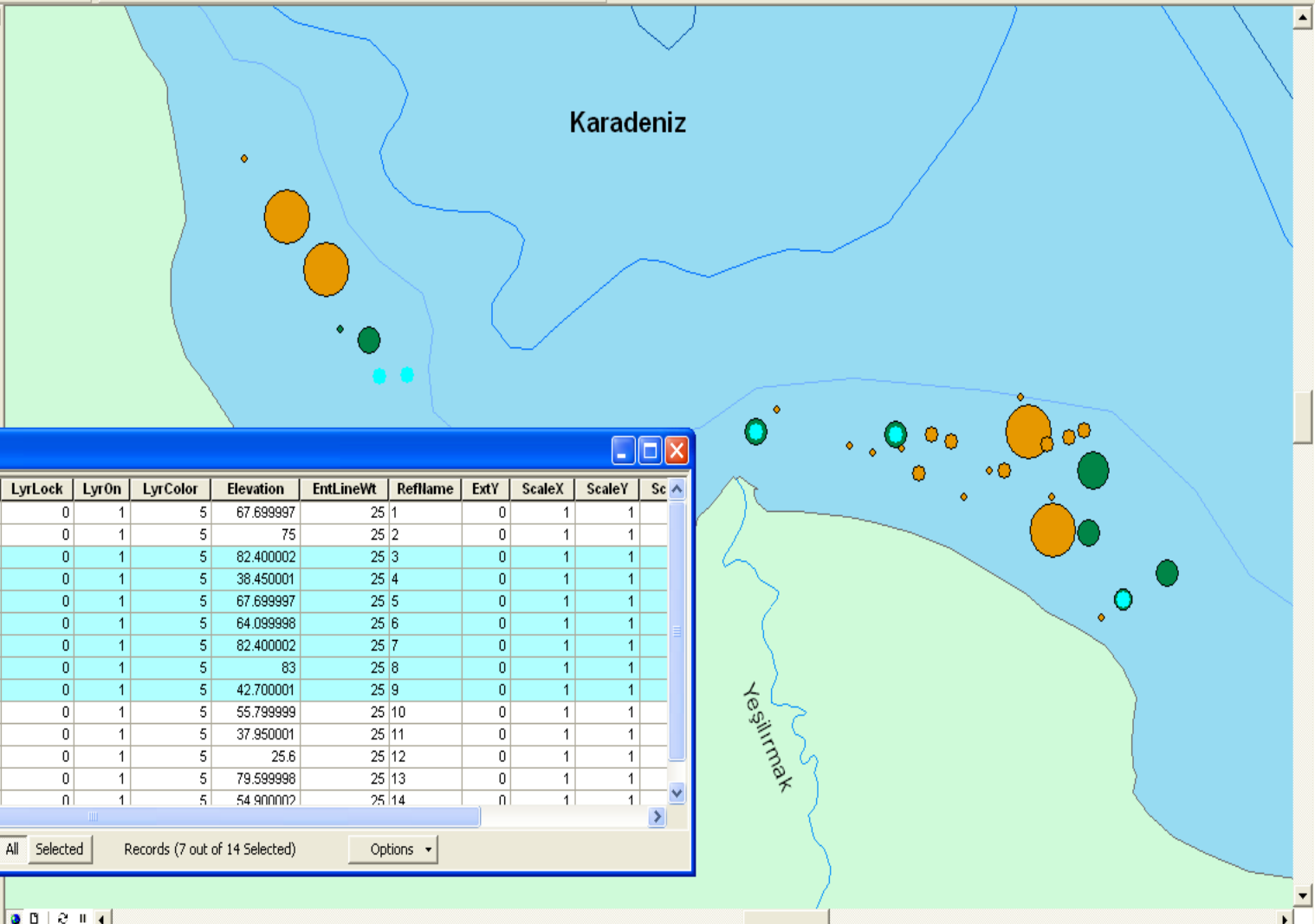
- Mevcut veri tabanındaki öznitelik verilerinden hareketle bu verilerin ilişkili olduğu grafik verilerin sorgulanması işlemidir.
- Uzunluğu 500 m den kısa olan yollar,
- Cinsi, bahçe olan taşınmazlar.
- Çapı 5 inç olan boru hatları, vb..

1:344,476

Editor Task: Create New Feature Target: Geostatistical Analyst 3D Analyst Layer: Spatial Analyst Georeferencing Layer:

Layers

- MezgıtBiomass
 - K_BioMass
 - 56 - 2581
 - 2582 - 7302
 - 7303 - 39281
 - 39282 - 127117
- kalkınBiomass
 - biomass
 - 6 - 23
 - 24 - 254
 - 255 - 975
 - 976 - 2376



Attributes of çaçabiomasson_DXF_Point

FID	Shape	Entity	Handle	Layer	LyrLock	LyrOn	LyrColor	Elevation	EntLineWt	Reflame	ExtY	ScaleX	ScaleY	Sc
12	Point ZM	Point	32	NOKTA	0	1	5	67.699997	25 1		0	1	1	
13	Point ZM	Point	33	NOKTA	0	1	5	75	25 2		0	1	1	
7	Point ZM	Point	2D	NOKTA	0	1	5	82.400002	25 3		0	1	1	
6	Point ZM	Point	2C	NOKTA	0	1	5	38.450001	25 4		0	1	1	
10	Point ZM	Point	30	NOKTA	0	1	5	67.699997	25 5		0	1	1	
11	Point ZM	Point	31	NOKTA	0	1	5	64.099998	25 6		0	1	1	
1	Point ZM	Point	27	NOKTA	0	1	5	82.400002	25 7		0	1	1	
5	Point ZM	Point	2B	NOKTA	0	1	5	83	25 8		0	1	1	
8	Point ZM	Point	2E	NOKTA	0	1	5	42.700001	25 9		0	1	1	
9	Point ZM	Point	2F	NOKTA	0	1	5	55.799999	25 10		0	1	1	
4	Point ZM	Point	2A	NOKTA	0	1	5	37.950001	25 11		0	1	1	
2	Point ZM	Point	28	NOKTA	0	1	5	25.6	25 12		0	1	1	
3	Point ZM	Point	29	NOKTA	0	1	5	79.599998	25 13		0	1	1	
0	Point ZM	Point	26	NOKTA	0	1	5	54.900002	25 14		0	1	1	

Record: 1 Show: All Selected Records (7 out of 14 Selected) Options

Display Source Selection

Drawing Arial 10 B I U A

Select By Attributes – Özniteliklerine Göre Sorgulama

The screenshot displays the ArcMap interface with the 'Select By Attributes' dialog box open. The dialog box is configured for the 'trees' layer and uses the 'Create a new selection' method. The attribute list includes 'SURVEYOR', 'COMMON_NAME', 'LATIN_NAME', 'GROWTH_FORM', 'SIZE', and 'HEIGHT_CLASS'. The 'SIZE' attribute is selected with the operator '>' and the value '10'. The SQL query in the dialog is 'SELECT * FROM trees WHERE: "SIZE" > 10'. The map shows a site plan with buildings and trees. The trees selected by the query are highlighted in cyan. The 'Tools' toolbar is visible on the right side of the map. The 'Layout' toolbar is visible at the bottom of the map area. The status bar at the bottom shows the drawing toolbar, scale (10), font (Arial), and coordinates (87°43'14.698"W 41°59'0.787"N). The page number 10 is displayed in the bottom right corner.

Layer: trees
Only show selectable layers in this list
Method: Create a new selection

"SURVEYOR"
"COMMON_NAME"
"LATIN_NAME"
"GROWTH_FORM"
"SIZE"
"HEIGHT_CLASS"

= <> Like 9.8
> >= And 10.1
< <= Or 10.2
_ % () Not 10.25
10.3
10.4
10.8
10.0

Is Get Unique Values Go To:

SELECT * FROM trees WHERE:
"SIZE" > 10

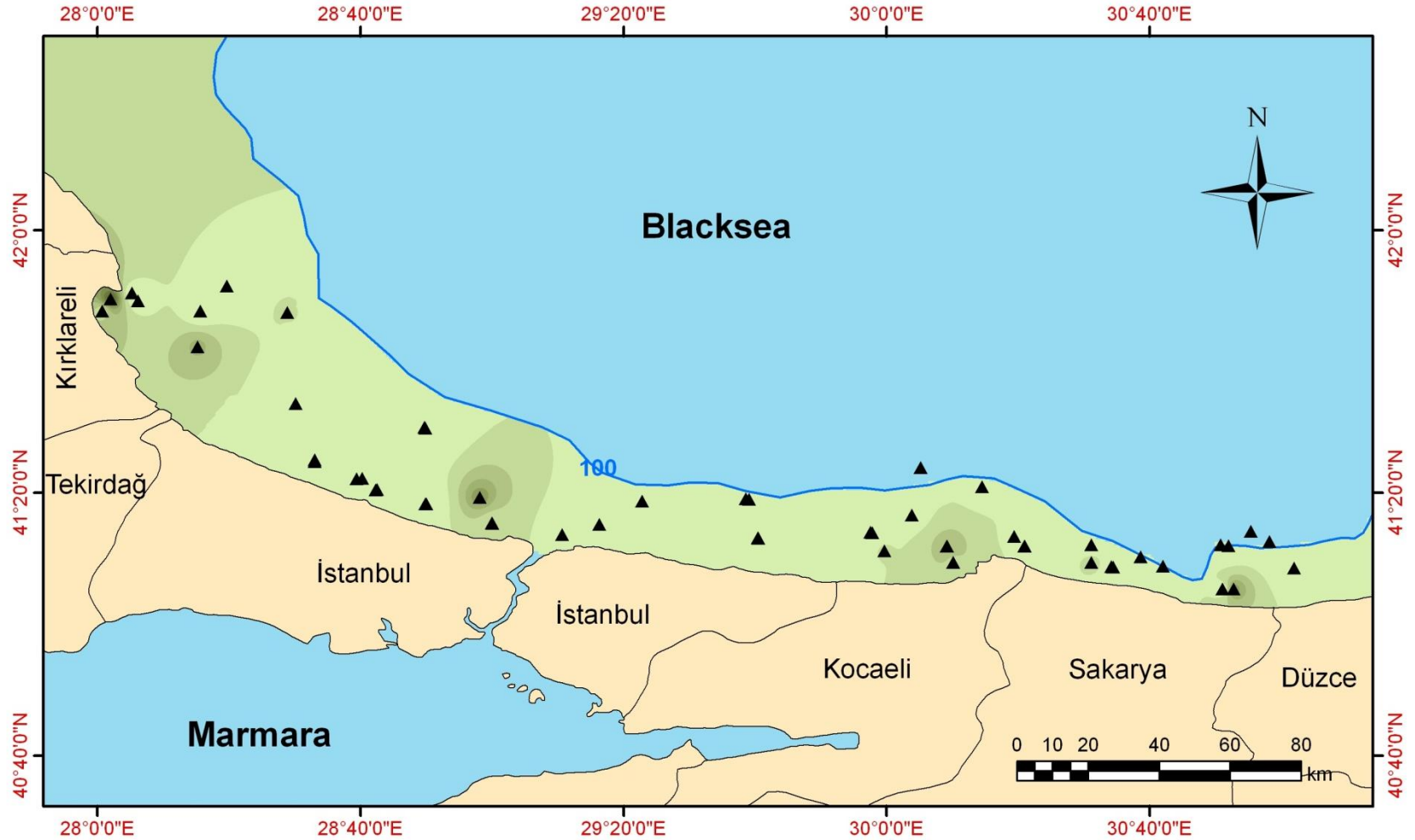
Clear Verify Help Load... Save...
OK Apply Close

TREES01
Sum_Output_2
SITEPLAN00DXF

Layout
100%

Display Source Selection
Drawing 10 Arial

CBS de Konum Analizleri & A.ŞİŞMAN 2019
87°43'14.698"W 41°59'0.787"N 10
5:23 PM



CUPA (kg/sq.km)

