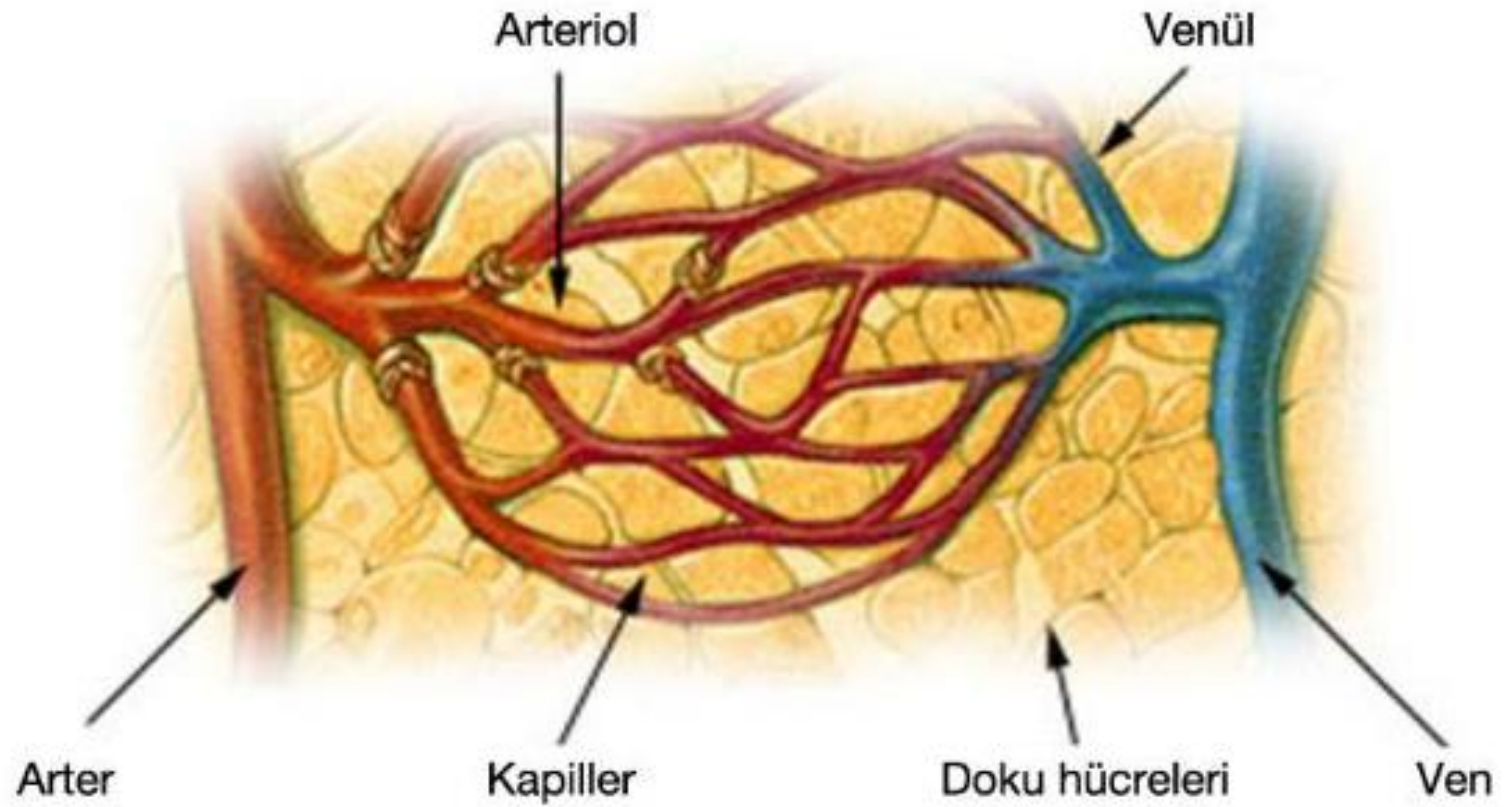
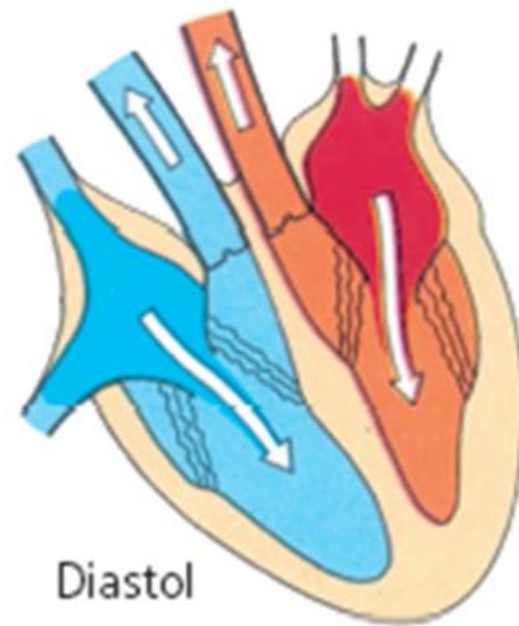
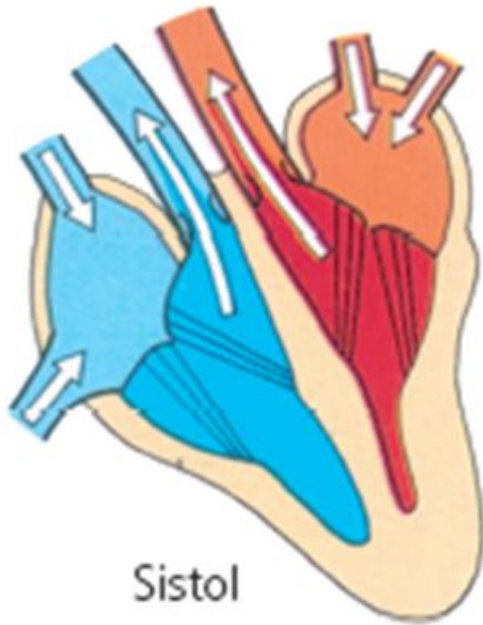


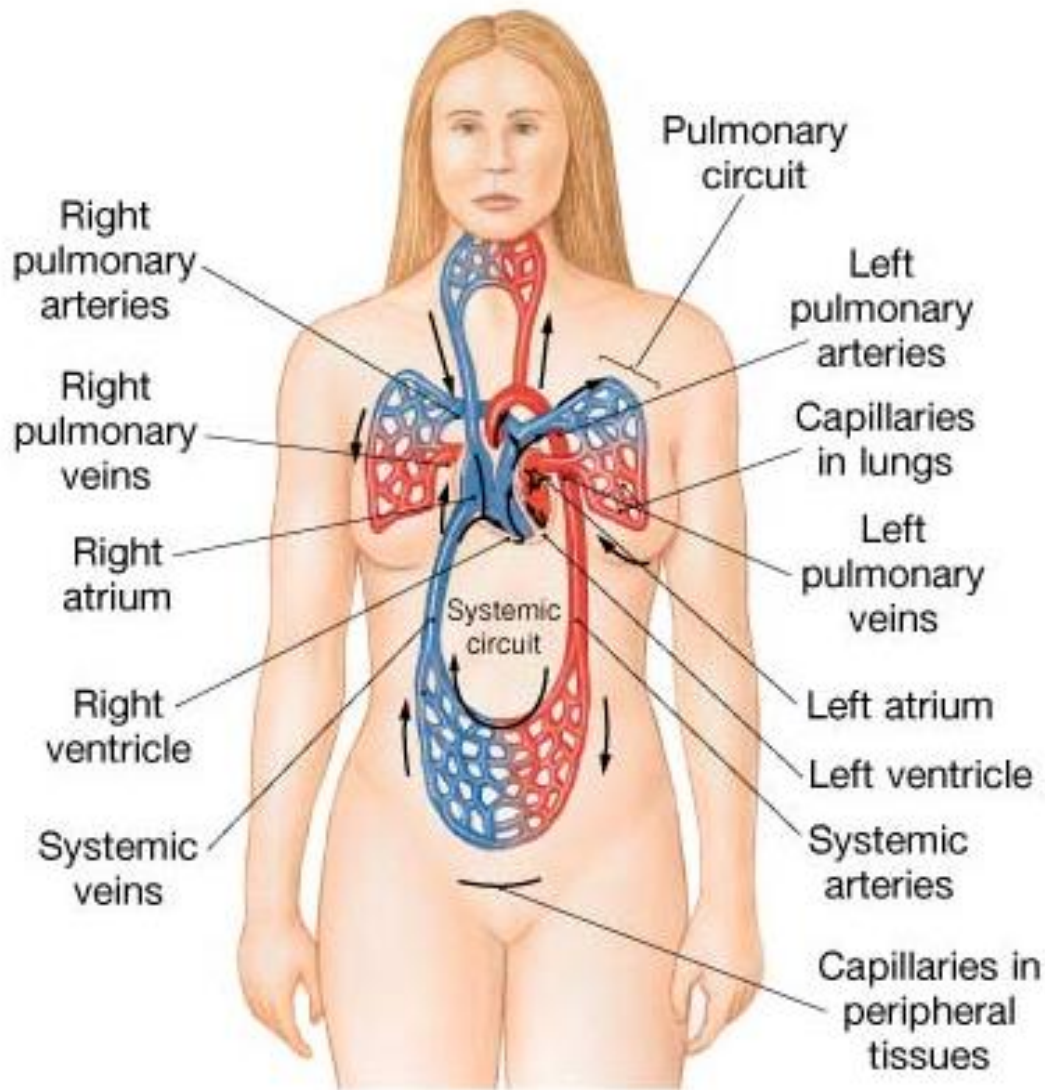
Dolařım Sistemine Giriř ve Kalp

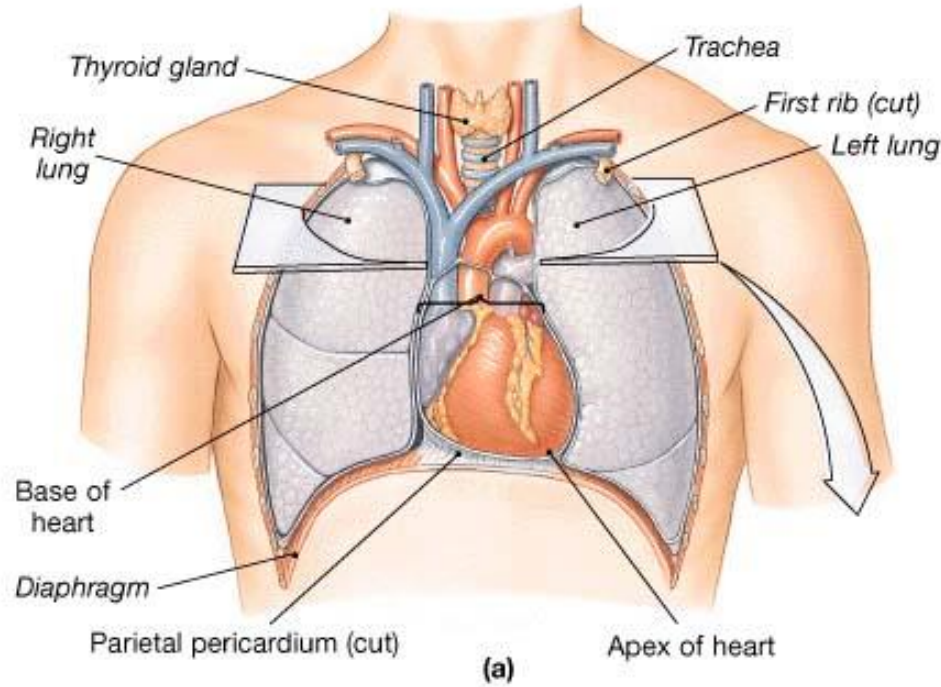
Dr. Emrah ALTUNSOY





Dolaşım Sistemi



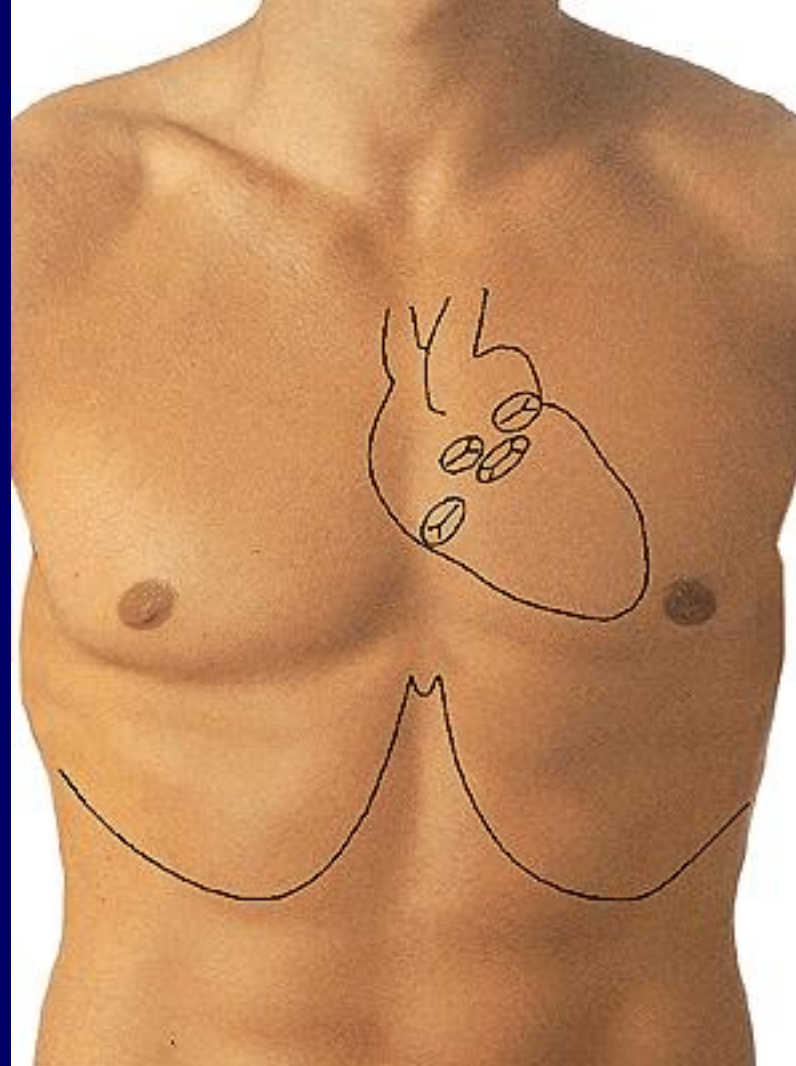


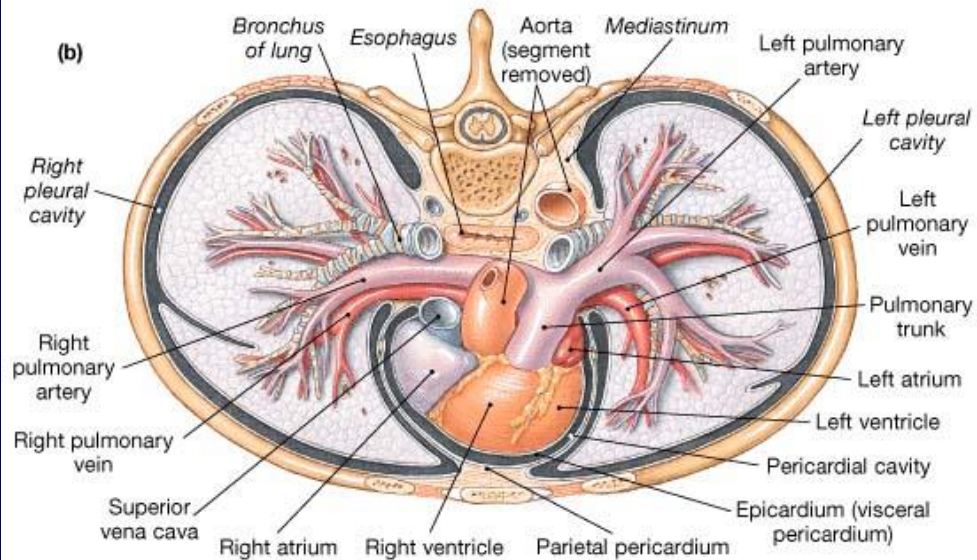
• **FIGURE 20-2** Location of the Heart in the Thoracic Cavity. The heart is situated within the anterior portion of the mediastinum, immediately posterior to the sternum. **(a)** Anterior view of the open chest cavity, showing the position of the heart and major vessels relative to the lungs.

Kalp (Cor)

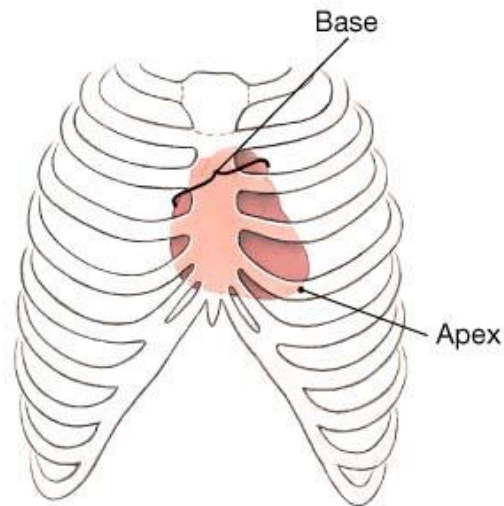
2/3'lük kısmı orta hattın solunda iken 1/3'lük kısmı ise orta hattın sağında yer alır. Dıştan bakıldığında tabanı arkada, tepesi önde ve sola yönelmiş bir koni gibidir

Apex cordis: sol 5 intercostal aralıkla midclavicular hattın kesiştiği noktadadır.



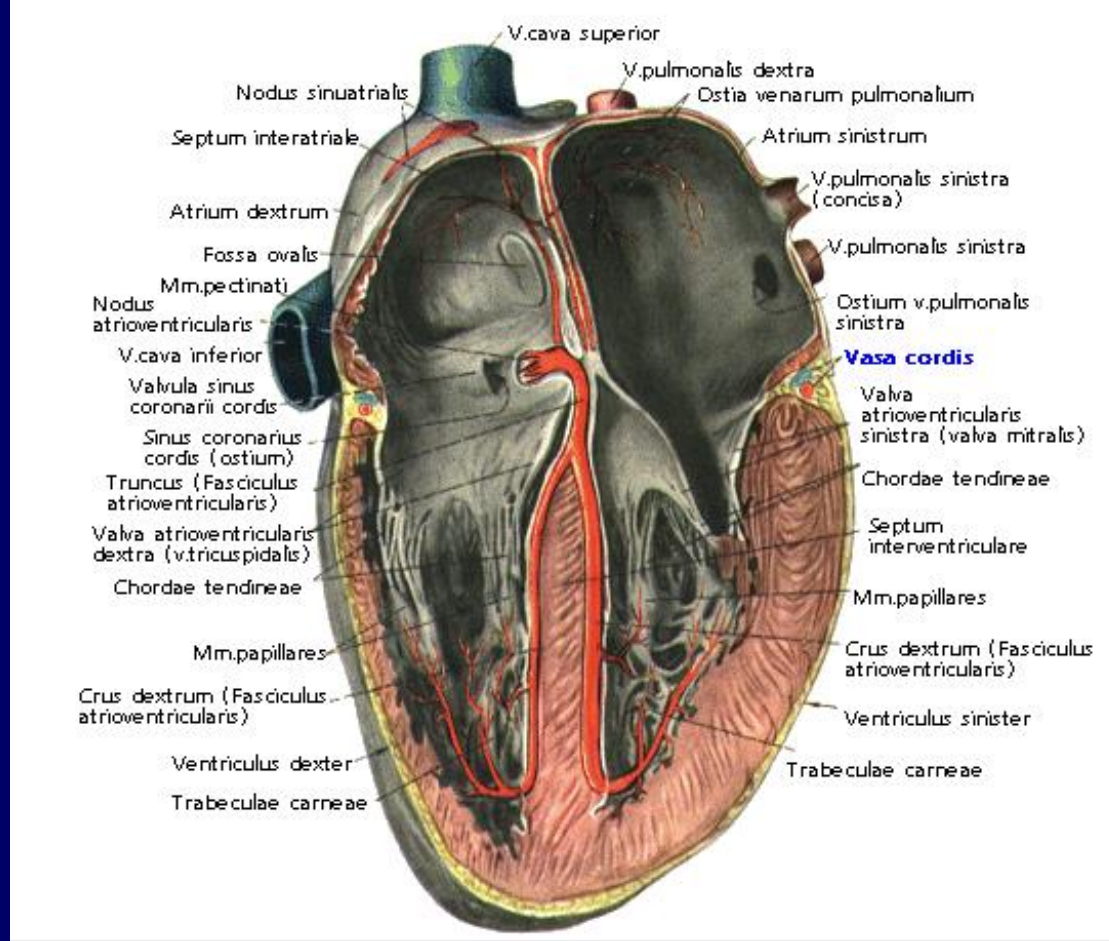


• **FIGURE 20-2** Location of the Heart in the Thoracic Cavity. The heart is situated within the anterior portion of the mediastinum, immediately posterior to the sternum. (b) Sectional view showing the positions of the heart and other organs in the mediastinum.



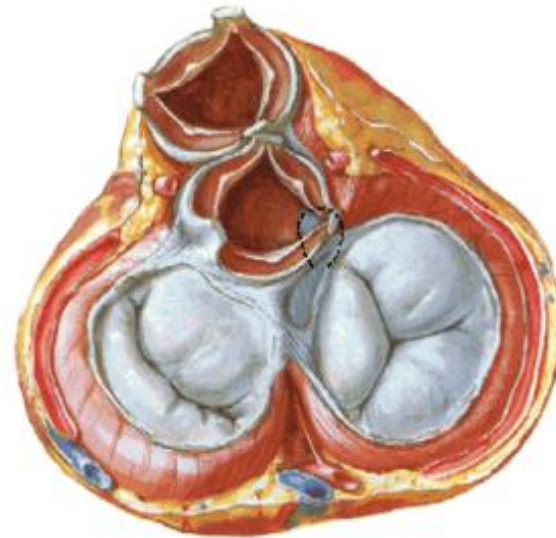
(c) Position of the heart

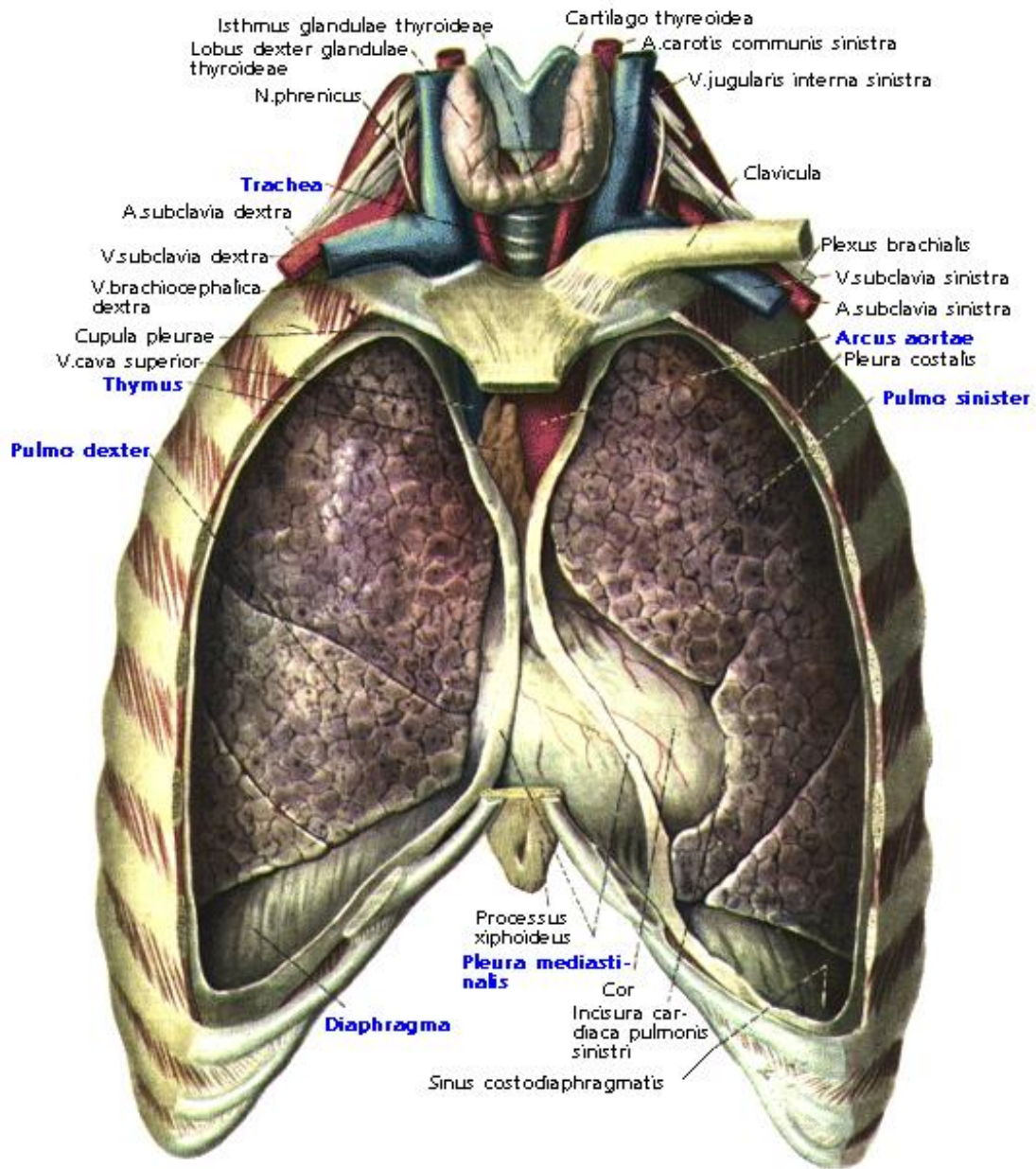
• **FIGURE 20-3** Superficial Anatomy of the Heart. (c) Anterior view of the chest, showing the position of the heart relative to the chest wall.



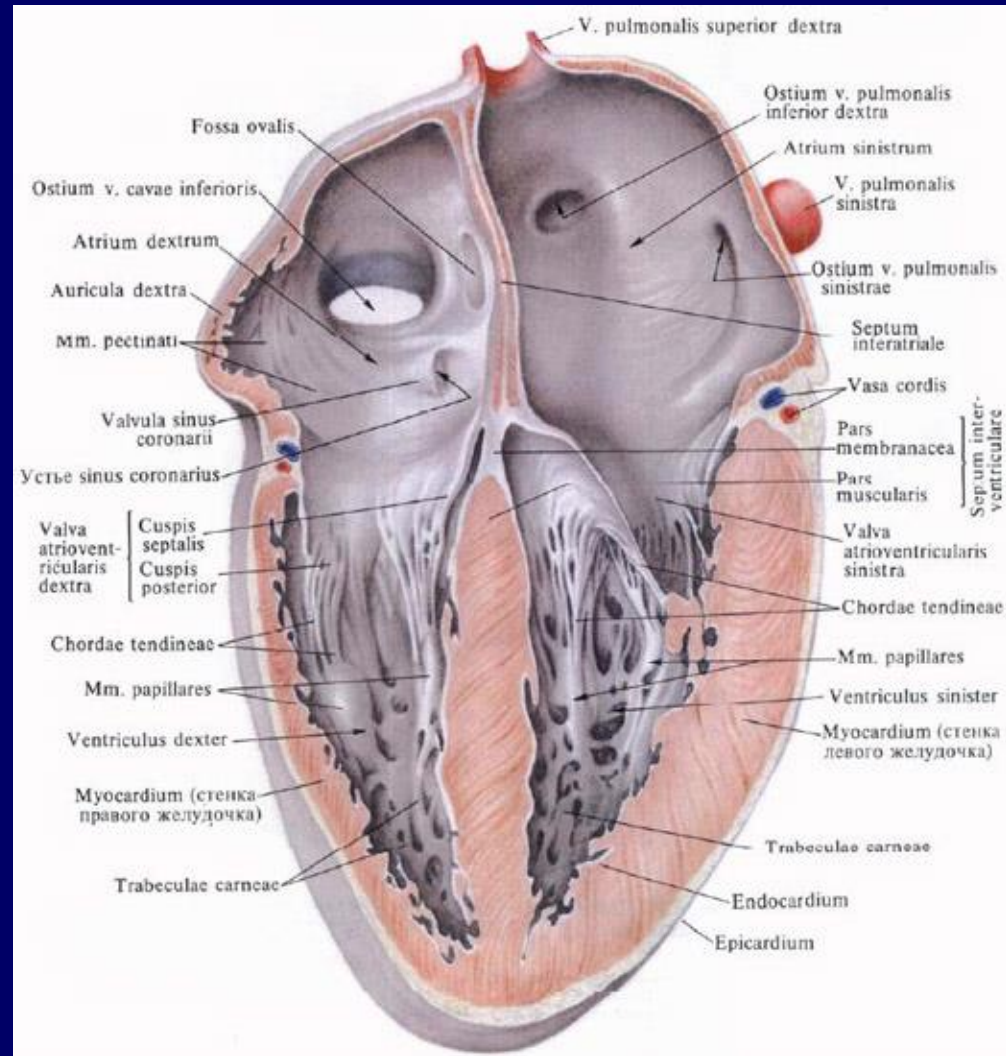
Kalp dört odacıktan meydana gelmiştir. Bu odacıklardan 2 tanesi atrium'lardır (kulakçıklar) ve arka tarafta yerleşirler. Sağlı sollu iki ventricul (karıncık) ise önde bulunur

- Sağda tricuspide (3)
- Solda mitral (2)

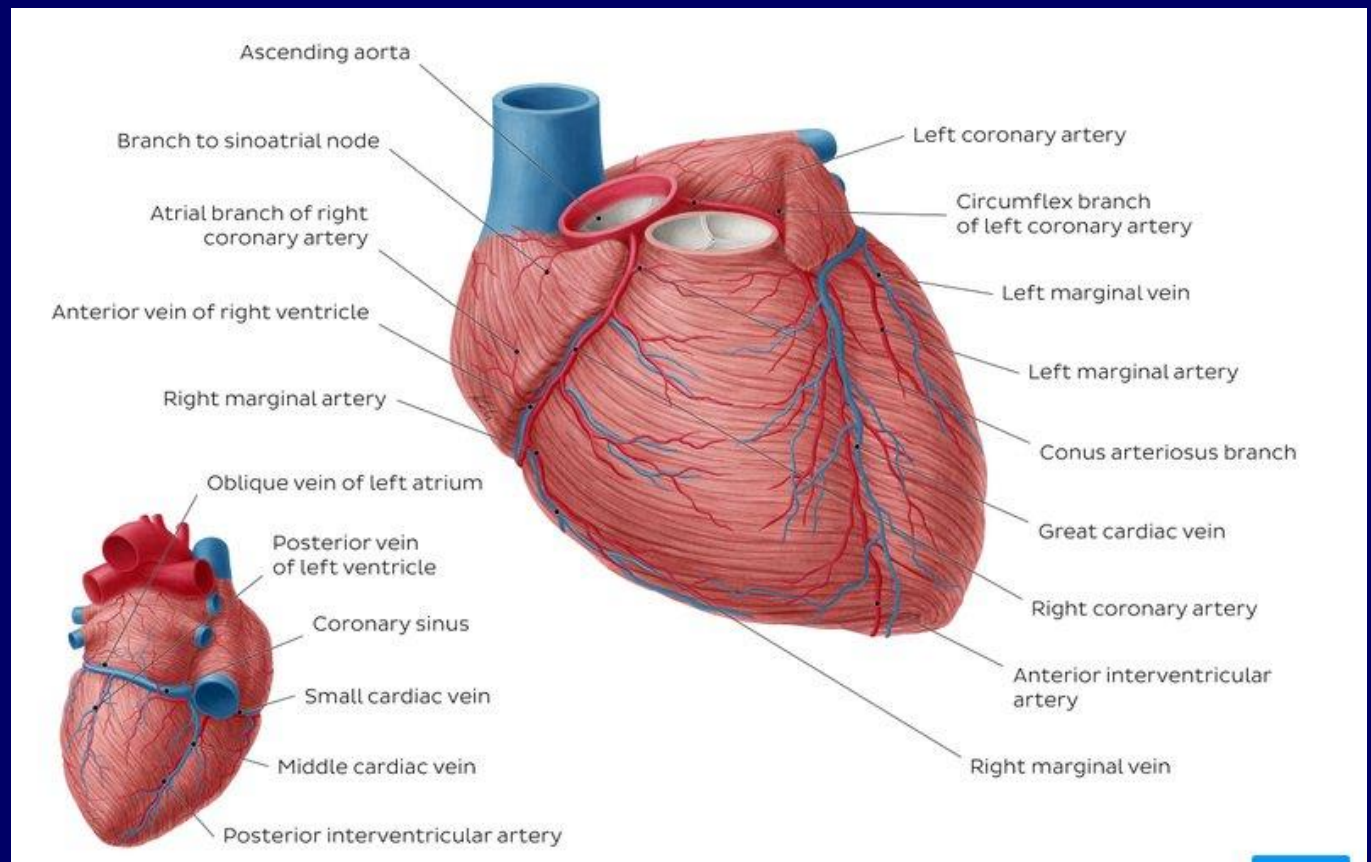




- Atrium dextrum- sinistrum
- Ventriculus dexter- sinister
- Septum interatriale
- Septum interventriculare

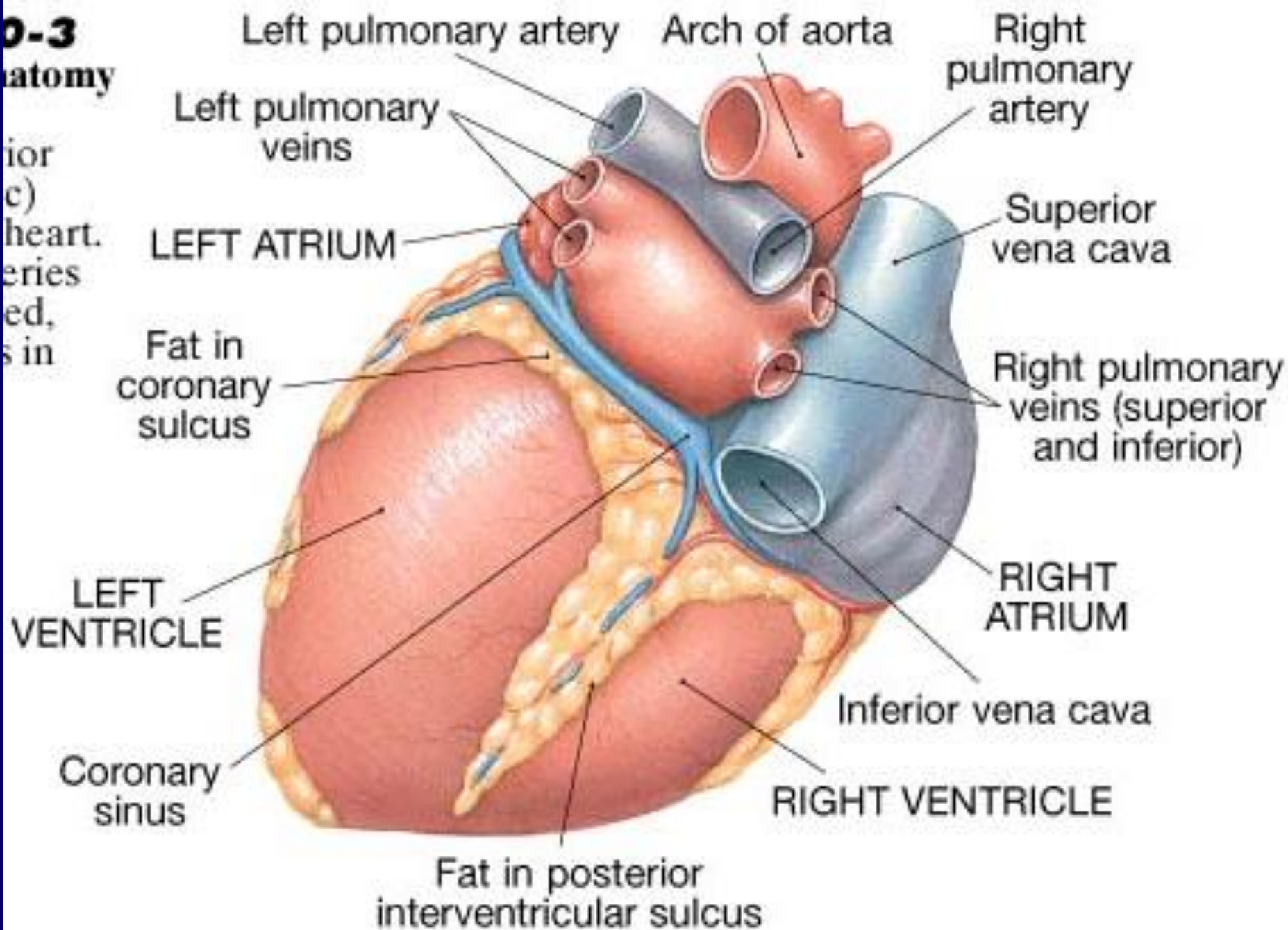


- Sulcus atrioventricularis
- Sulcus interventricularis anterior
- Sulcus interventricularis posterior
- Sulcus coronarius
- Apex cordis (sol ventrikül)



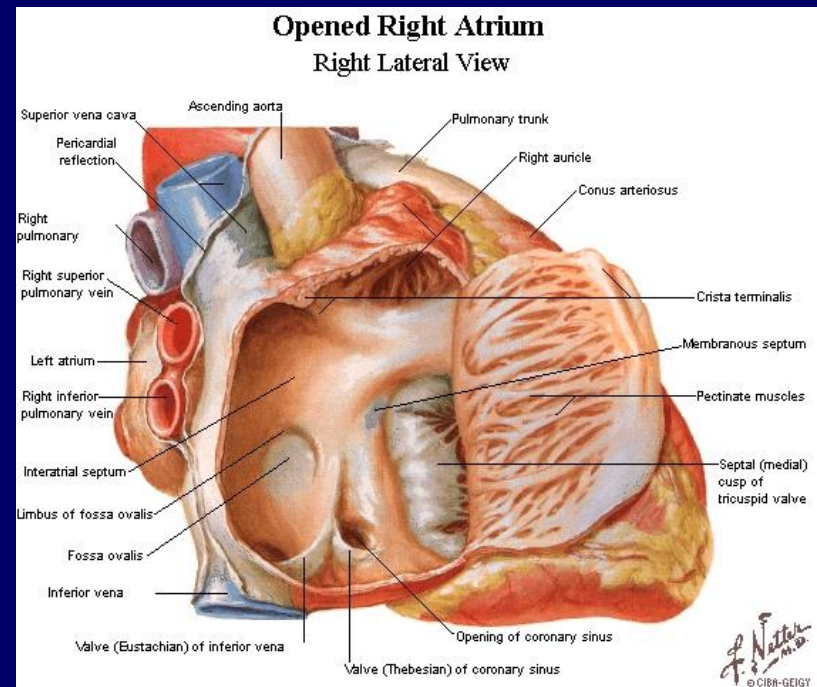
0-3
anatomy

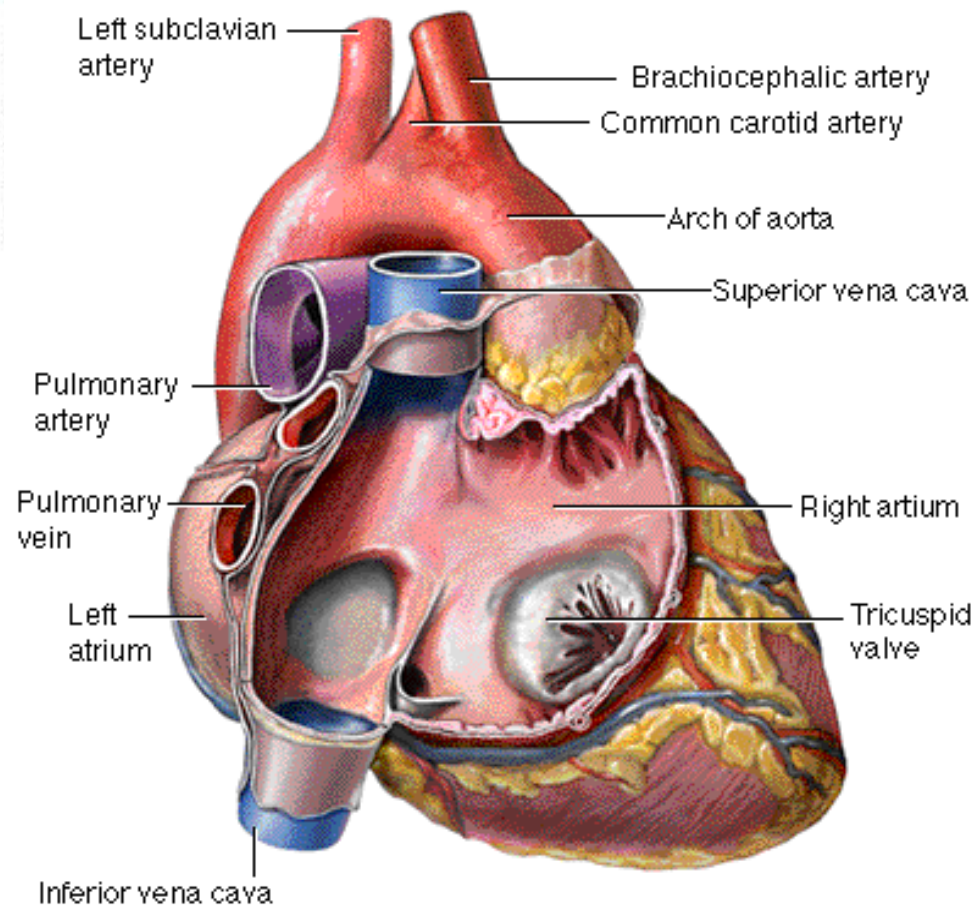
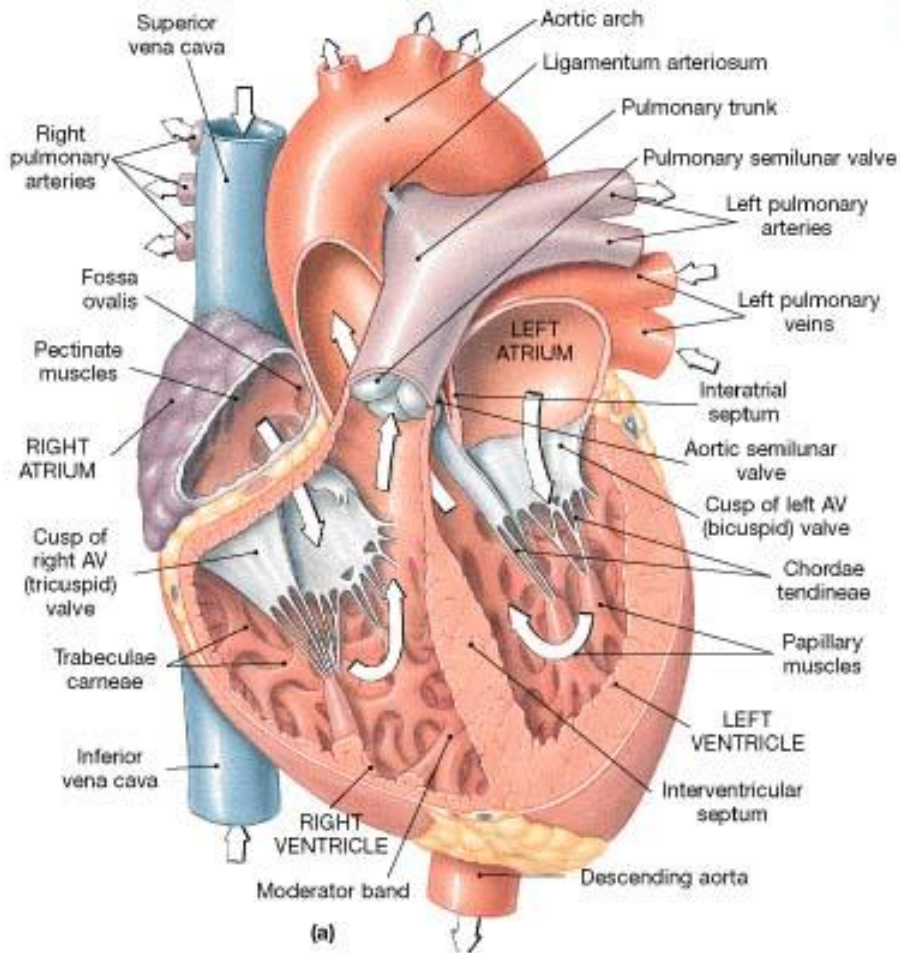
ior
c)
heart.
eries
ed,
s in



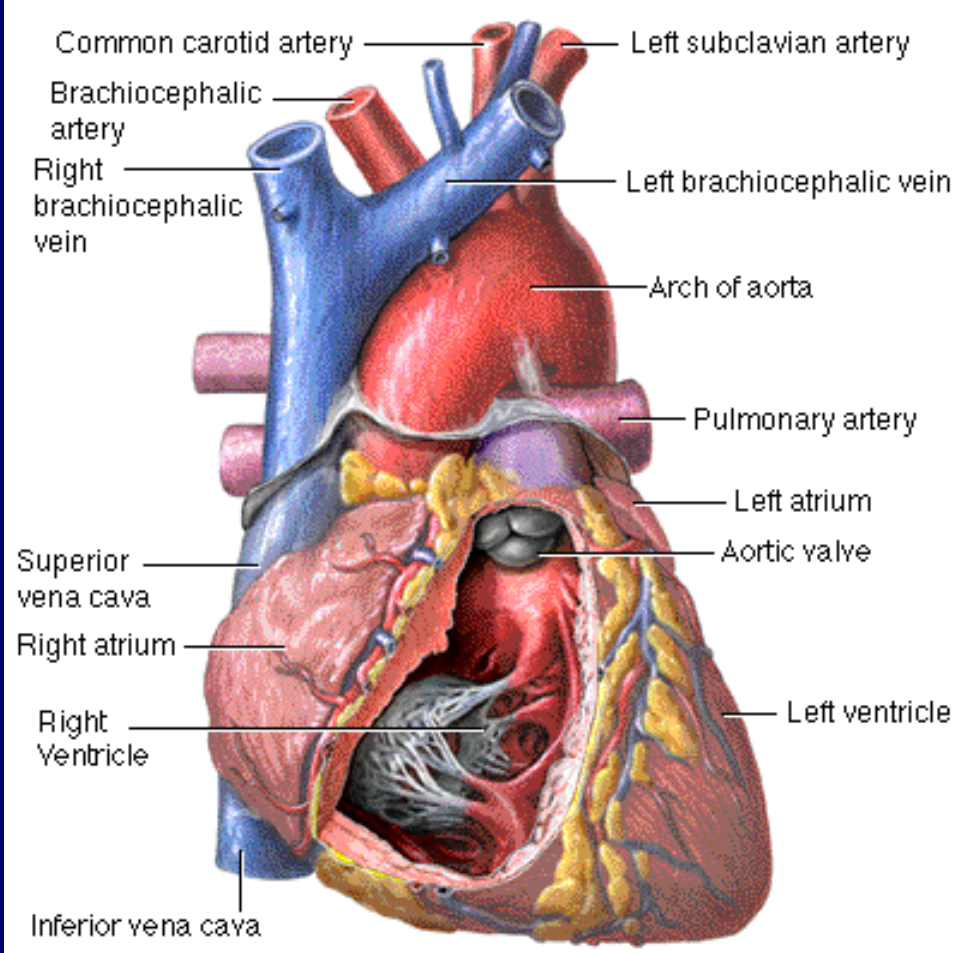
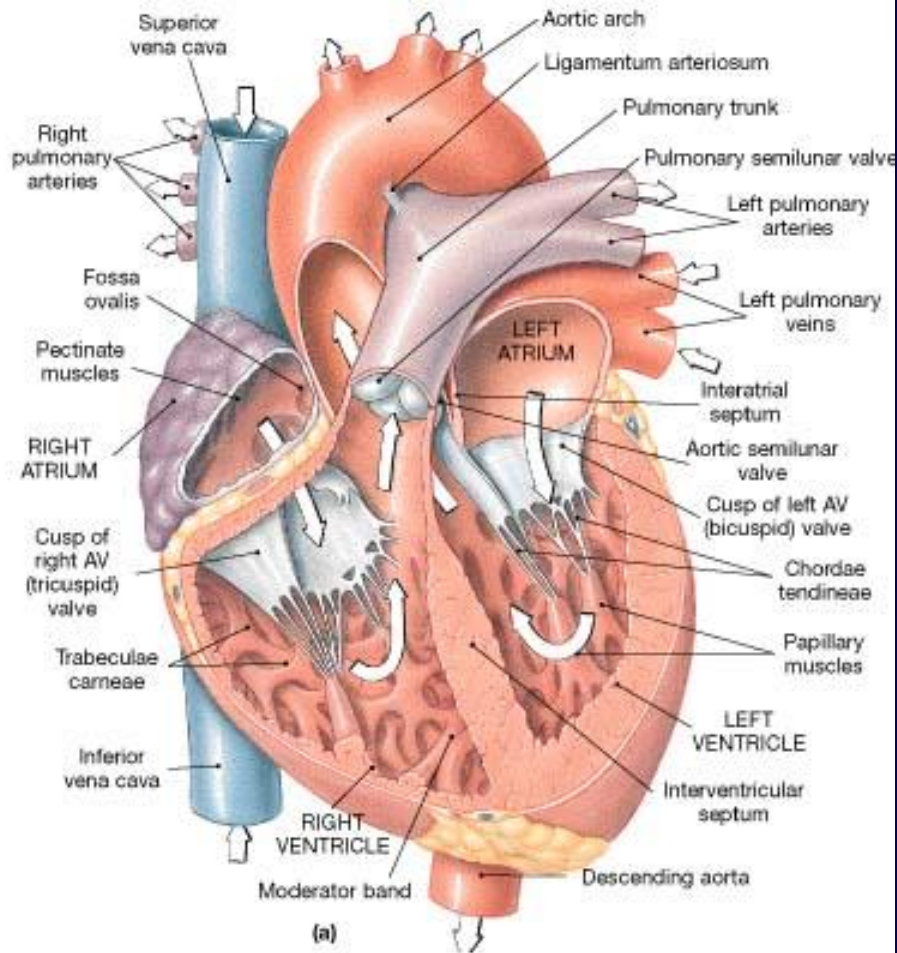
Atrium Dextrum:

auricula dextra, ostium
atrioventriculare dextrum,
septum interatriale, fossa
ovalis, foramen ovale, v.
cavae superior, inferior, m.
pectinati, valva
atrioventricularis dextra
(tricuspidalis)

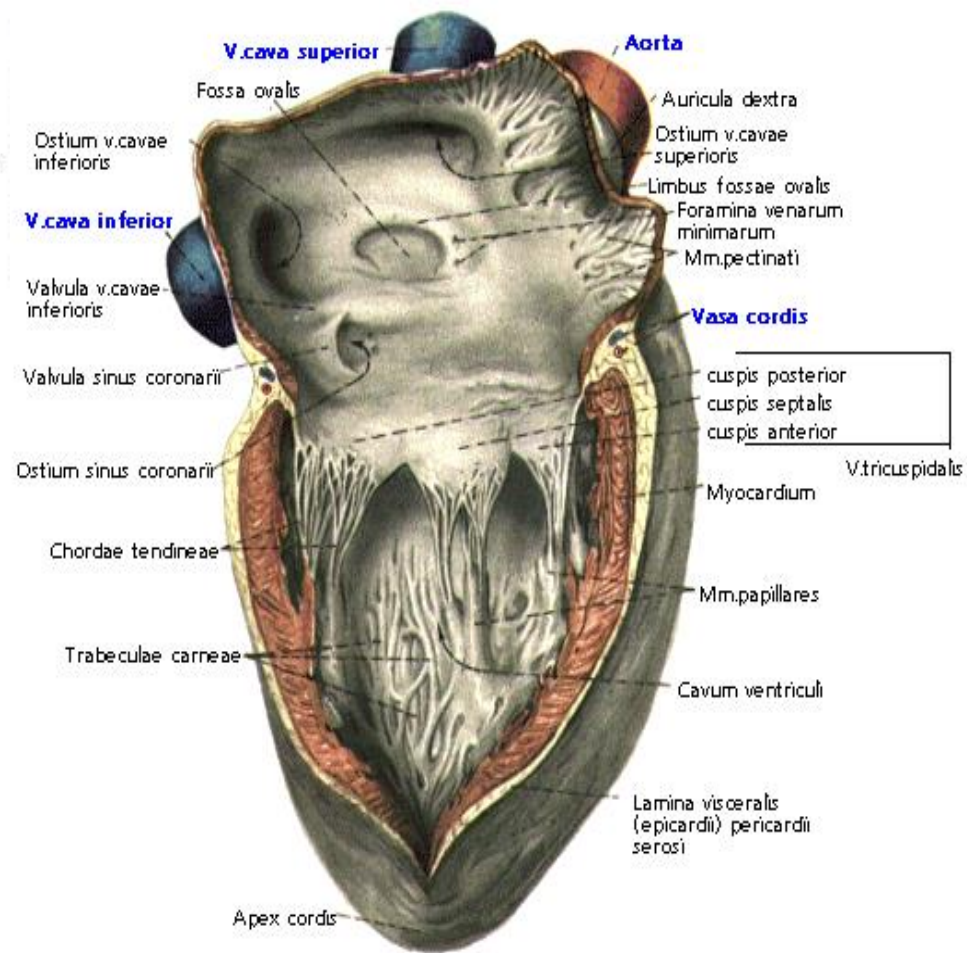
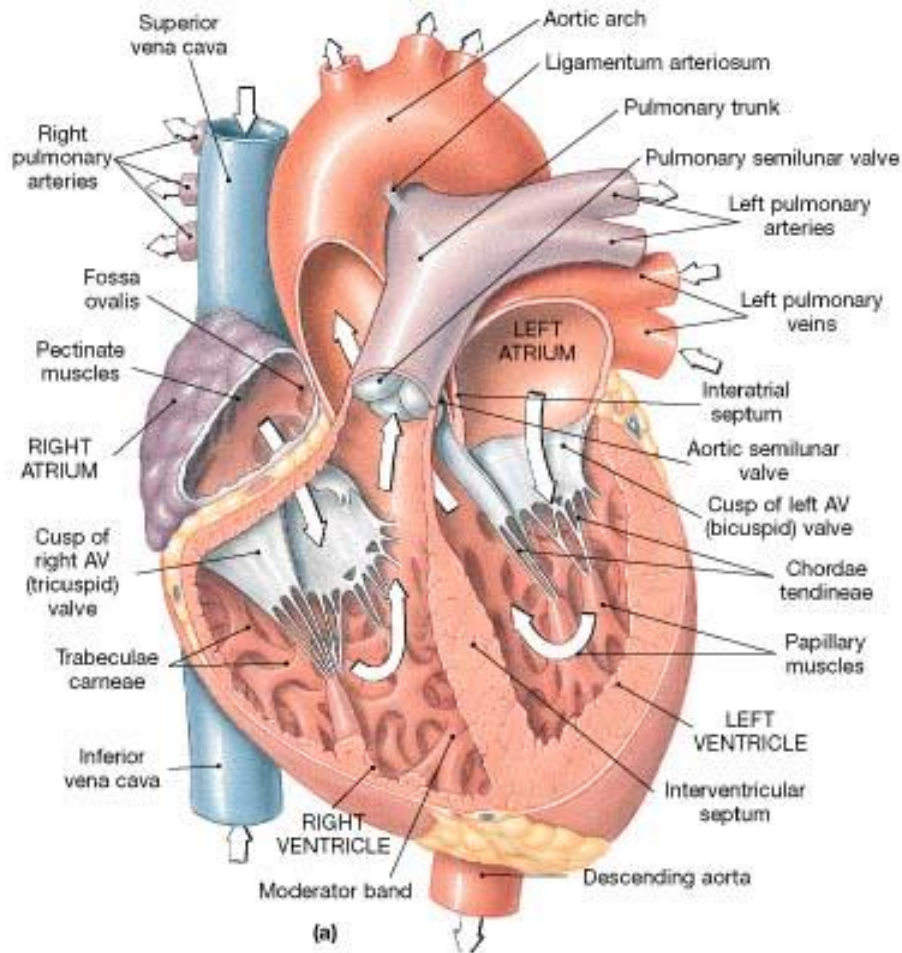




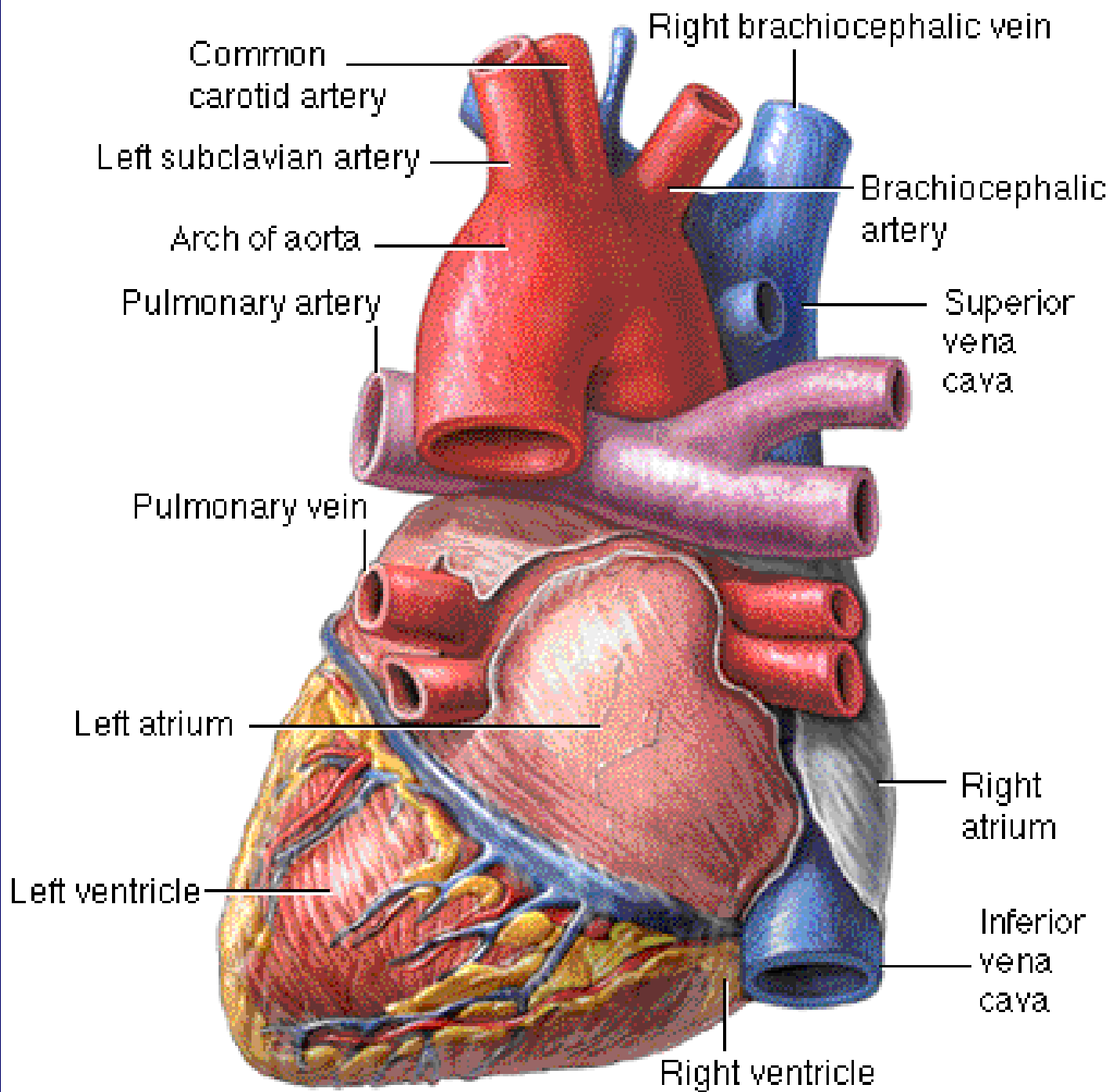
Atrium Dextrum: auricula dextra, ostium atrioventriculare dextrum, septum interatriale, fossa ovalis, foramen ovale, v. caeve superior, inferior, m. pectinati, valva atrioventricularis dextra (tricuspidalis)

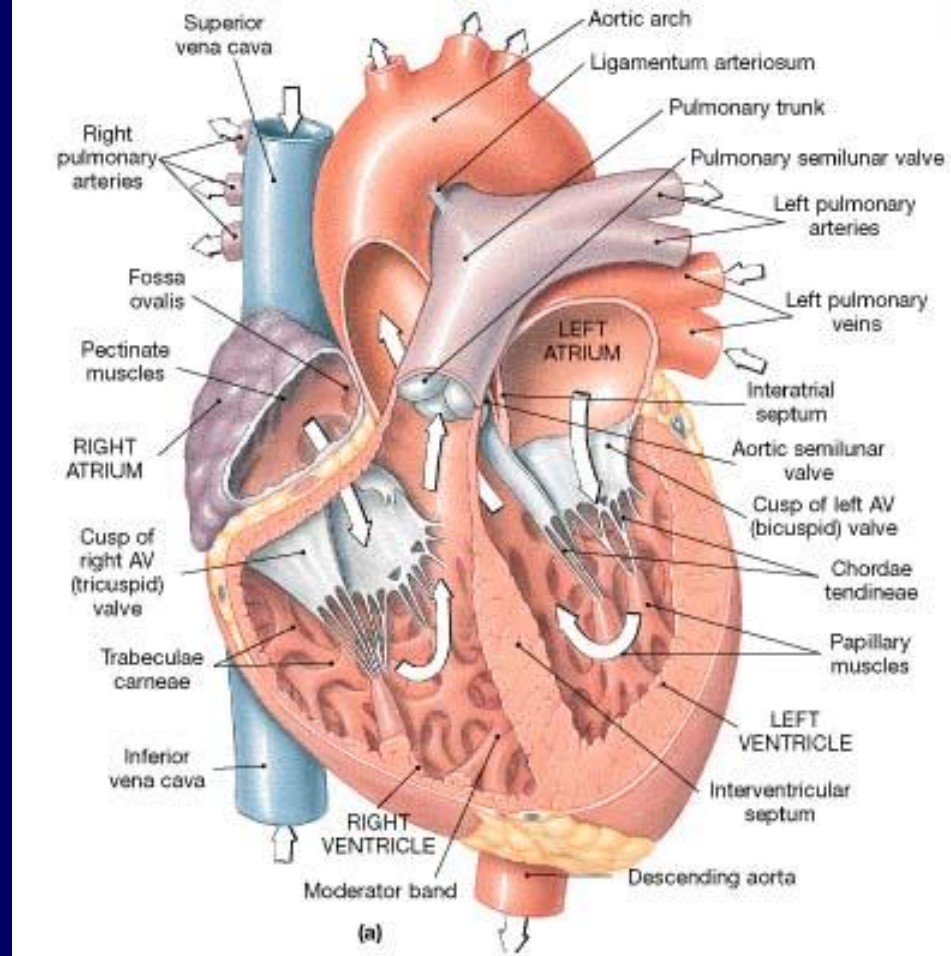


Ventriculus dexter:, ostium atrioventriculare dextrum, valva tricuspidalis, septum interventriculare, truncus pulmonaris, ostium trunci pulmonalis, valva trunci pulmonaris, valvula semilunaris, m. papillaris, trabecula carnea, trabecula septomarginalis (moderator band)

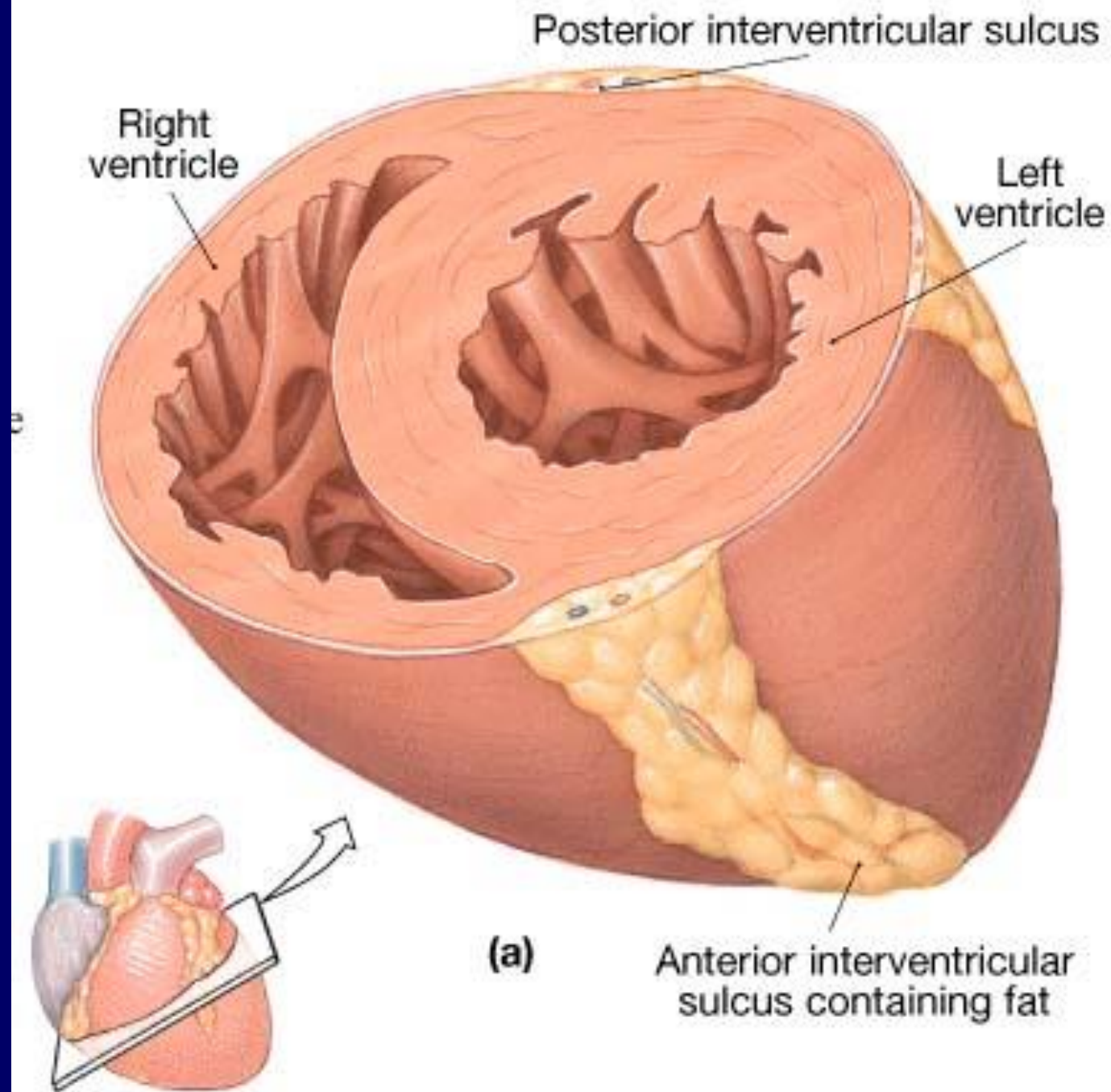


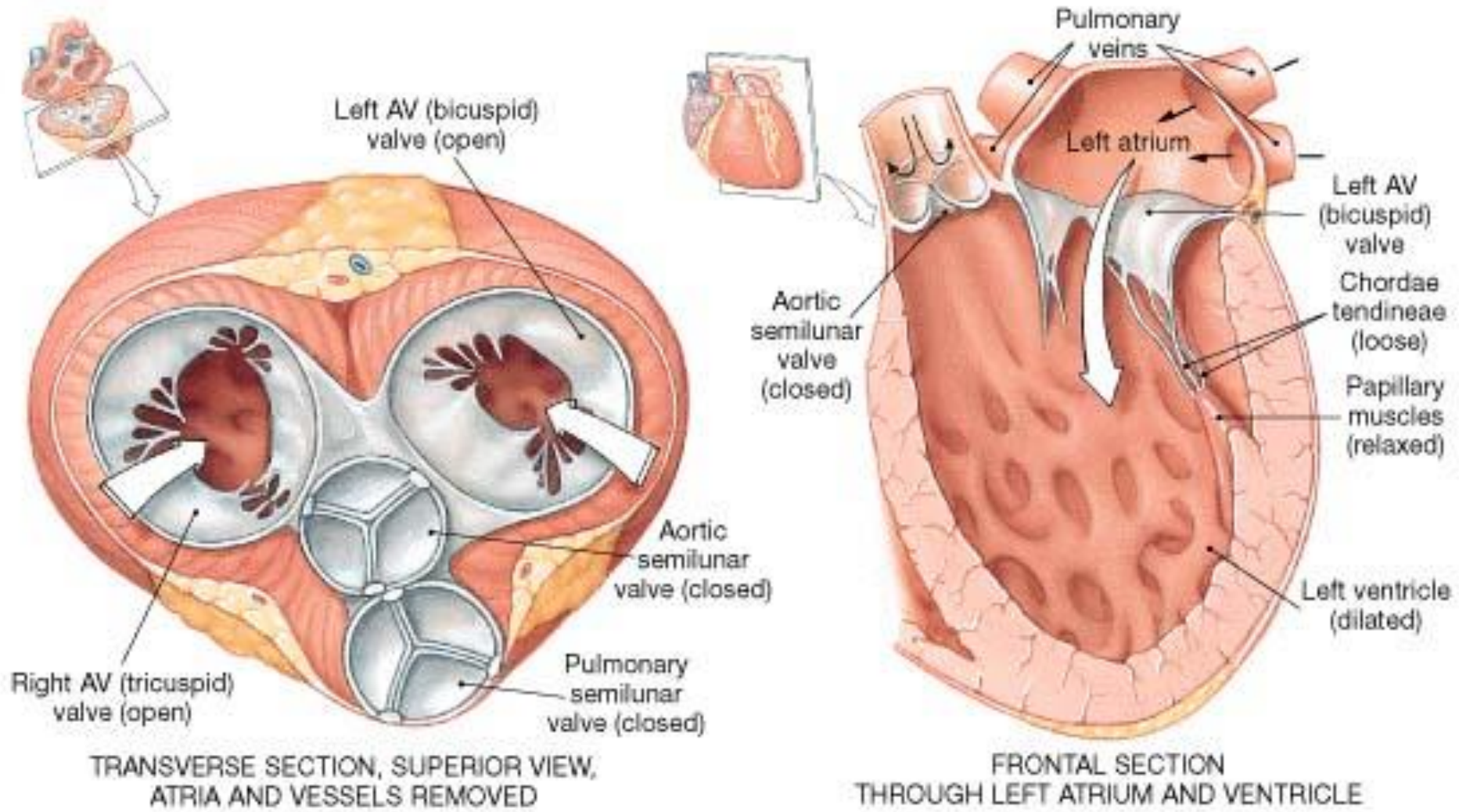
Atrium Sinistrum: auricula sinistra, ostium atrioventriculare sinistrum, septum interatriale, fossa ovalis, vv. pulmonales, m. pectinati, valva atrioventricularis sinistra (mitralis)



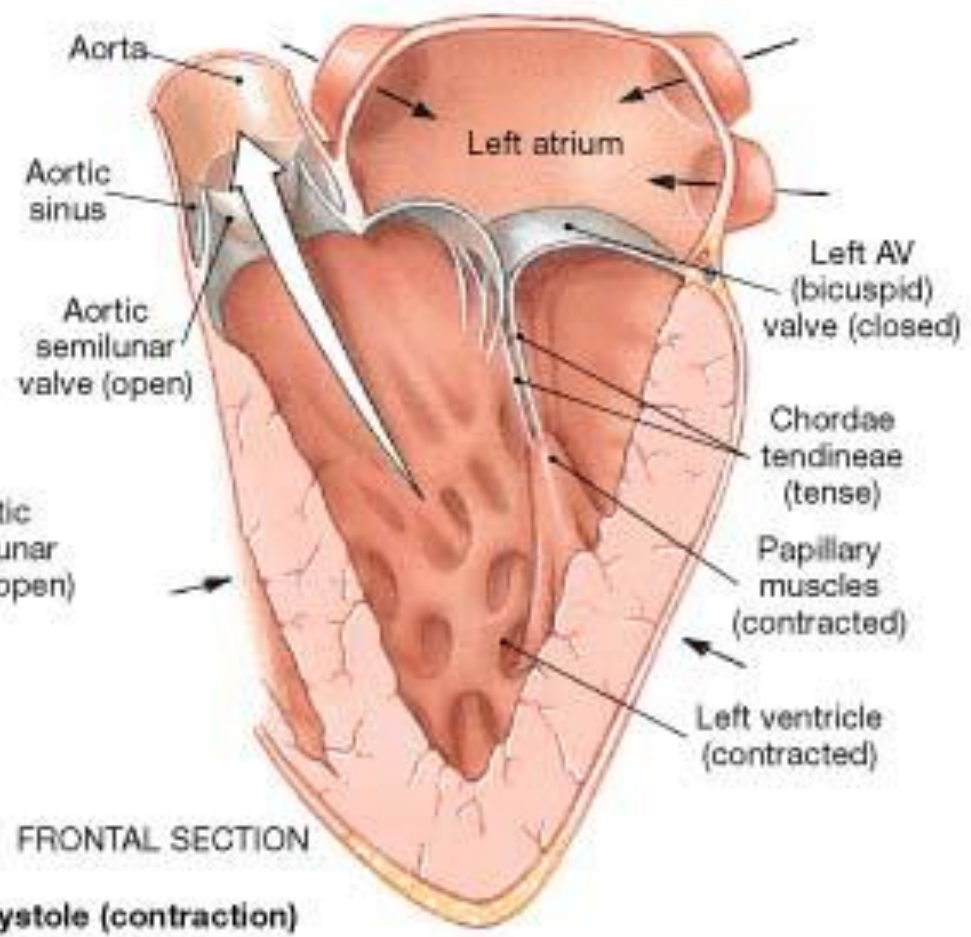
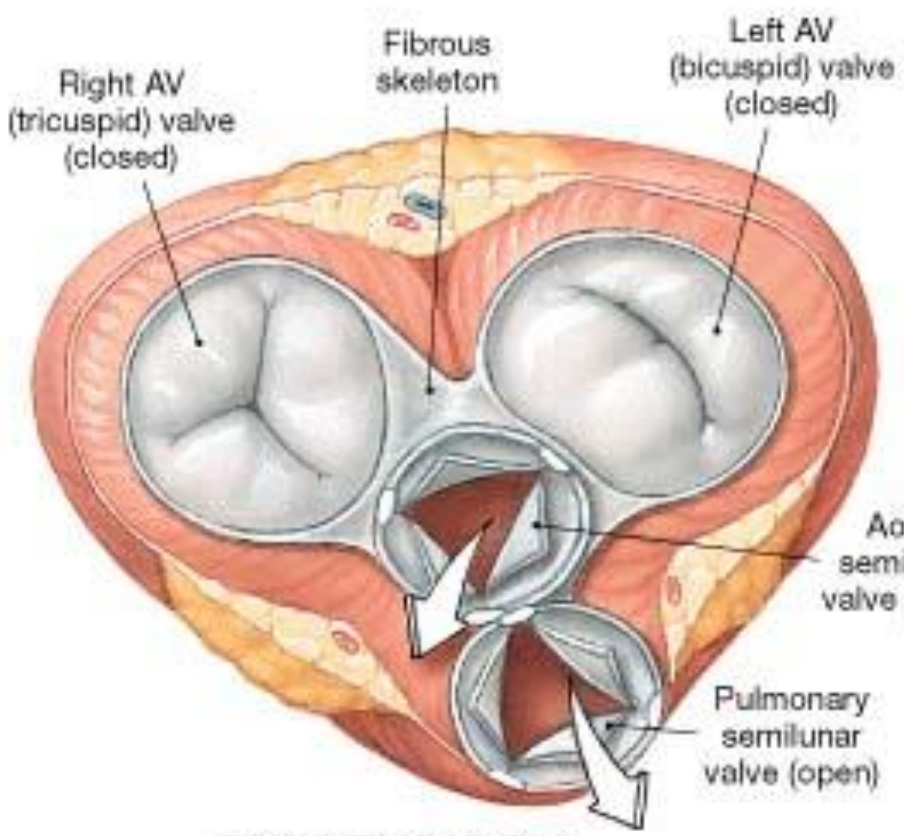


Ventriculus sinister: ostium atrioventriculare sinistrum, septum interventriculare, aorta, ostium aorta, valva aortici, valvula semilunaris, m. papillaris, trabecula carnea, valva mitralis





(a) Ventricular diastole (relaxation)



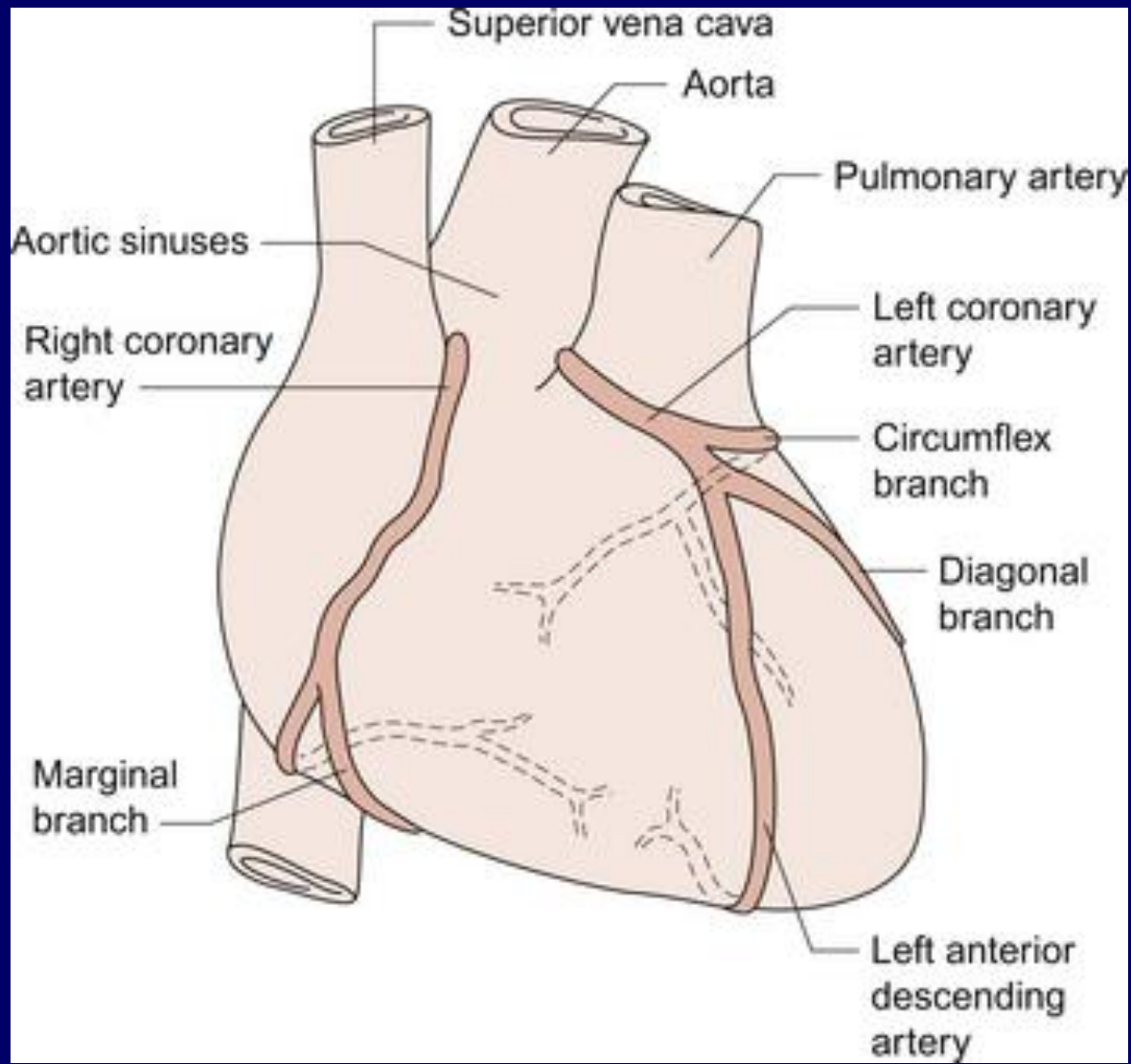
Kalbin damarları

Kalbin arterleri

1. Arteria coronaria dextra
 - ramus marginalis dexter
 - ramus interventricularis posterior
2. Arteria coronaria sinistra
 - ramus circumflexus
 - ramus interventricularis anterior
 - ramus marginalis sinister

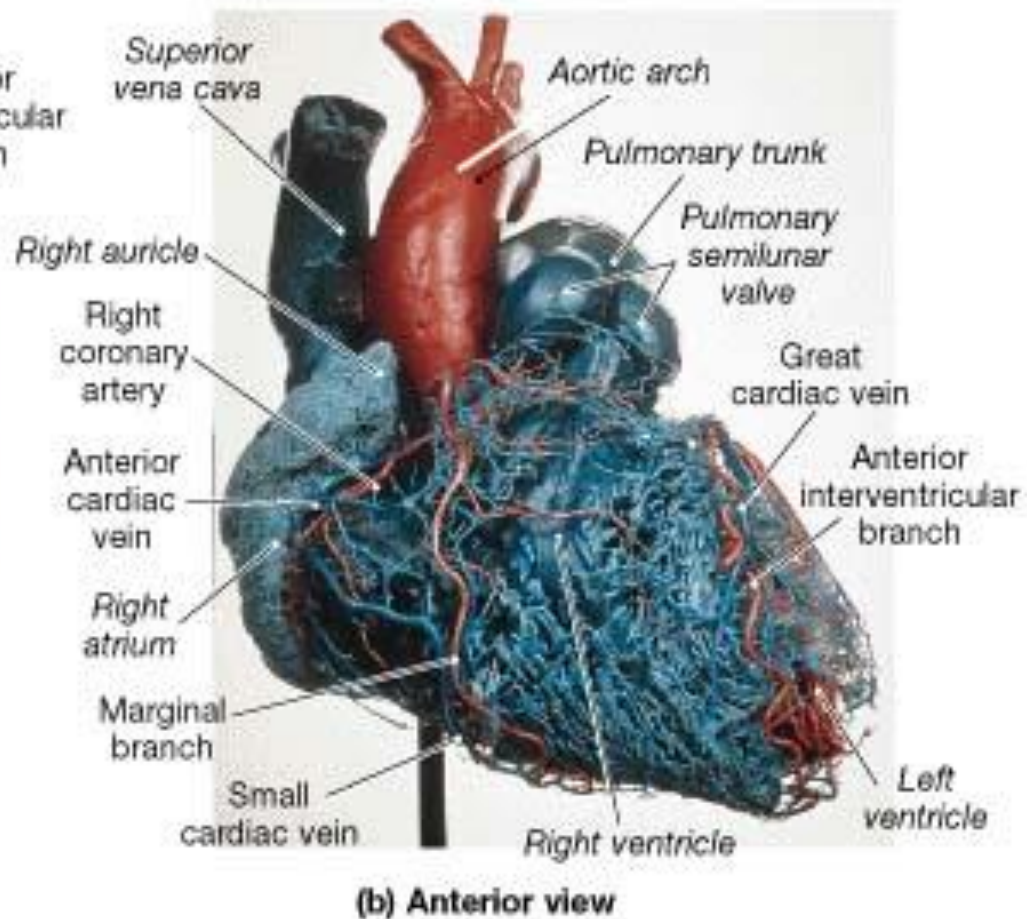
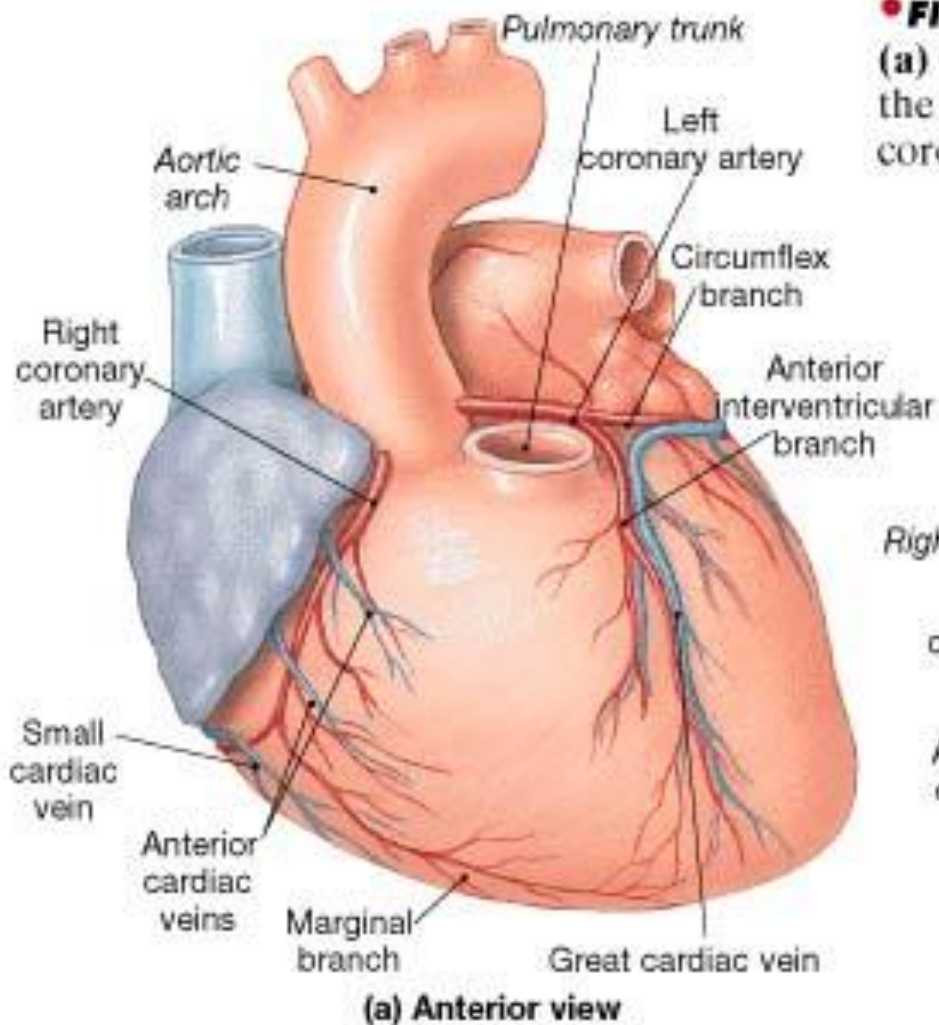
Kalbin venleri

1. Vena cordis magna
 2. Vena cordis media
 3. Vena cordis parva
- Sinus coronarius



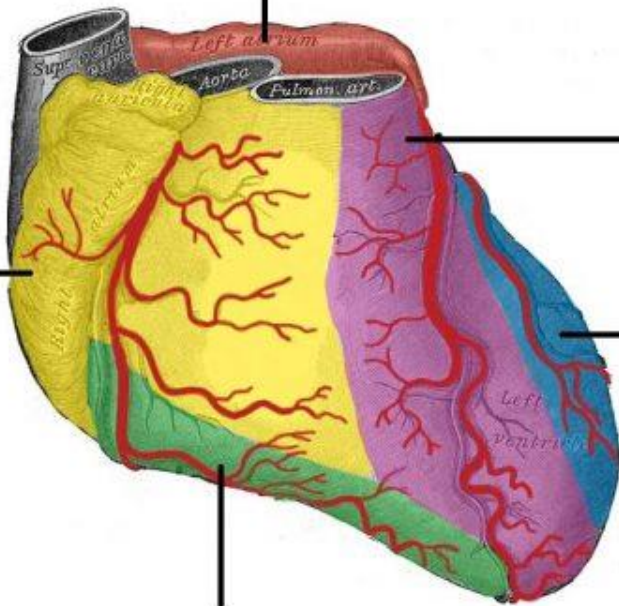
• **FIGURE 20-8 Coronary Circulation.**

(a) Coronary vessels supplying the anterior surface of the heart. **(b)** Anterior view of a corrosion cast of the coronary circulation.



Left Circumflex Artery

Supplies the left atrium and left ventricle



Left Anterior Descending Artery

Supplies the right ventricle, left ventricle and interventricular septum

Right Coronary Artery

Supplies the right atrium and the right ventricle

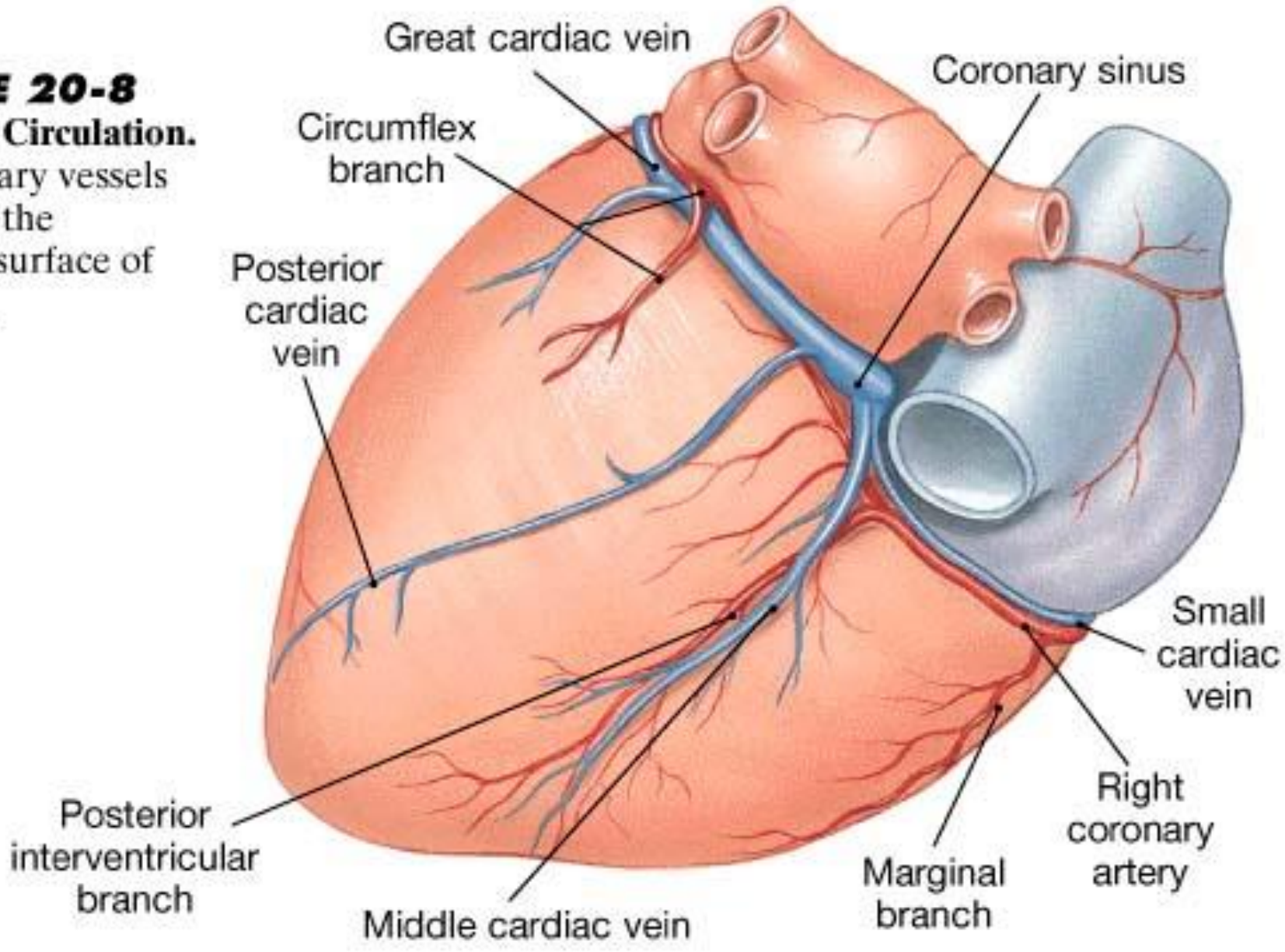
Left Marginal Artery

Supplies the left ventricle

Right Marginal Artery

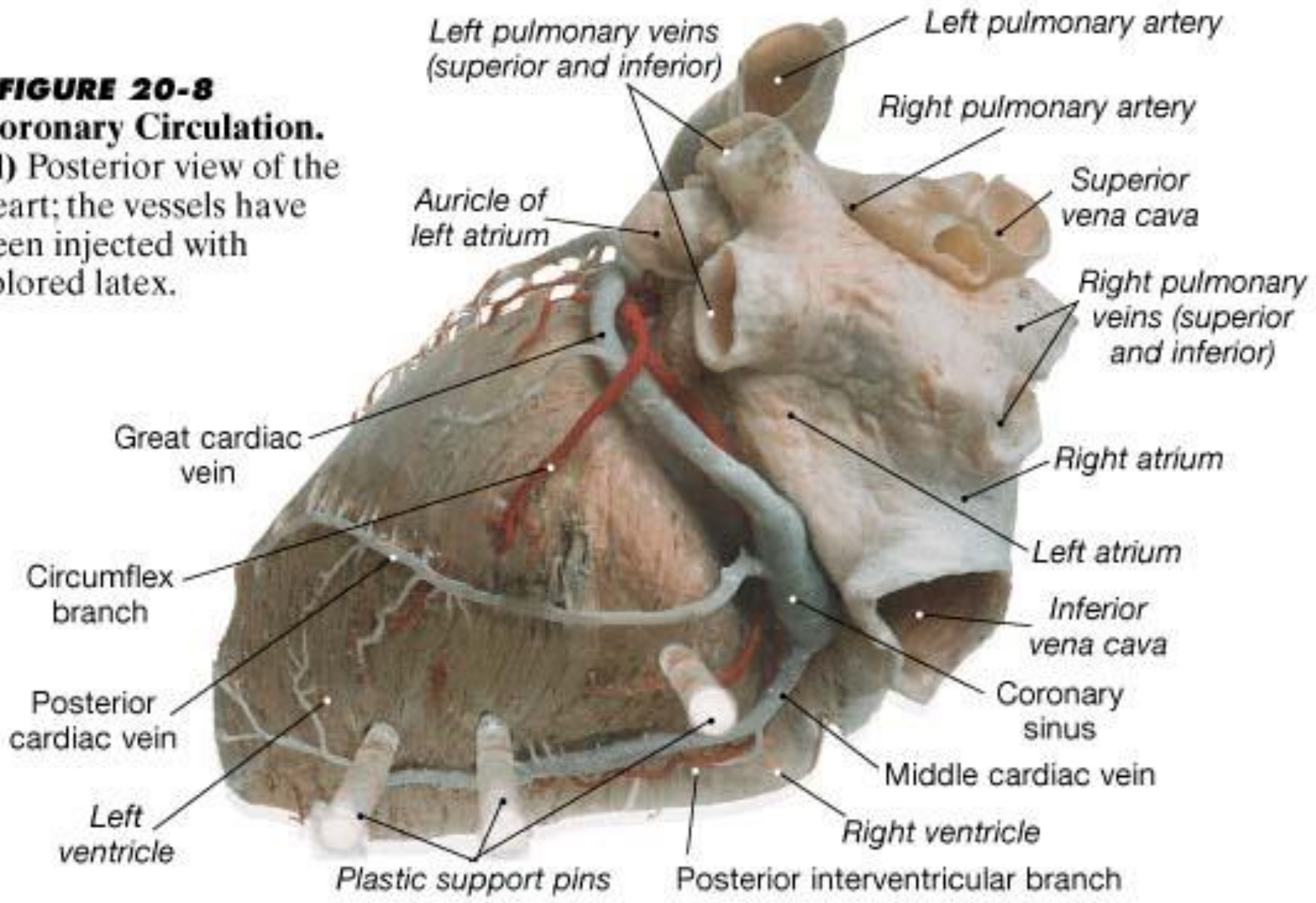
Supplies the right ventricle and the apex

• FIGURE 20-8
Coronary Circulation.
(c) Coronary vessels
supplying the
posterior surface of
the heart.



(c) Posterior view

FIGURE 20-8
Coronary Circulation.
(d) Posterior view of the heart; the vessels have been injected with colored latex.



(d) Posterior view

Kalbin ileti sistemi

Nodus sinoatrialis (SA nodülü, Keith-Flack nodülü)

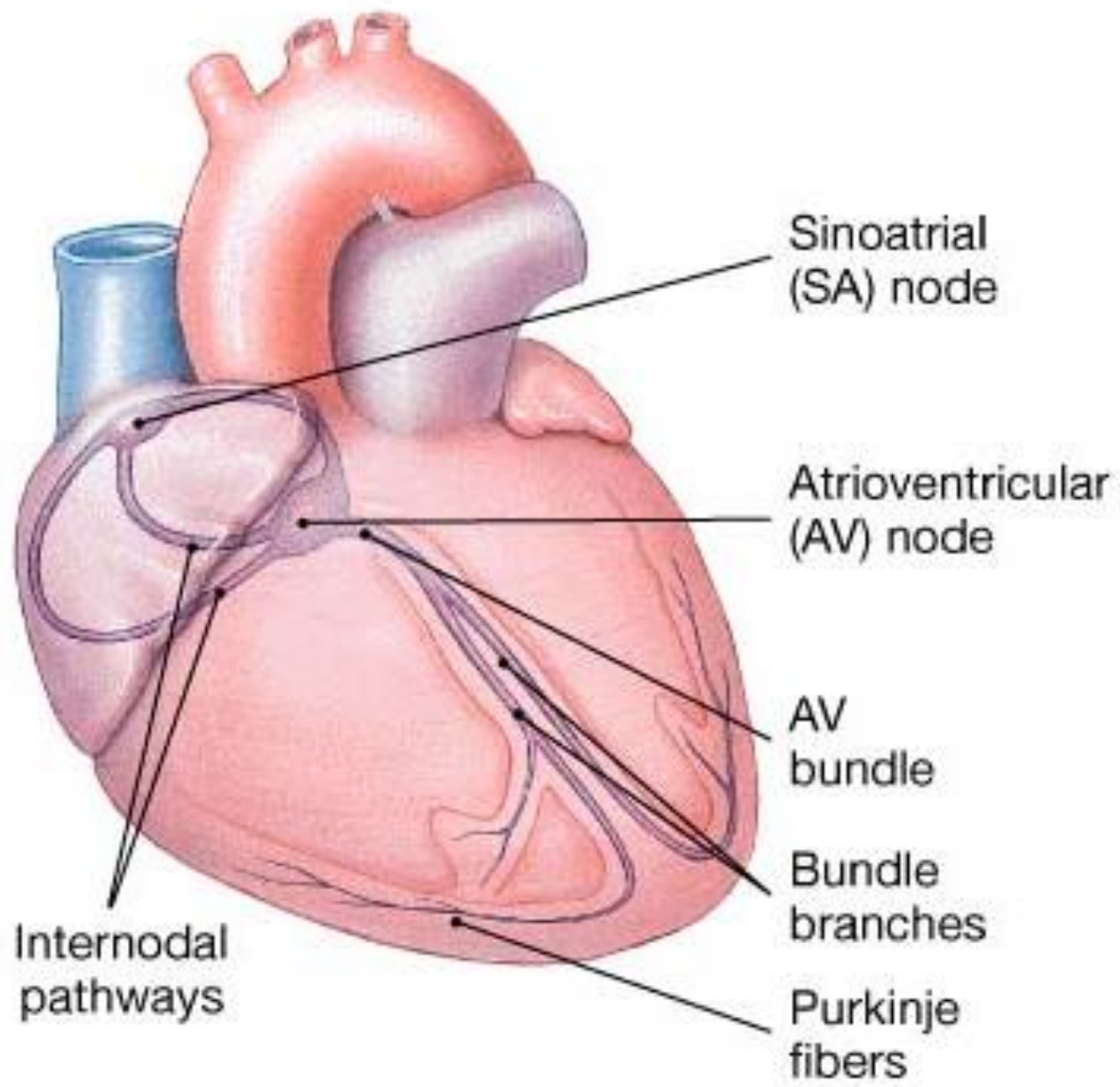
Nodus atrioventricularis (AV nodülü, Aschoff – Tawara nodülü)

Fasciculus atrioventricularis (His huzmesi)

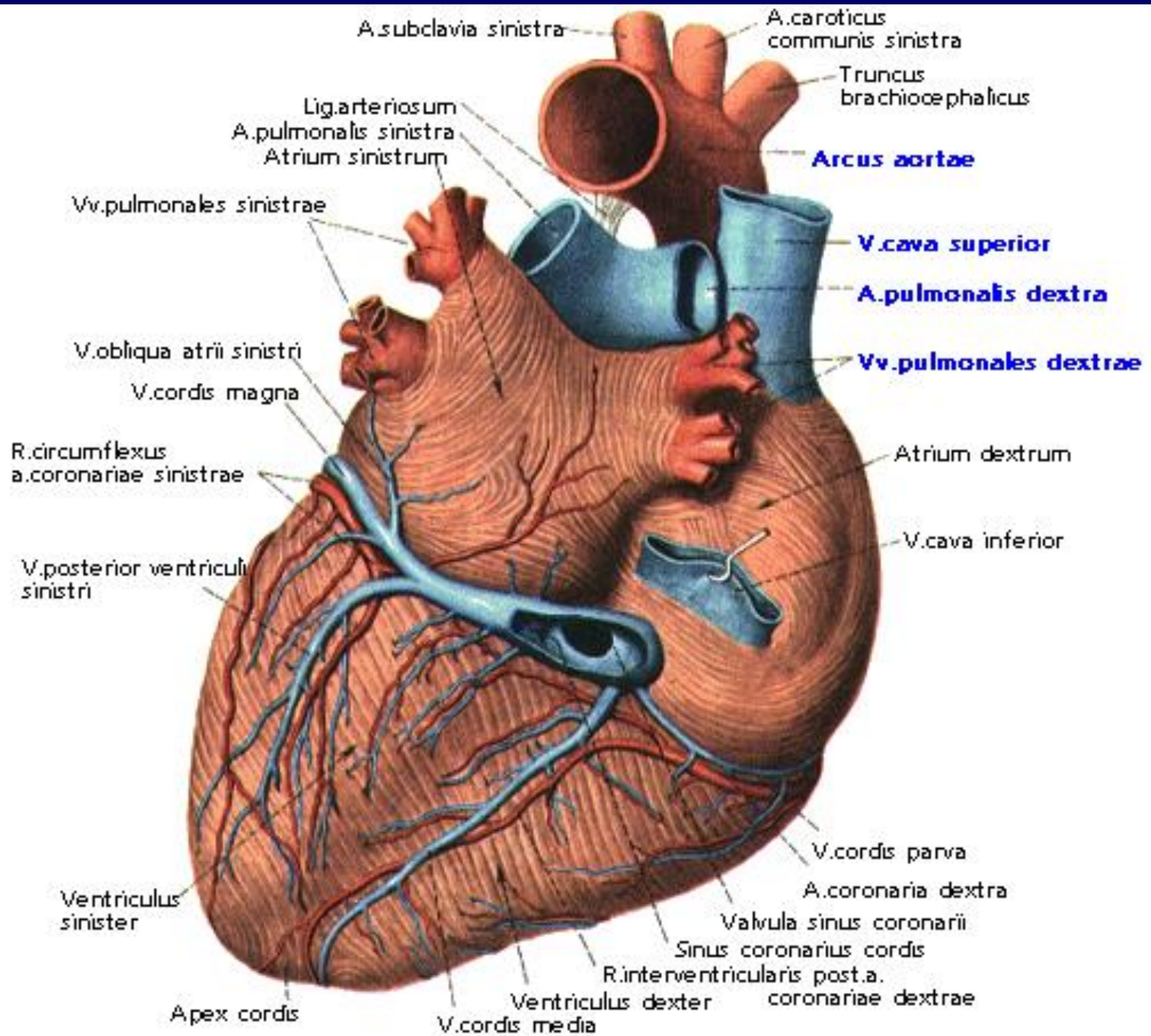
Crus dextrum

Crus sinistrum

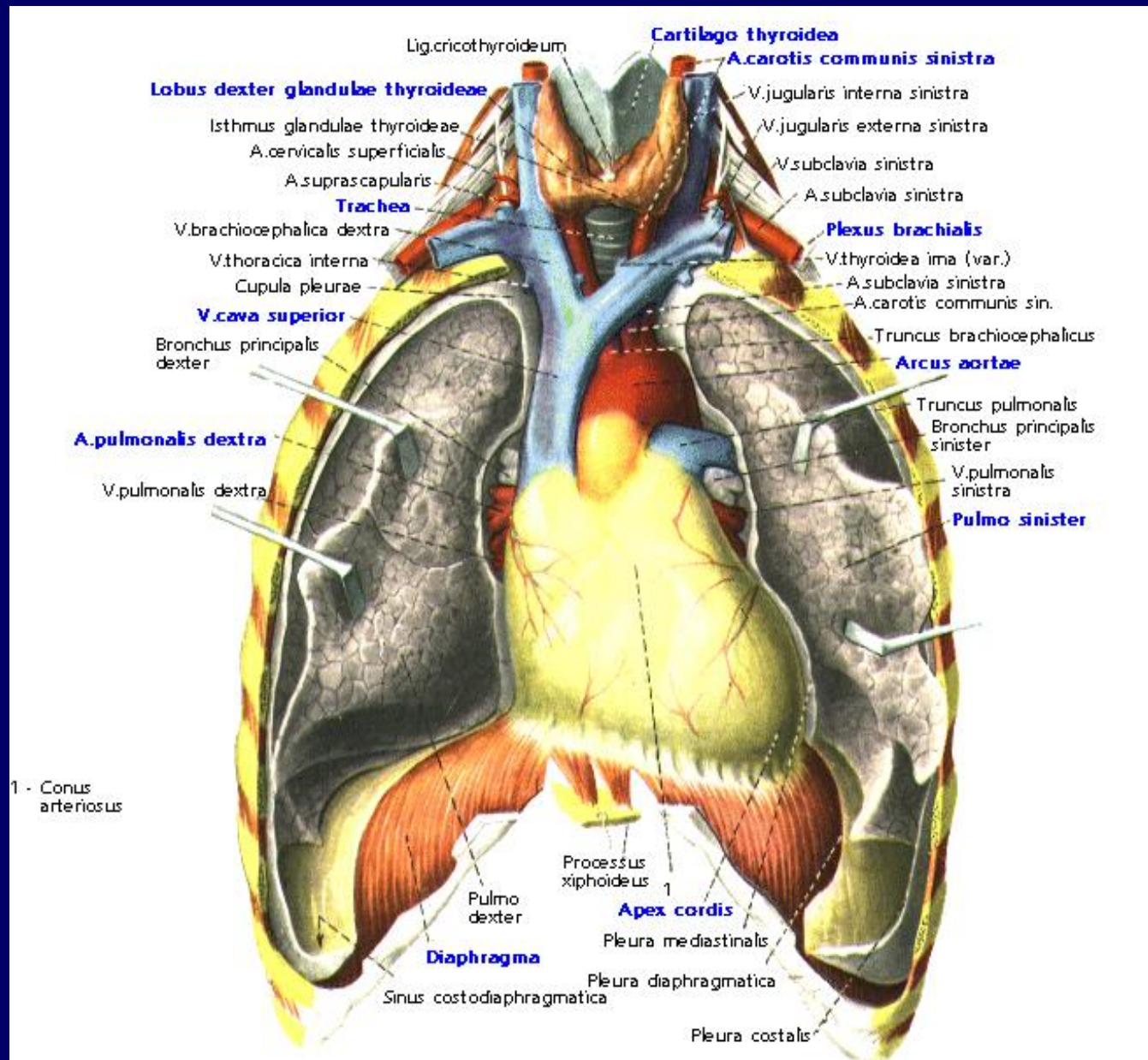
Purkinje lifleri

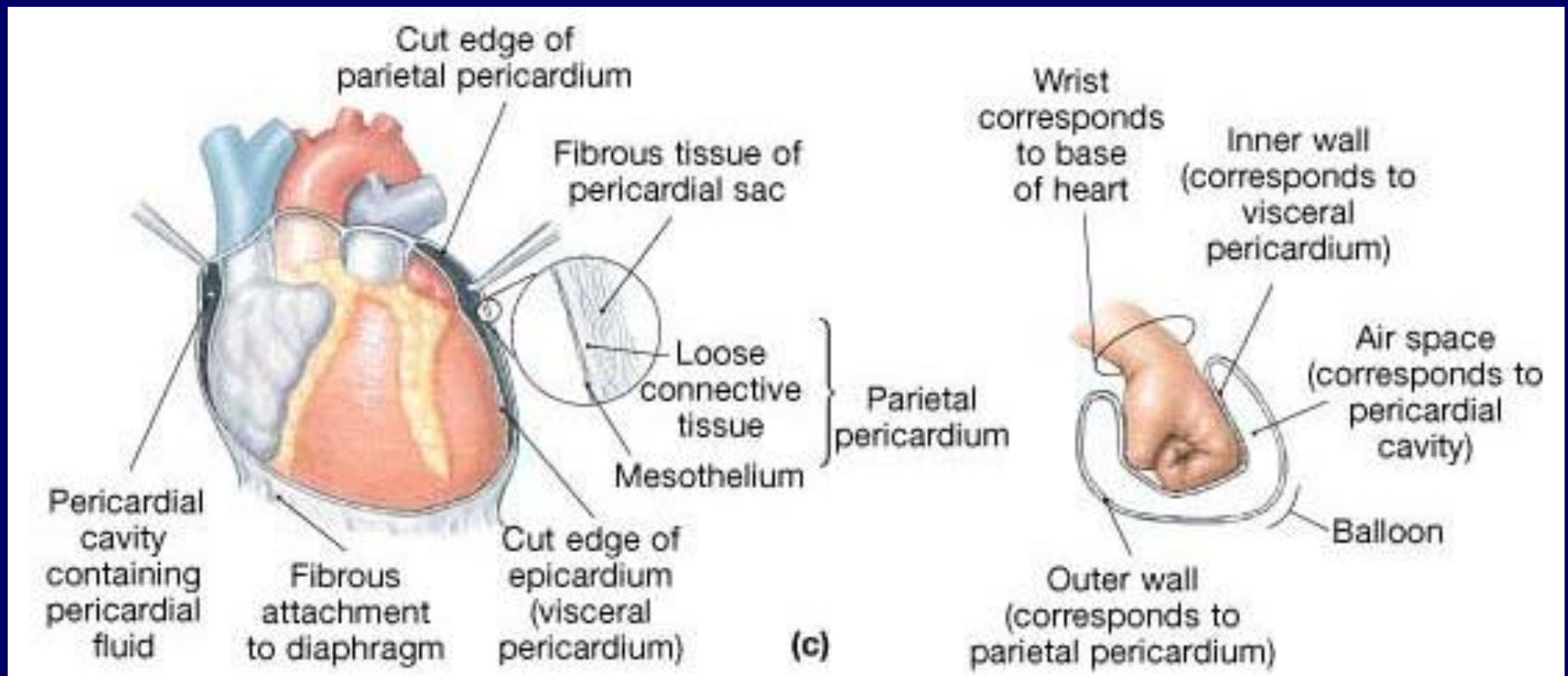


(a)



Pericardium





Pericardium fibrosum

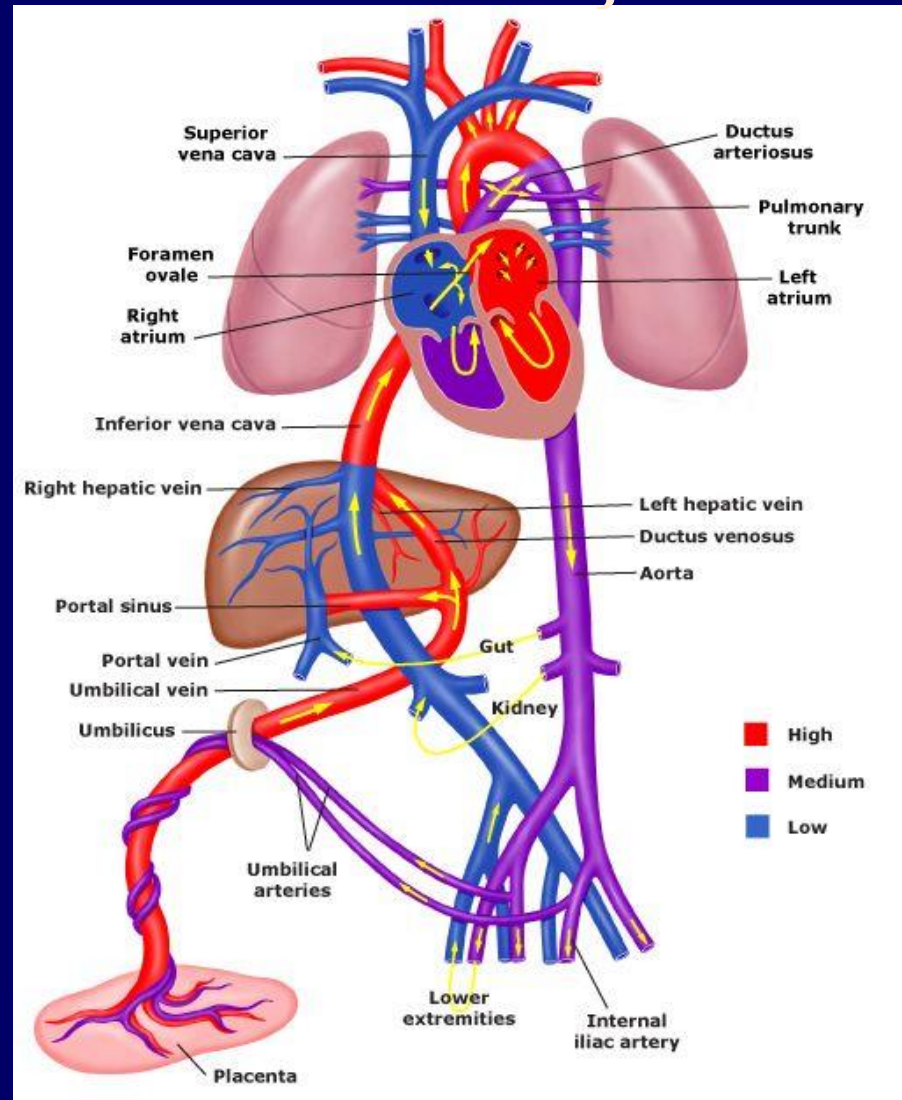
Pericardium serosum

-Lamina visceralis

-Lamina parietalis

Seröz perikardın salgıladığı ince kaygan sıvı bu boşluğun yüzeylerini film tabakası gibi kaplar ve kalbin atımları sırasında sürtünmeyi azaltır. Kalp zarı aynı zamanda kalbi yerinde tutar ve aşırı hareketlerini engeller.

Fetal Dolaşım



Kaynaklar

- □ Standring S. Gray's Anatomy
- □ Yıldırım M. İnsan Anatomisi
- □ Snell RS. (Çev: Yıldırım M.). Klinik Anatomi.
- □ Moore KL, Dalley AF. Clinically Oriented Anatomy.
- □ Gray's Anatomi Atlası (Çev. Ed.: Prof.Dr.Sezgin İlgi, Prof.Dr.Mehmet Yıldırım),
- □ Netter FH, İnsan Anatomisi Atlası
- □ Sobotta İnsan Anatomisi Atlası
- □ Fonksiyonel Nöroanatomi. Editör. Prof. Dr. Doğan Taner.
- □ Ozan H, Ozan Anatomi
- □ Cumhuriyet M. Temel Anatomi
- <http://anatomi.tip.akdeniz.edu.tr/>