

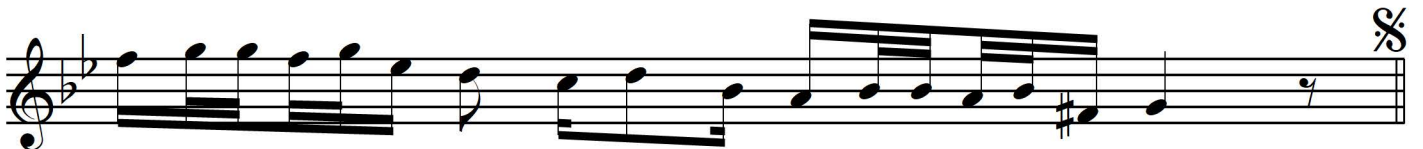
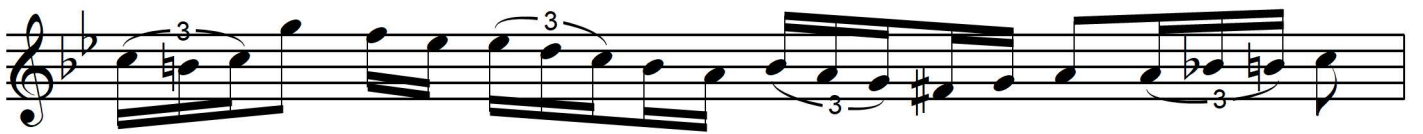
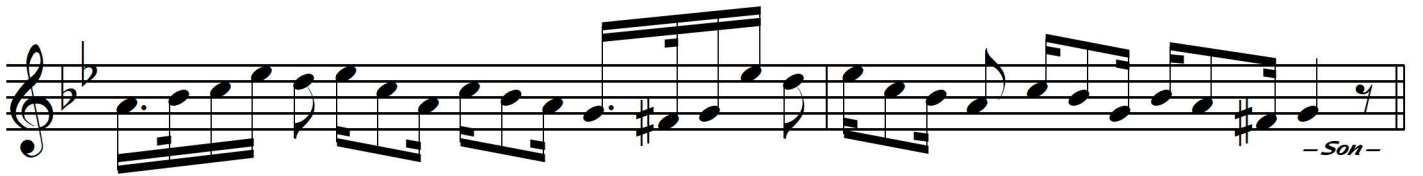
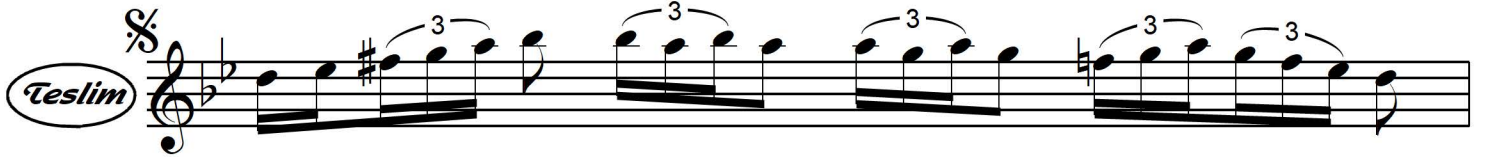
## Nihâvend Saz Semâî

"Gönlümün Melâli"

- 1 -

Ömer Altuğ (Tanbiri)  
(1905 - 1965)

Aksak Semâî ♩ = 112

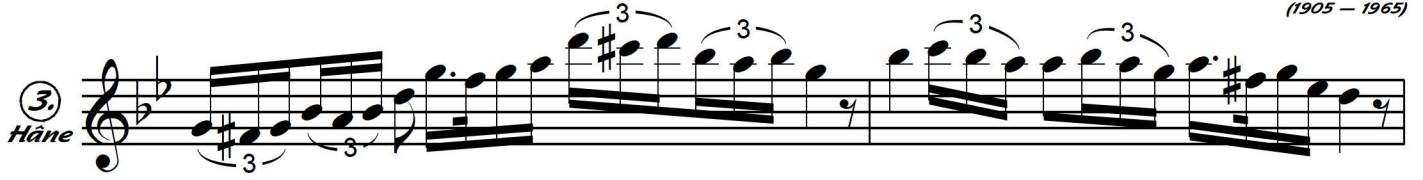


# Nihâvend Saz Semâî

"Gönlümün Melâli"

— 2 —

Ömer Altuğ (Tanbiri)  
(1905 — 1965)



Semâî ♩ = 160

