

MİKEN SERAMİĞİ

Bu sunum vermekte olduğum Minos-Miken Seramiği dersinde kullanılması için eğitim amaçlı hazırlanmıştır. Sunumda kullanılan materyaller telif hakkına sahip olup eğitim amaçlı olarak kullanımı uluslararası kanunlara göre serbesttir. Başka bir amaçla kullanılması için telif hakkına sahip kişilerden izin alınması gerekmektedir.





MER ADRIATIQUE

PONT-EUXIN

T H R A C I E

M A C É D O I N E

Héraclée-du-Pont

Byzance
Chalcédoine

PROPONTIDE

Abdère
Maronée

CHALCIDIQUE

Thasos

Sestos

Abydos

Cyzique

Sangarios

P H R Y G I E

Gordion

Corcyre

pénée
Larissa

THESSALIE

Pherai

M E R

Lemnos

Lesbos

Thermos

Delphes

BÉOTIE

EUBÉE

Chalcis

Phocée

Larissa

LYDIE

Hémos

ETOLIE

Thèbes

Erétrie

Chios

Smyrne

Sardes

Olympie

Pérachora

Sicyone

Corinthe

Athènes

Ephèse

Caystre

Argos

Egine

Samos

Méandre

Messène

Sparte

Paros

Délos

Naxos

Milet

CARIE

Halicarnasse

LYCIE

Xanthos

Mélos

Théra

Camiros

Ialysos

Lindos

RHODES

Cydonia

Axos

Cnossos

Dreros

CRÈTE

Prinias

Gortyne

Lato

Praisos

Mont Ida

M E R D E L I B Y E

-Yunan (Hellas) Seramiđi Őu evrelere ayrılır:

Erken Helladik	(EH)	2500-2000
Orta/olgun Helladik	(OH)	2000-1550
Geç Helladik I	(GH I)	1550-1450
Geç Helladik II	(GH II)	1450-1350
Geç Helladik IIIA	(GH IIIA)	1350-1250
Geç Helladik IIIB	(GH IIIB)	1250-1150

**Hellas veya Helladik Dönemi içindeki “Geç Evre” genelde “Miken” veya “Geç Hellas” evresi olarak bilinir.*

-Miken Seramiği arařtırmacılar tarafından gelişimsel aşamaları dikkate alınarak dönemlere ayrılmıştır. Çok sayıda kronoloji vardır.

-Genelde (kültürel ve tarihsel gelişimler dikkate alınarak) 4 (dört) ana döneme/aşamaya/evreye ayrılır.

1.LH I-IIA MÖ.1675/1650-1490/1470

LH I MÖ.1675/1650-1600/1550

LH IIA MÖ.1600/1550-1490/1470

2.LH IIB-III A1 MÖ.1490/1470-1390/1370

LH IIB MÖ.1490/1470-1435/1405

LH III A1 MÖ.1435/1405-1390/1370

3.LH IIIA2-IIIB MÖ.1390/1370-1190

LH IIIA2 MÖ.1390/1370-1320/1300

LH IIIB MÖ.1320/1300-1190

4.LH IIIC MÖ.1190/1050-1035

Erken Evre

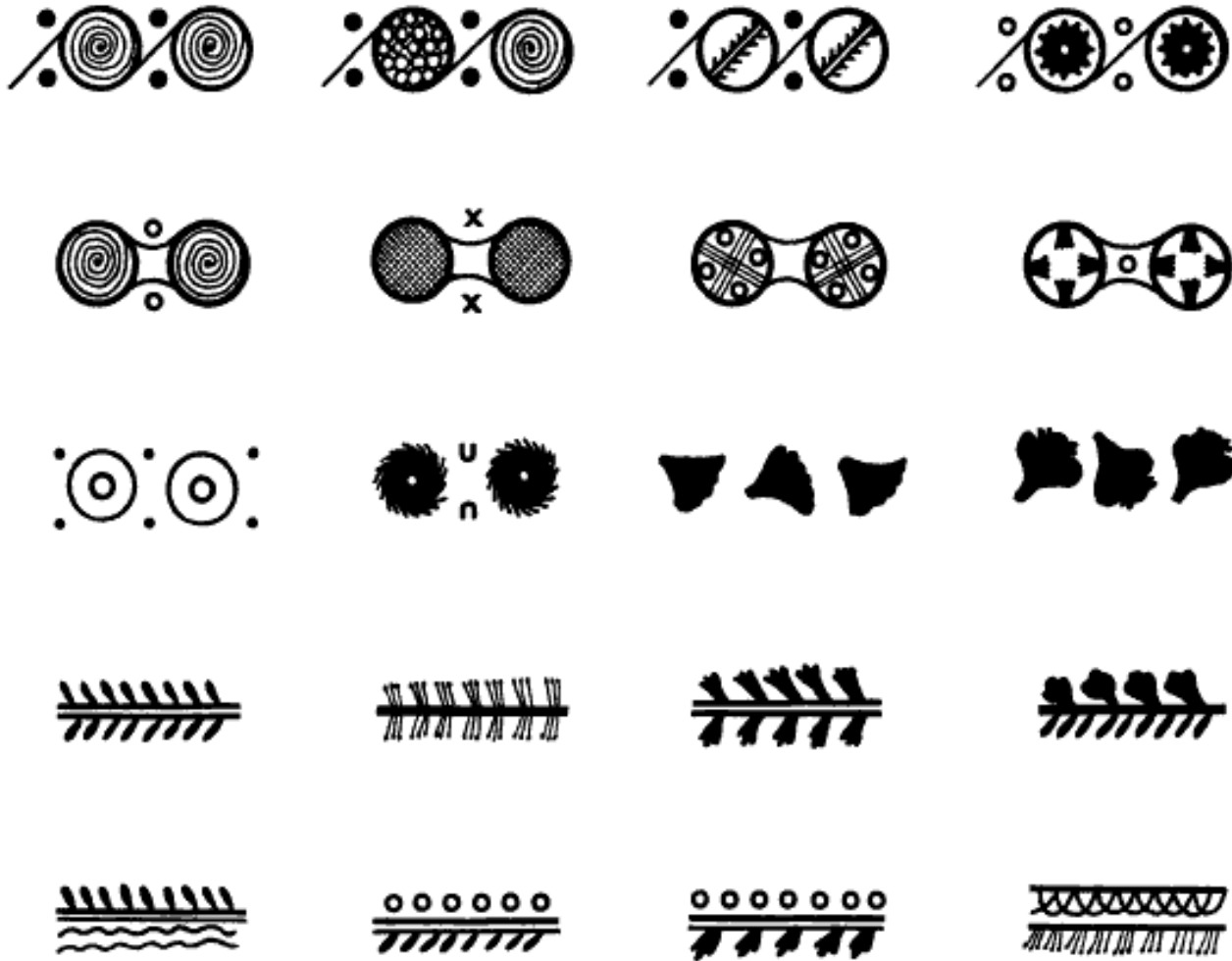
Gelişim Evresi

Geç Evre:Sub Miken

Sub Miken MÖ.1100-1050

*L.Geç/Late

H.Helladic/Hellas/Yunan



LH I motifleri

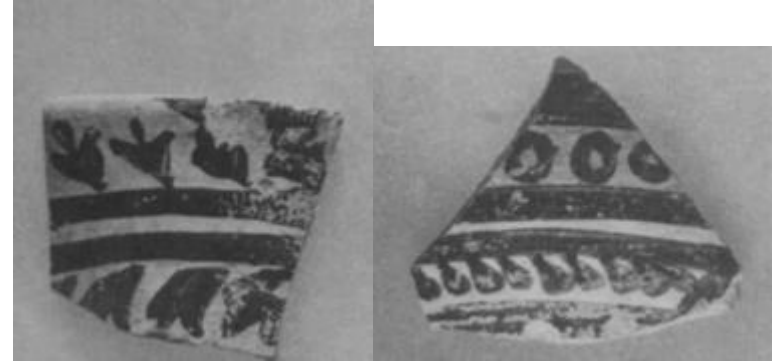
LH I
Seramik Parçaları



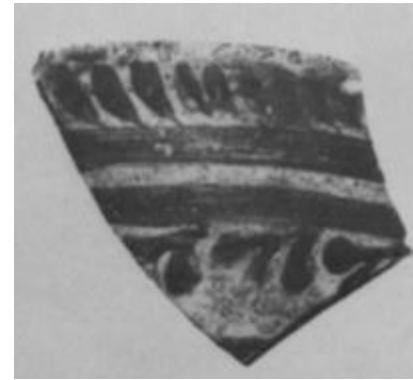
Stephanos'tan



Karakou



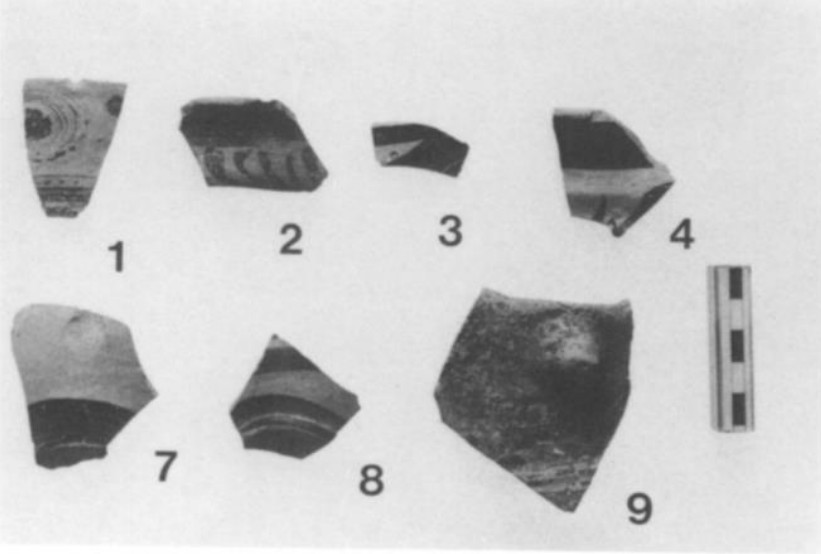
Mikenai



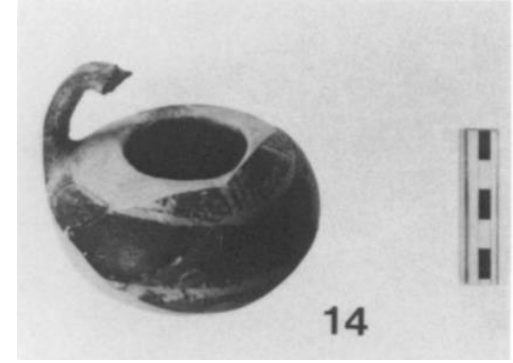
Lipari



Mikenai'den. LH I

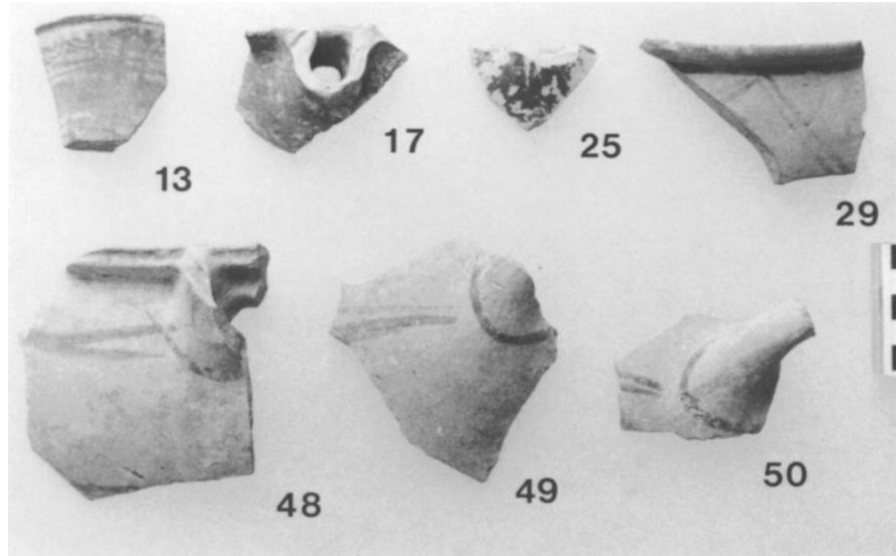


Vazo parçaları
Karakou'dan

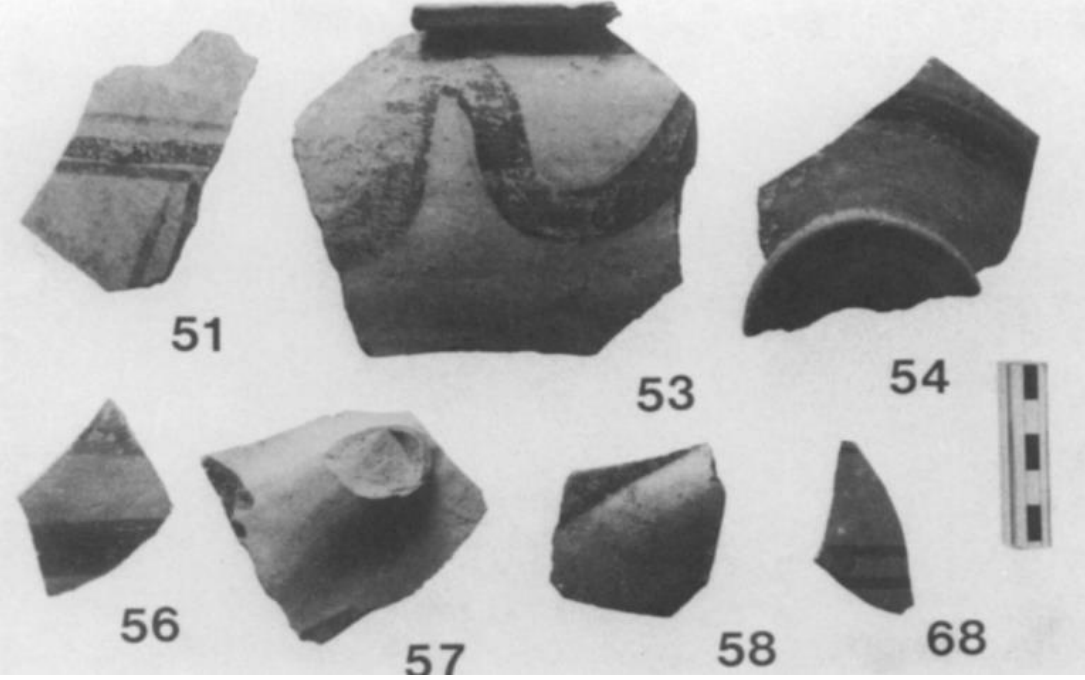


Light on dark

Kaliteli bezeme

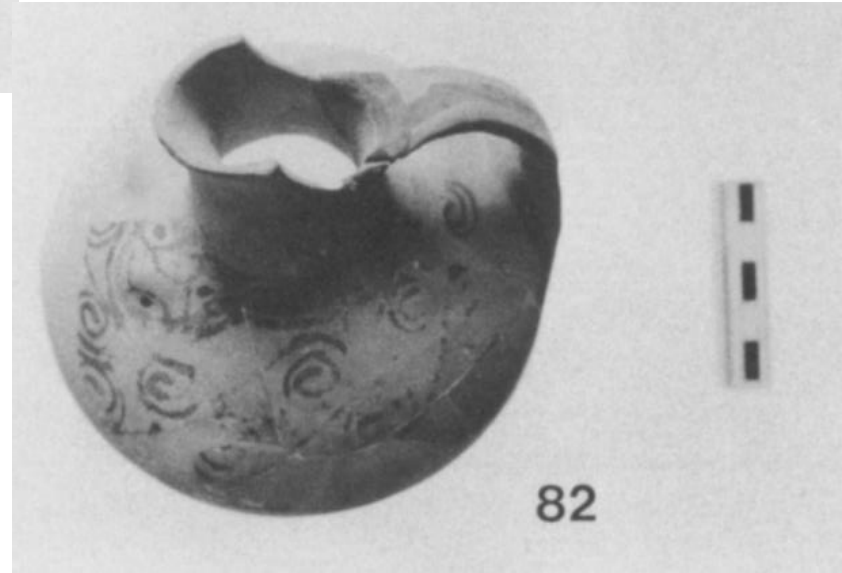


13-25.Kaliteli bezeme
29-50. Polykrom bezeme

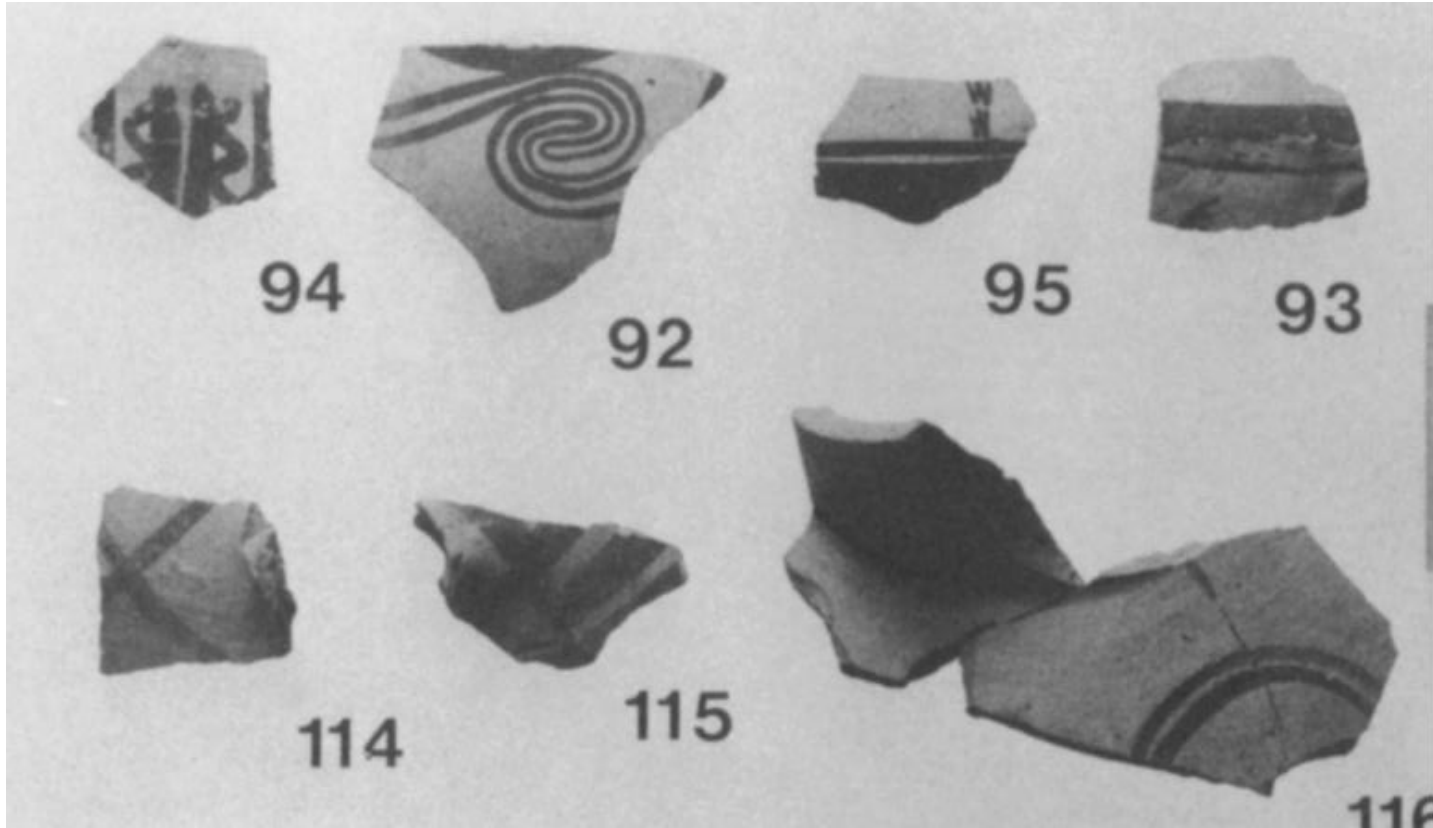


Vazo parçaları
Karakou'dan

Polykrom bezeme

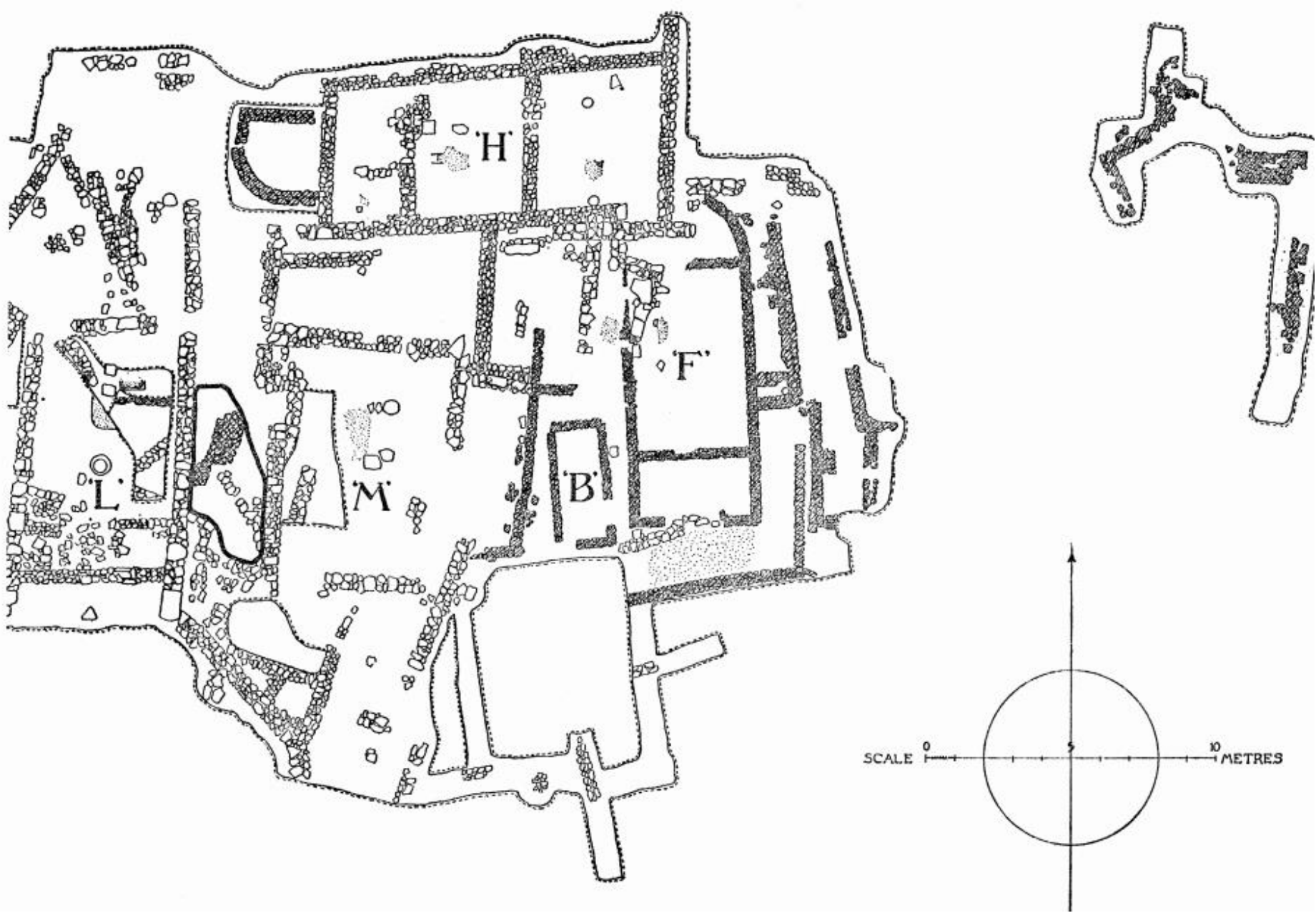


Mat bezemeli sürahi



Mat bezemeli vazo parçaları

**Vazo parçaları
Karakou'dan**



(Yeni) Korinth'in batısındaki Karakou- Doğu bölümü-kazılan alan



Vapheio Fincanları. Nafplion-Palamidi (Argos körfezi yakını) nekropolünden.



41



39



40



-Vapheio fincanları



-Vapheio fincanları



Vapheio vazosu (Şiddet) sahnesi



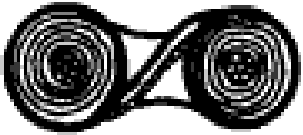
Boksör. Hagia Triada'dan taş rhyton.
Herakleion Museum



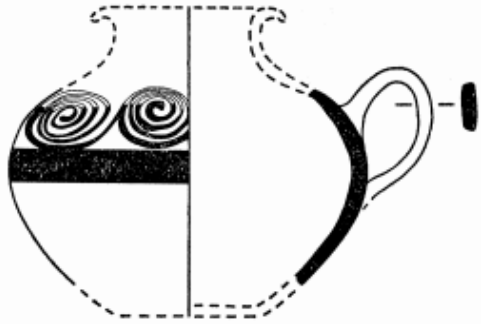
-Vapheio fincanları

LH IIA (MÖ.1600/1550-1490/1470)

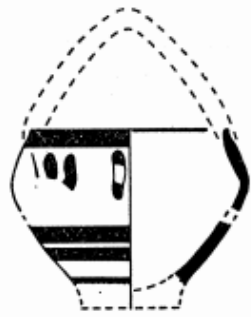
- Kaliteli vazolarda keskin bir artış vardır.
- kaliteli bezenmişlerdir.
- Peloponnessos'ta tekdüzelik hakimdir.(bezeme ve biçimde)
- Merkez Yunanistan'da ise çok az Minos etkisi vardır (Güneyden kuzeye yayılma nedeniyle).
- Bu dönemde mat boyalı seramik daha az iken, Gri Minyas (Minyan) seramiği tamamen ortadan kaybolur.
- Bu dönemin sevilen vazo tipleri Kadeh, Sürahi ve Kavanozlardır.



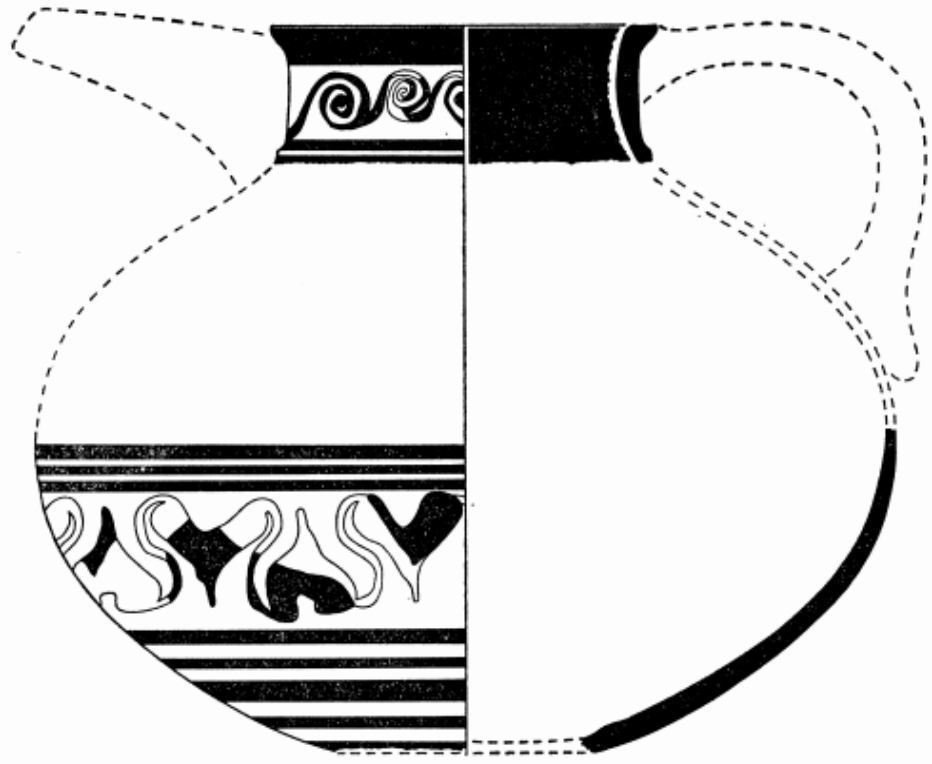
LH IIA bezemeleri



1

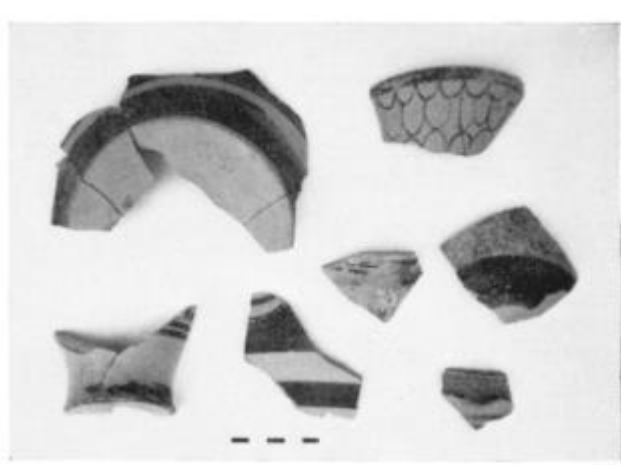


3



2

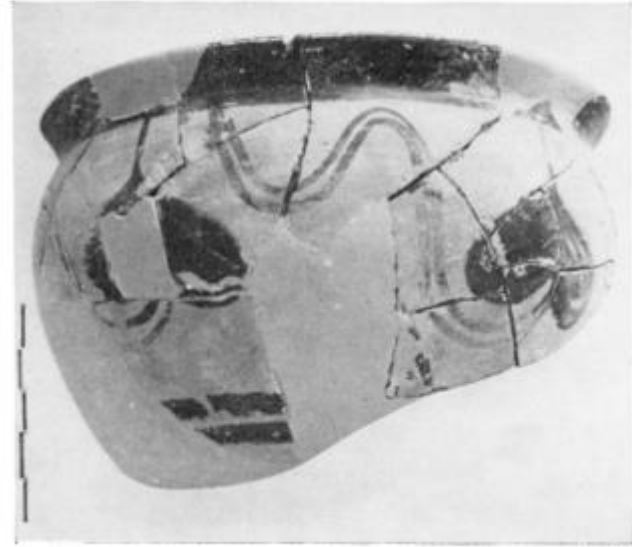
-LH IIA
Mikenai'den. vazolar



(c)



(d)

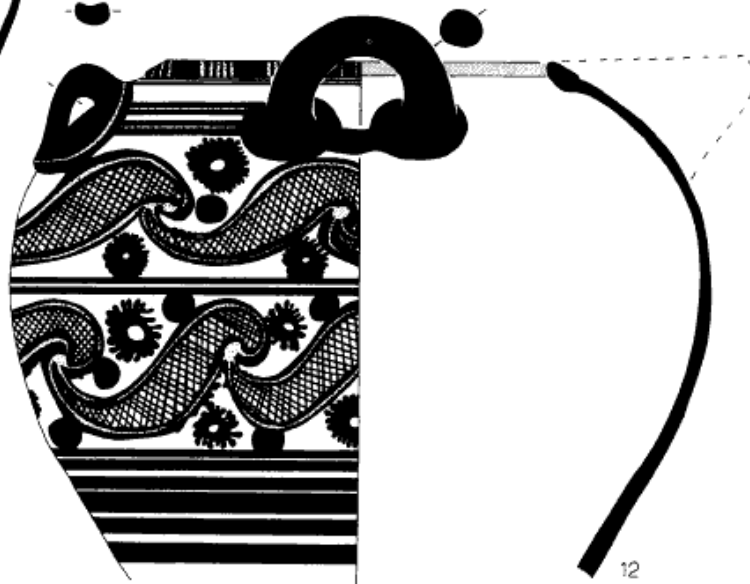
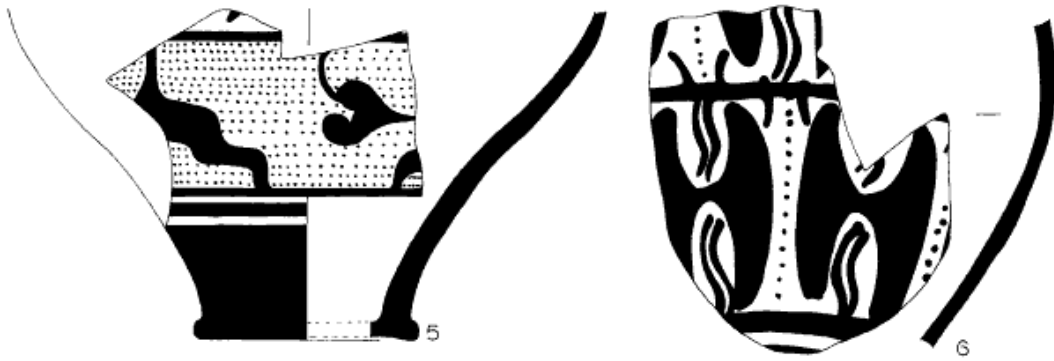


(e)



(f)

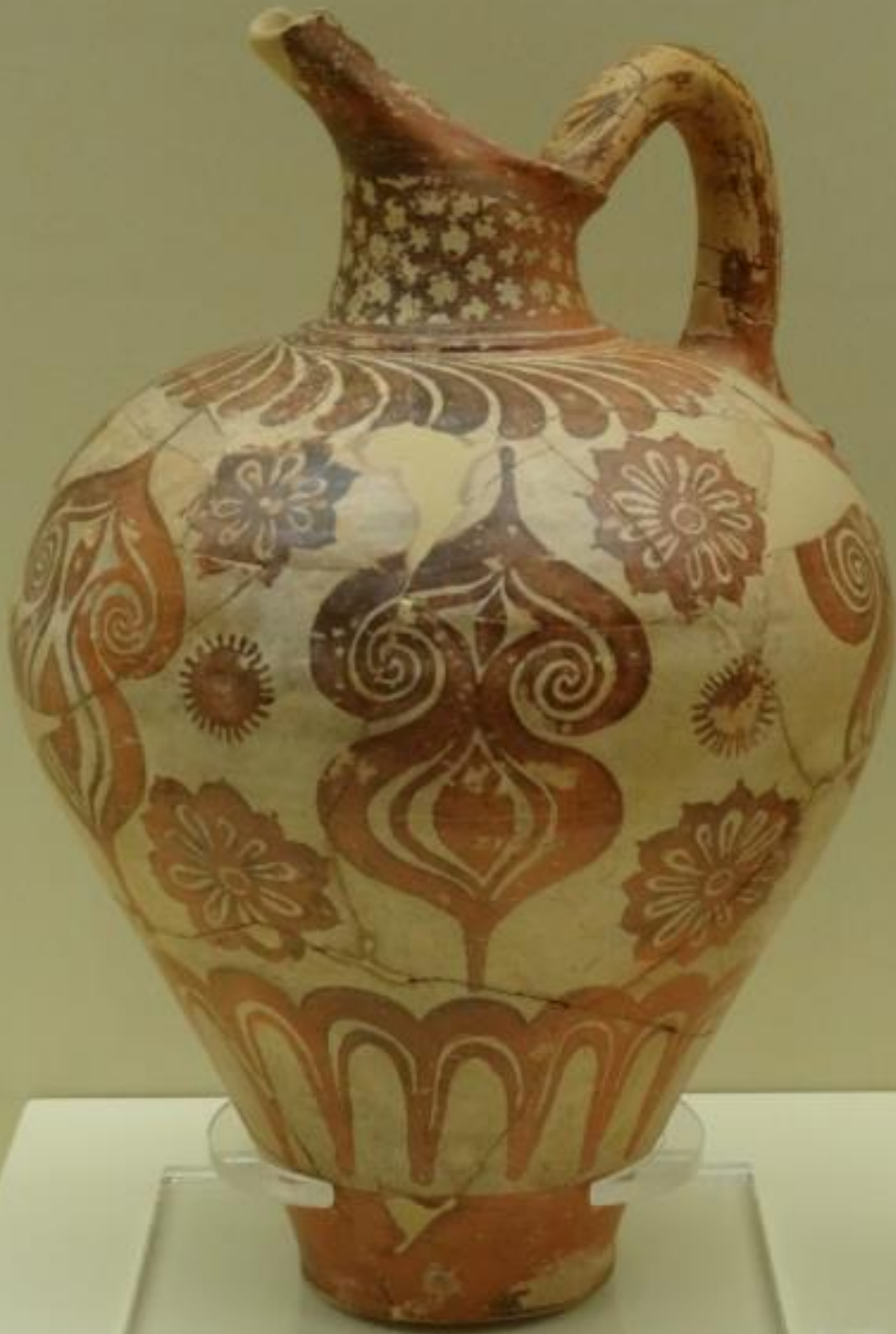
-Karakou'dan LH
IIA-IIIB vazoları



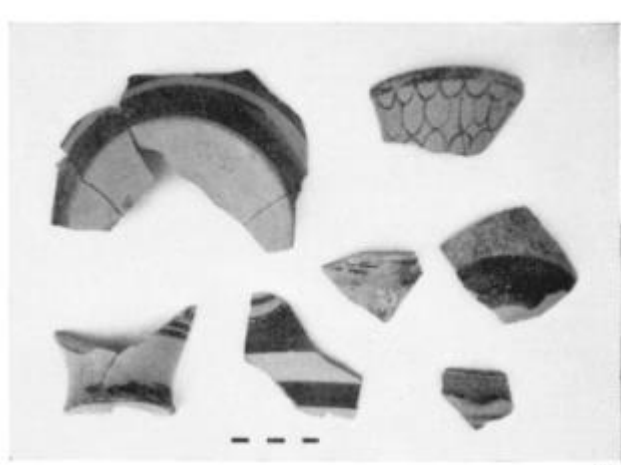
-LH IIA.
Phylakopi'den.



Tsoungiza'dan (Mikenai kuzeyi)
LH IIA.



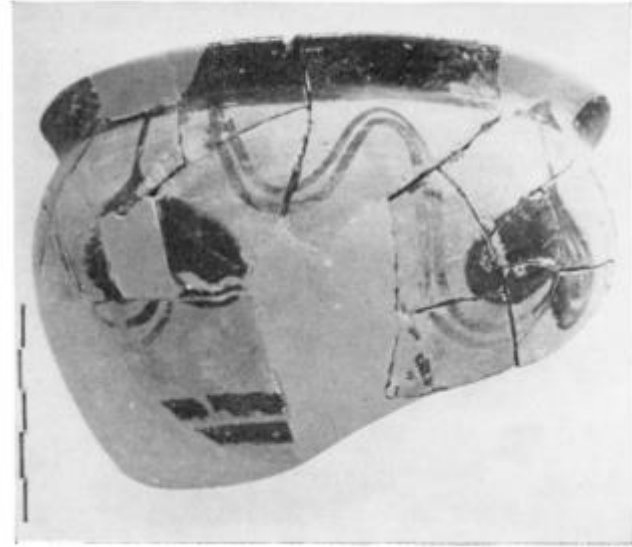
-LH IIA. Akıtacaklı sürahi
Mikenai'de (Kalkani
Tepesinde) 518 nolu
mezardan.



(c)



(d)

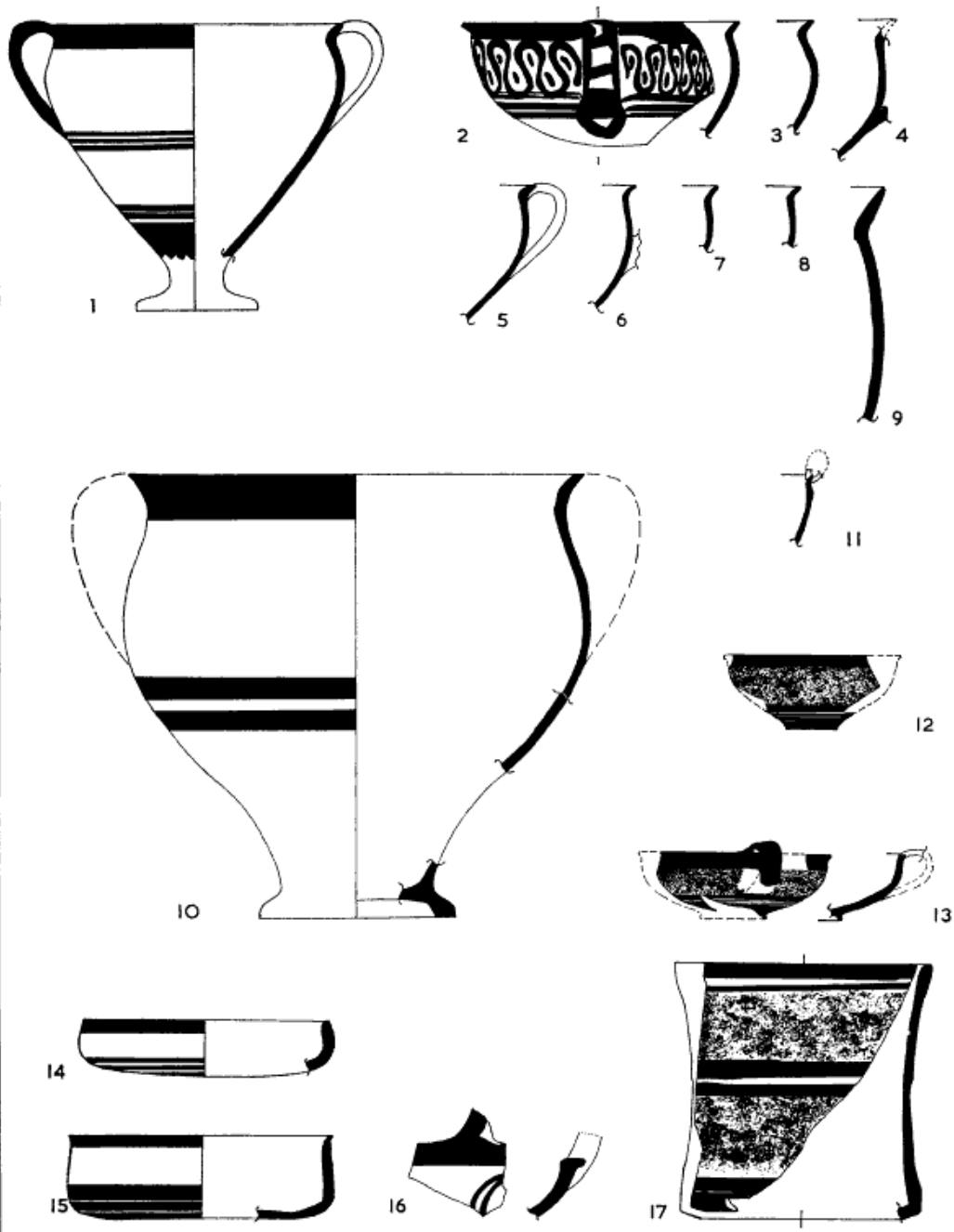


(e)

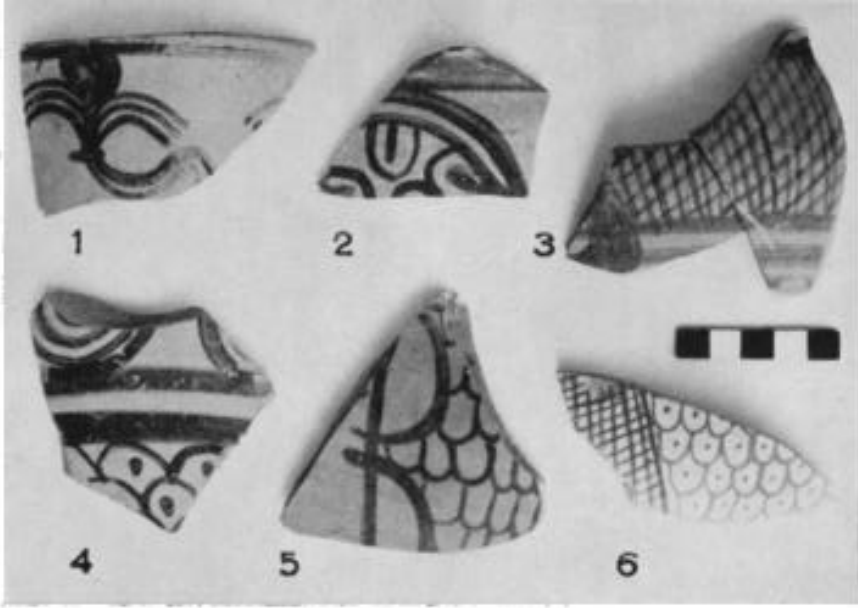


(f)

-Karakou'dan LH
IIA-IIIB vazoları

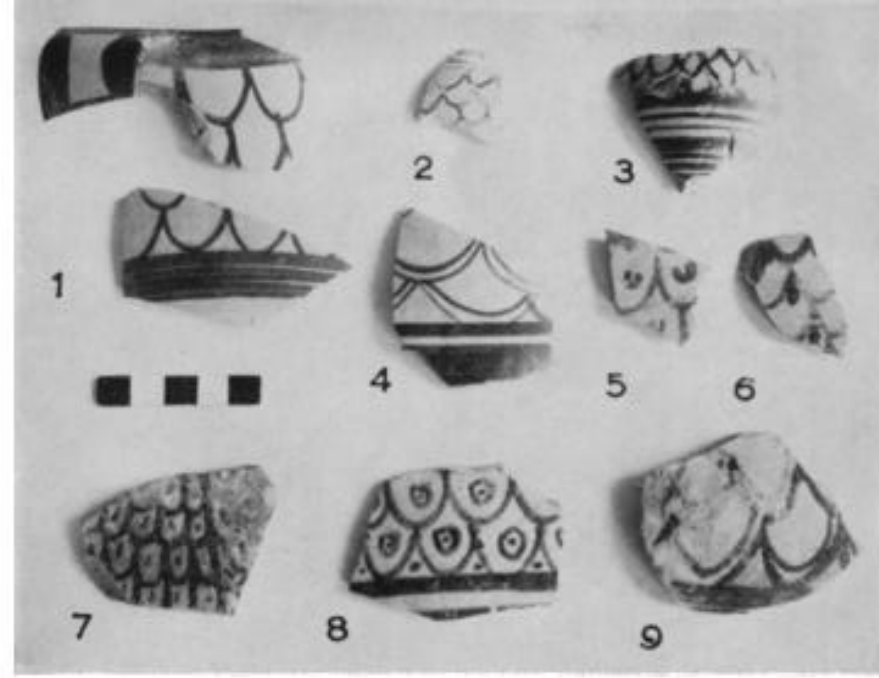


Mikenai'den LHIII A1 vazoları



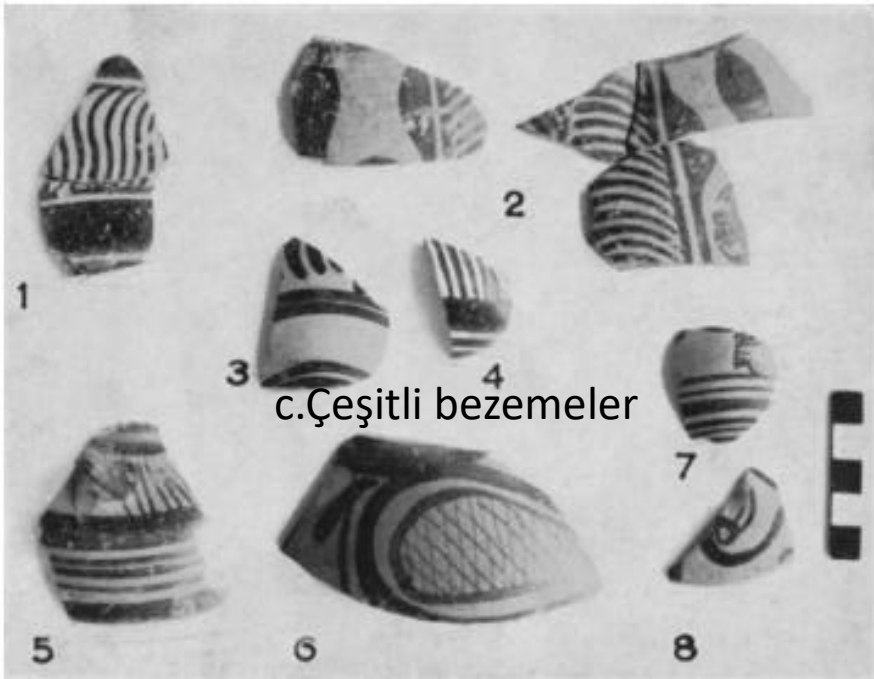
(a)

a.Çeşitli bezemeler

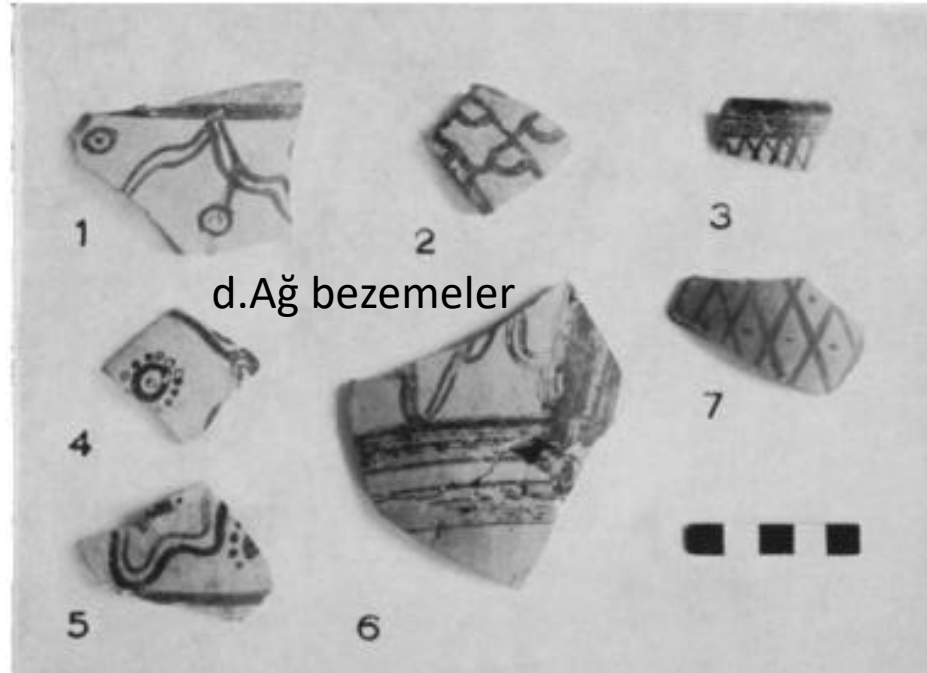


LH IIIA1 seramik parçaları.

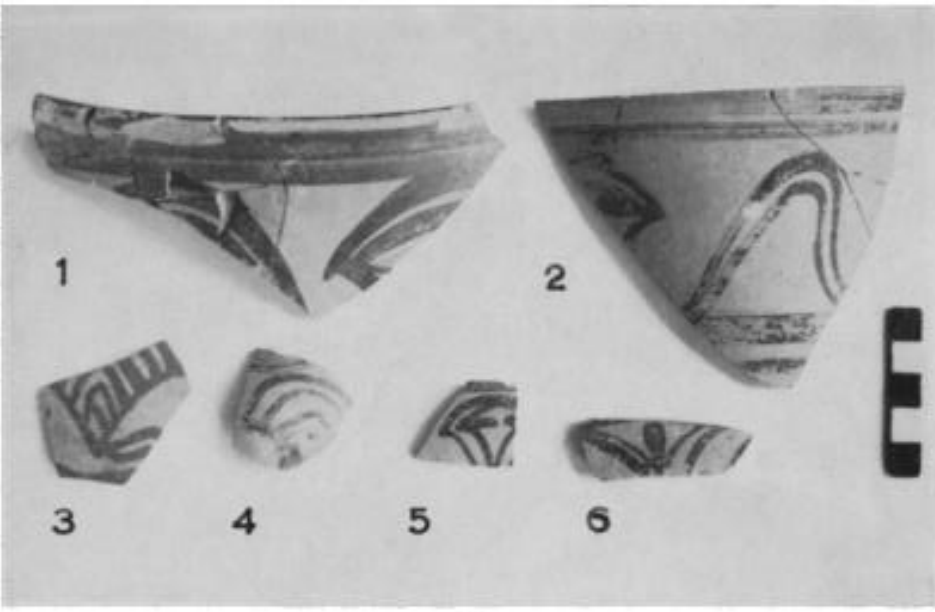
b.Çeşitli bezemeler



c.Çeşitli bezemeler



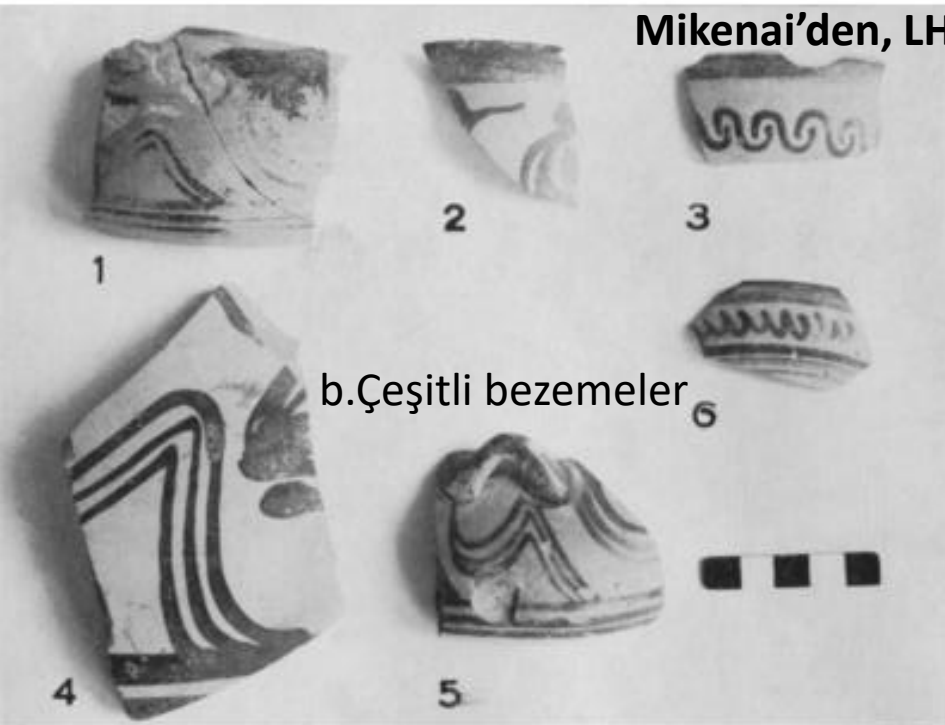
d.Ağ bezemeler



a.Çeşitli bezemeler

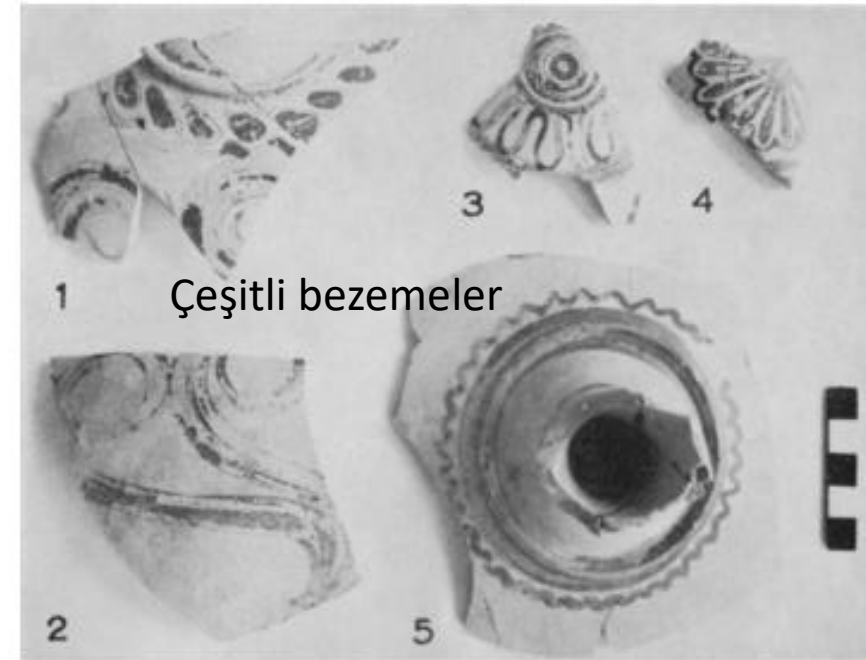


c.Çeşitli bezemeler



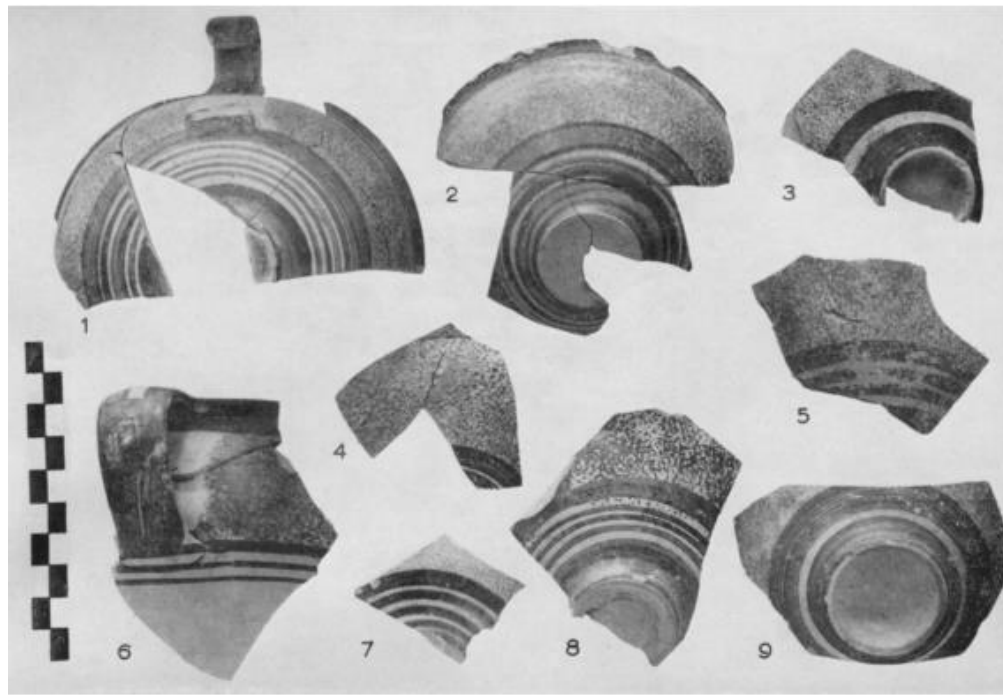
b.Çeşitli bezemeler

Mikenai'den, LH IIIA1 seramik parçaları. ^(c)

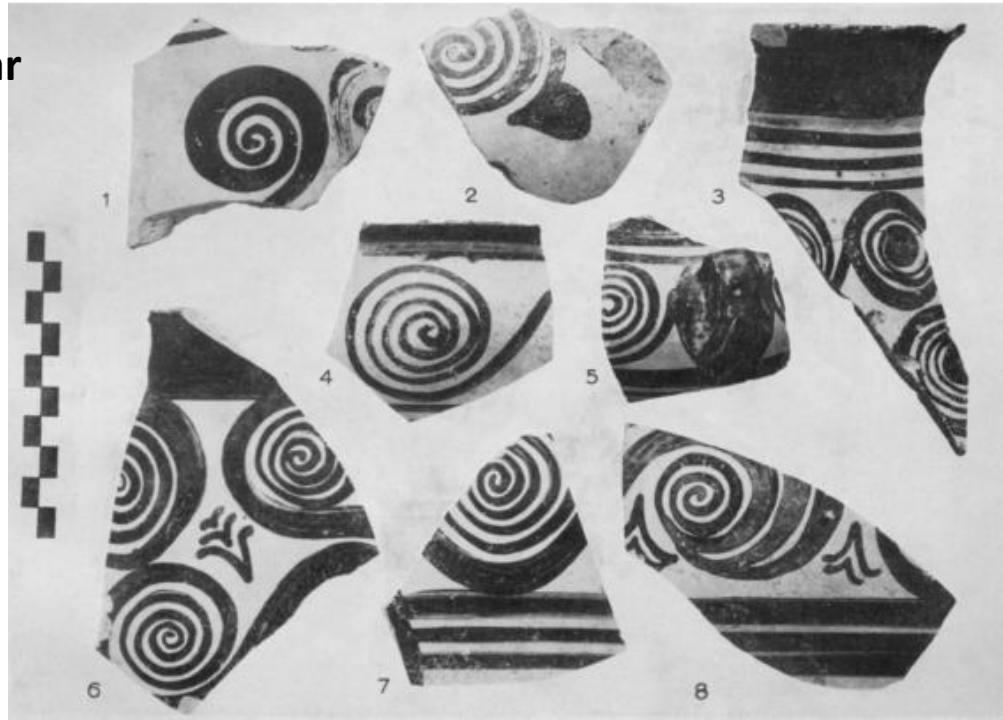


Çeşitli bezemeler

**LH IIIA1
Mikenai'den
Bezeli parçalar**



Noktalı bezemeler



Argonaut ve
Spiral
bezemeler

LH IIIA1
Mikenai'den
Bezemeli parçalar



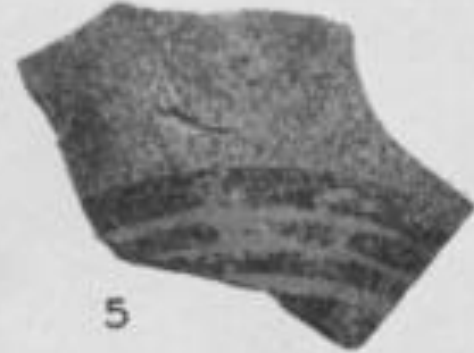
1



2



3



5



4



6



7



8



9

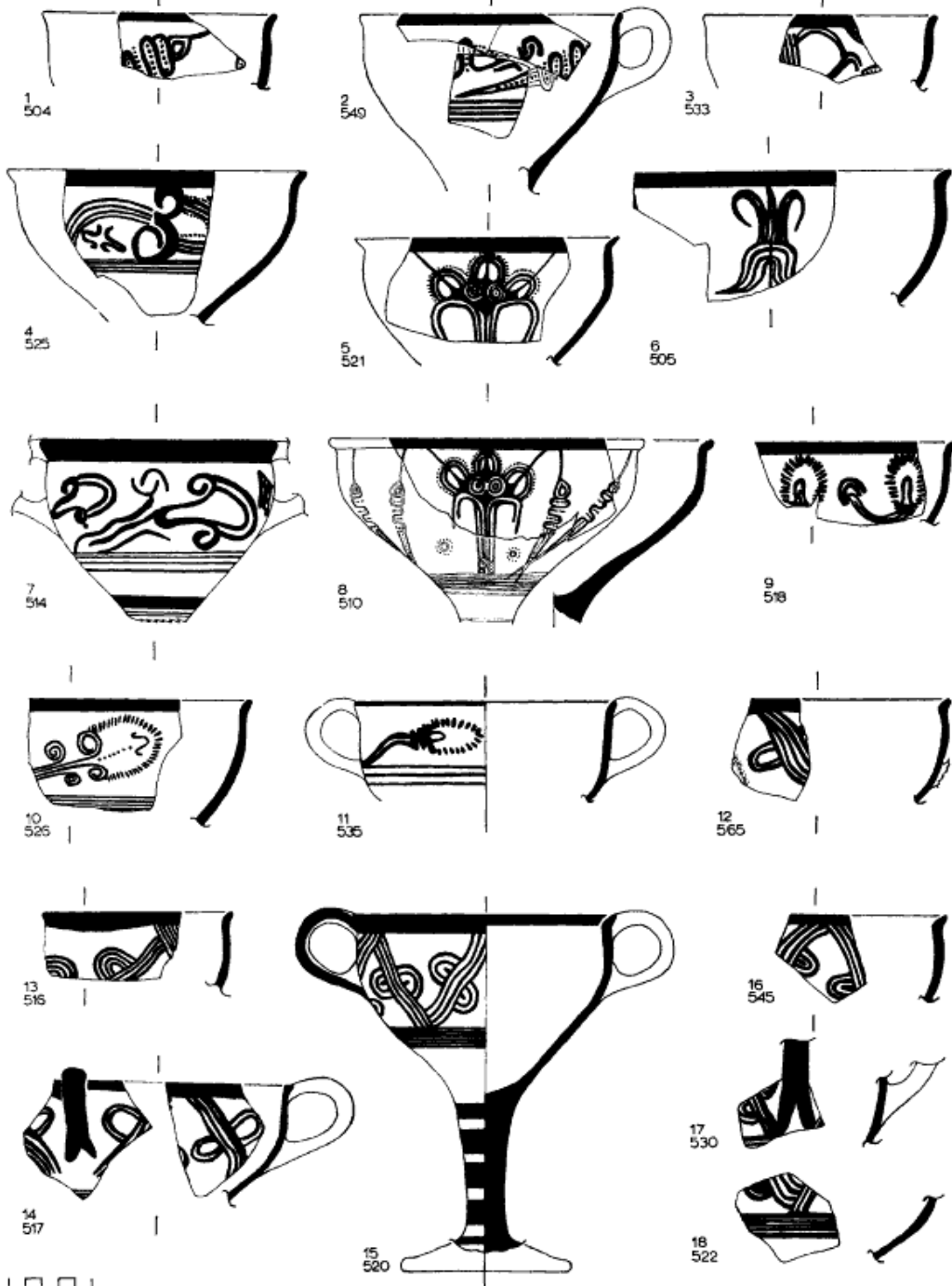


Noktalı bezemeler



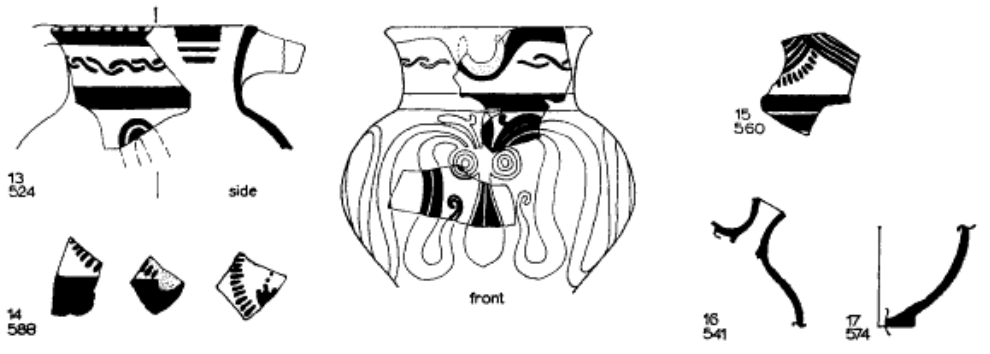
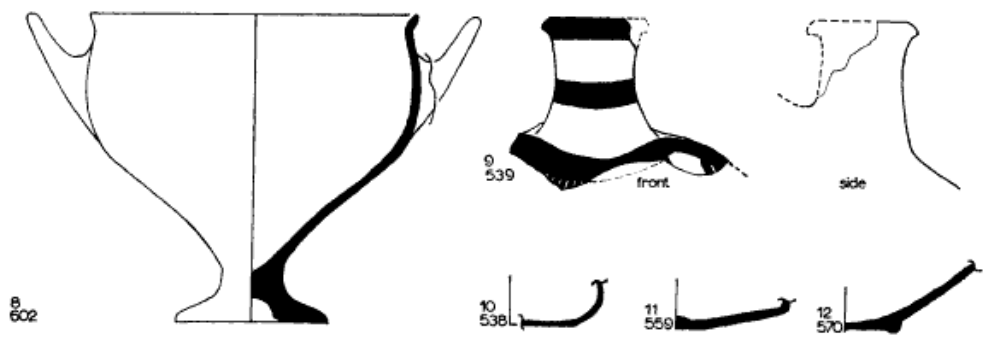
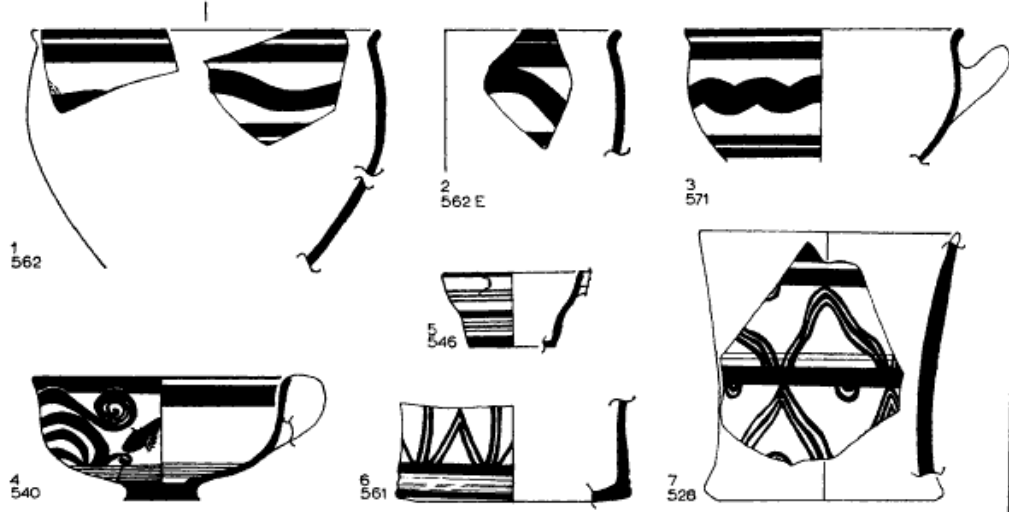


LH IIIA2
Kıbrıs'tan
Üzengi Vazo.



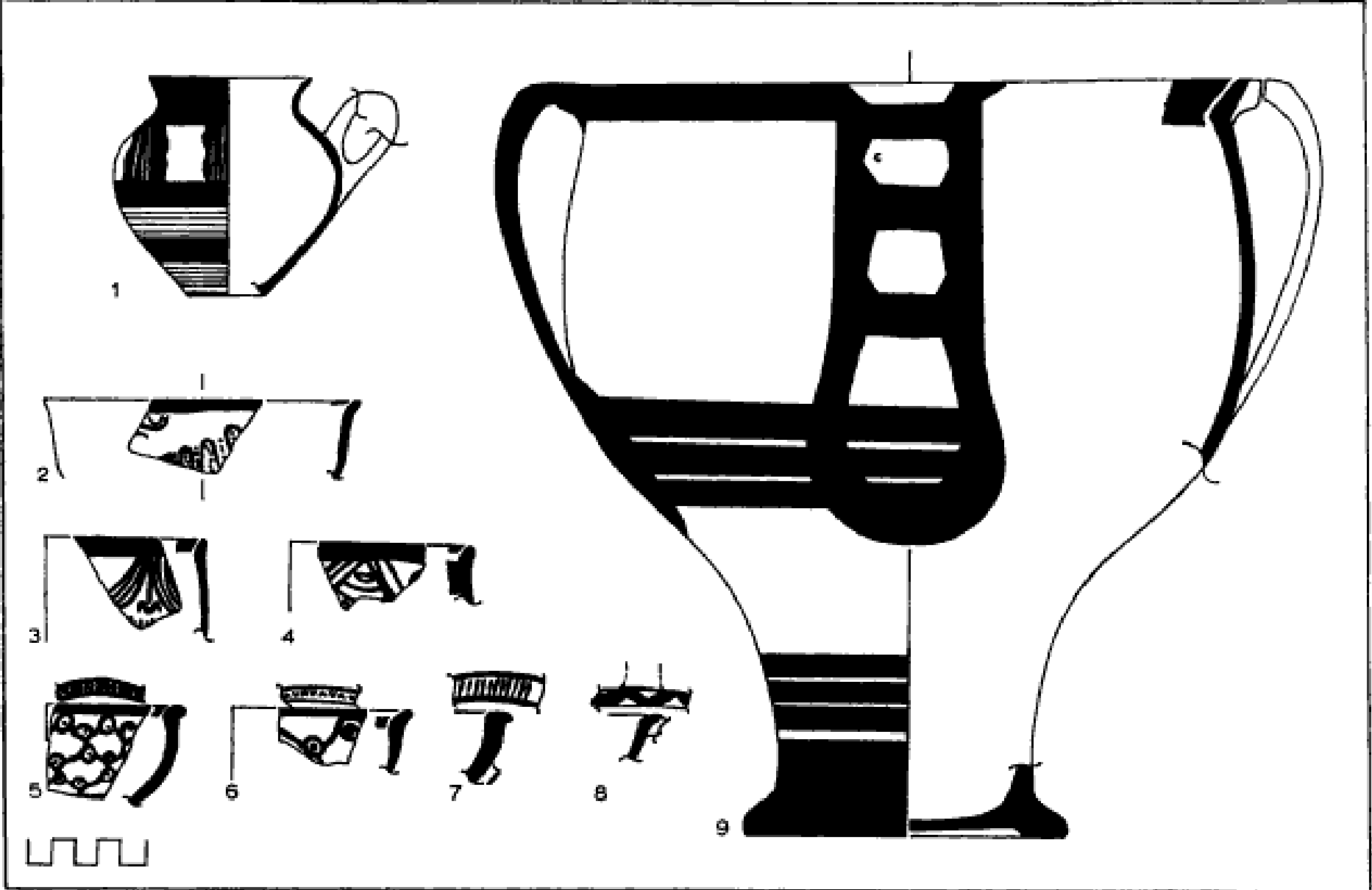
LH IIIA2
Mikenai'den Kylixler.





LH IIIA2
Mikenai'den vazolar

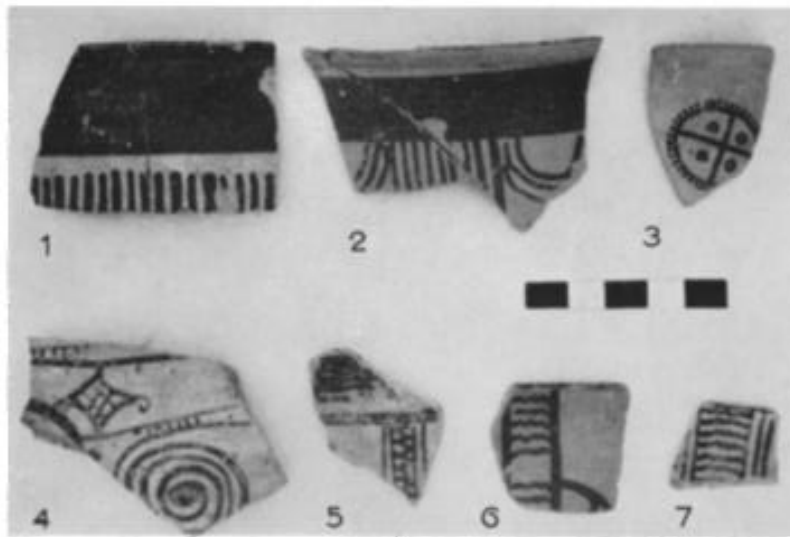




LH IIIA2
Mikenai'den vazolar



(a)

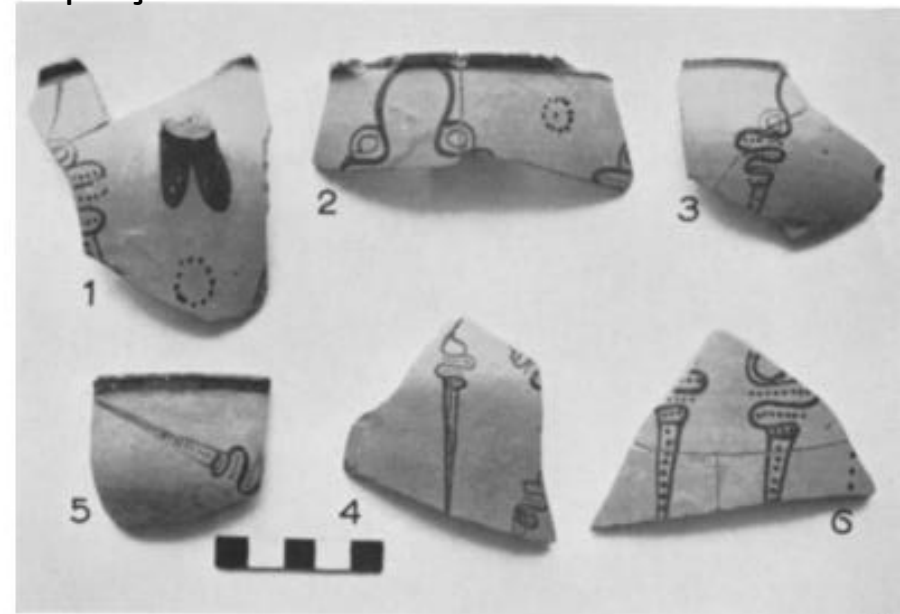
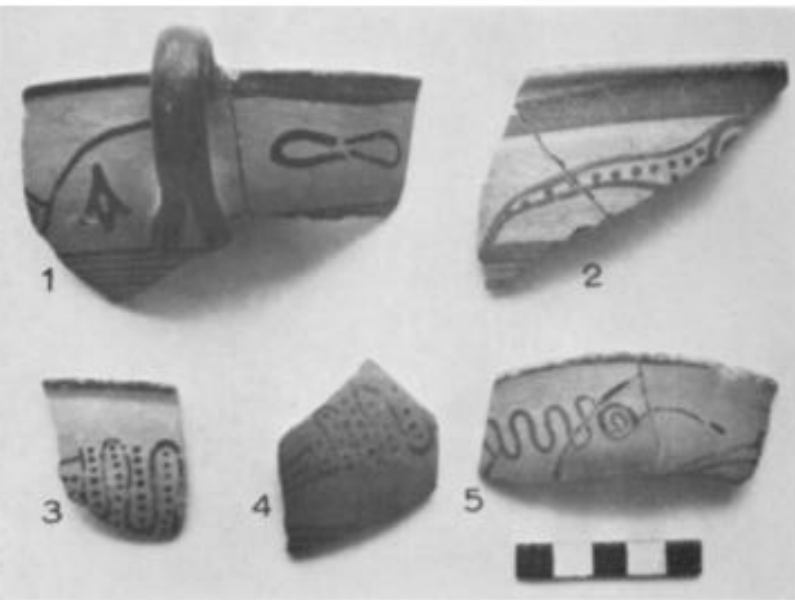


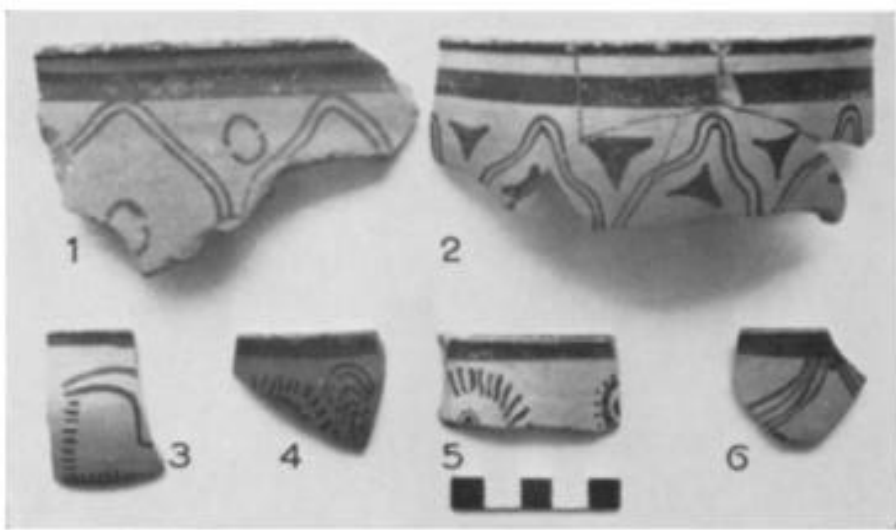
(b)



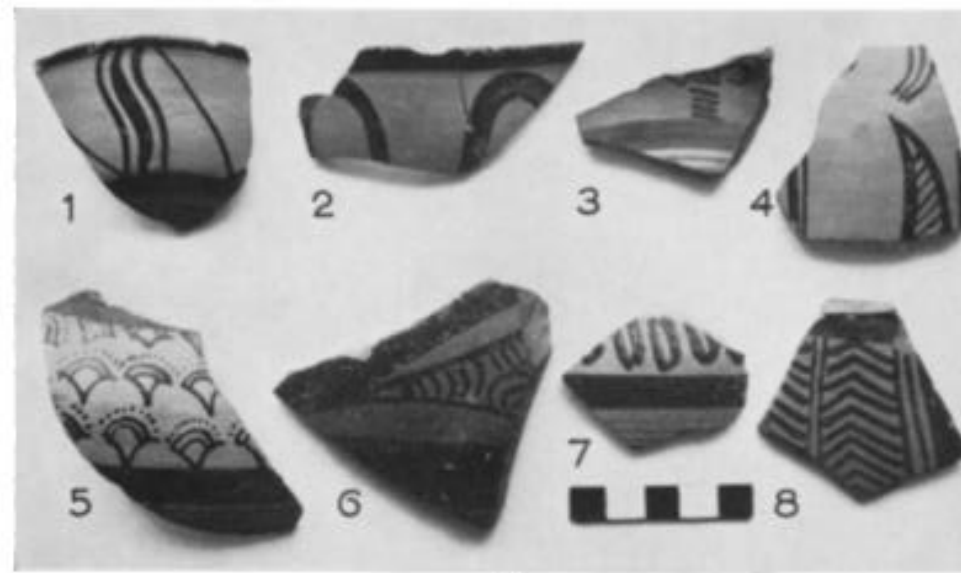
(c)

LH IIIA2
Mikenai'den vazo parçaları





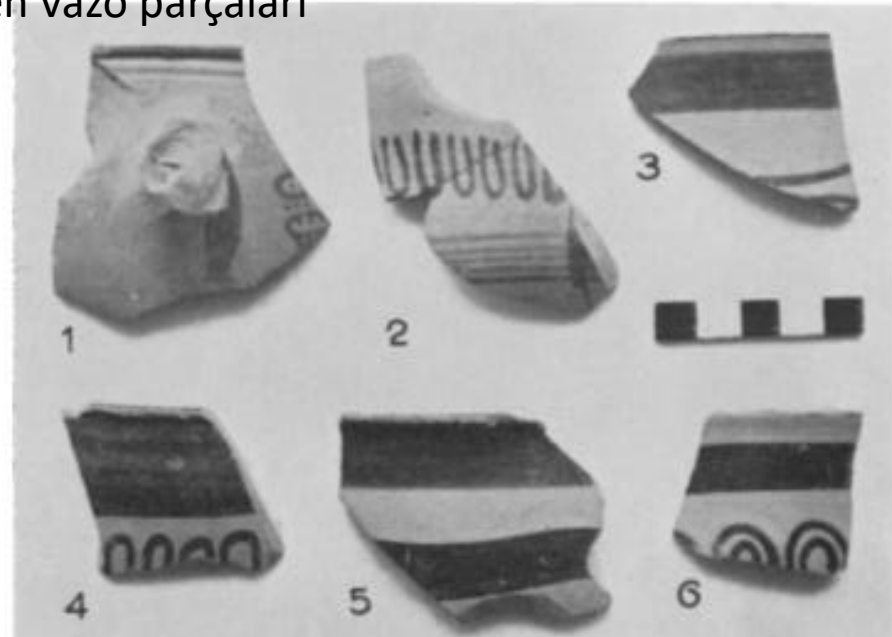
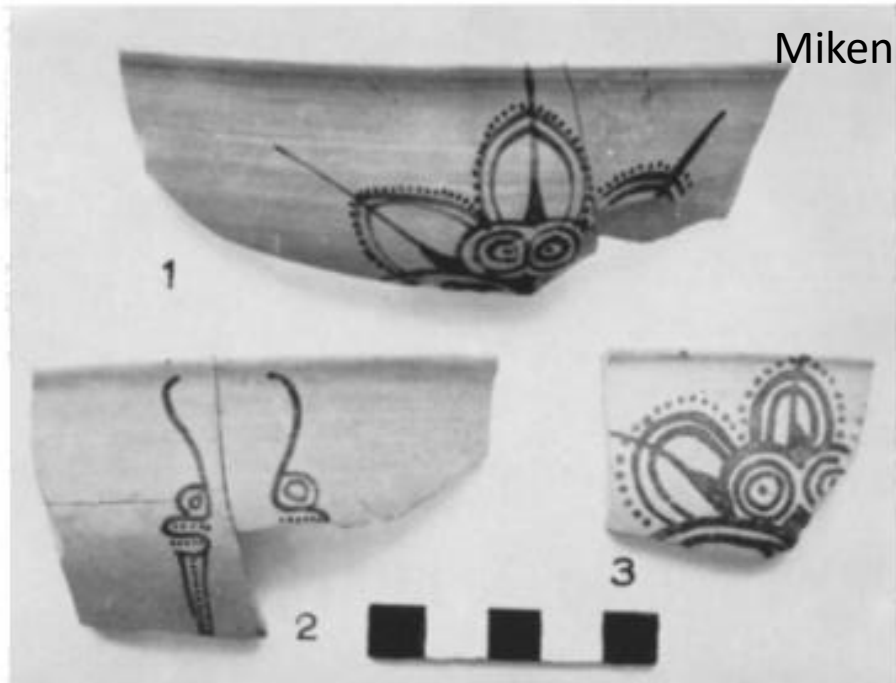
(a)



(b)

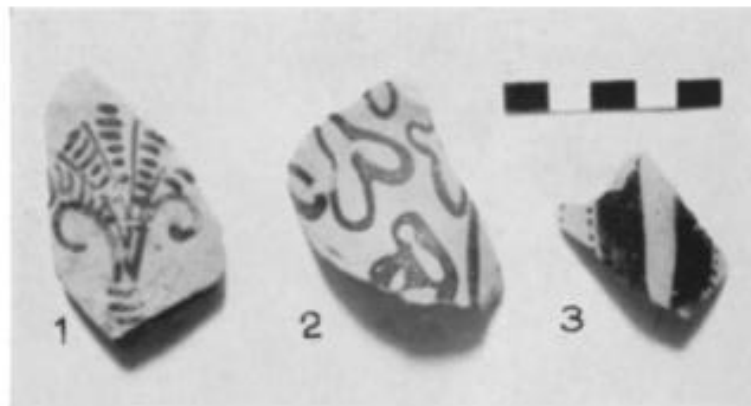
LH IIIA2

Mikenai'den vazo parçaları





(a)



(b)

LH IIIA2
Mikenai'den vazo parçaları

