



Kalyan Minare (*Kalan*)

Özbekistan Buhara

Bani, Muhammed bin Süleyman Arslan Han

521 (1127)

Yüksekliği 45,60 m









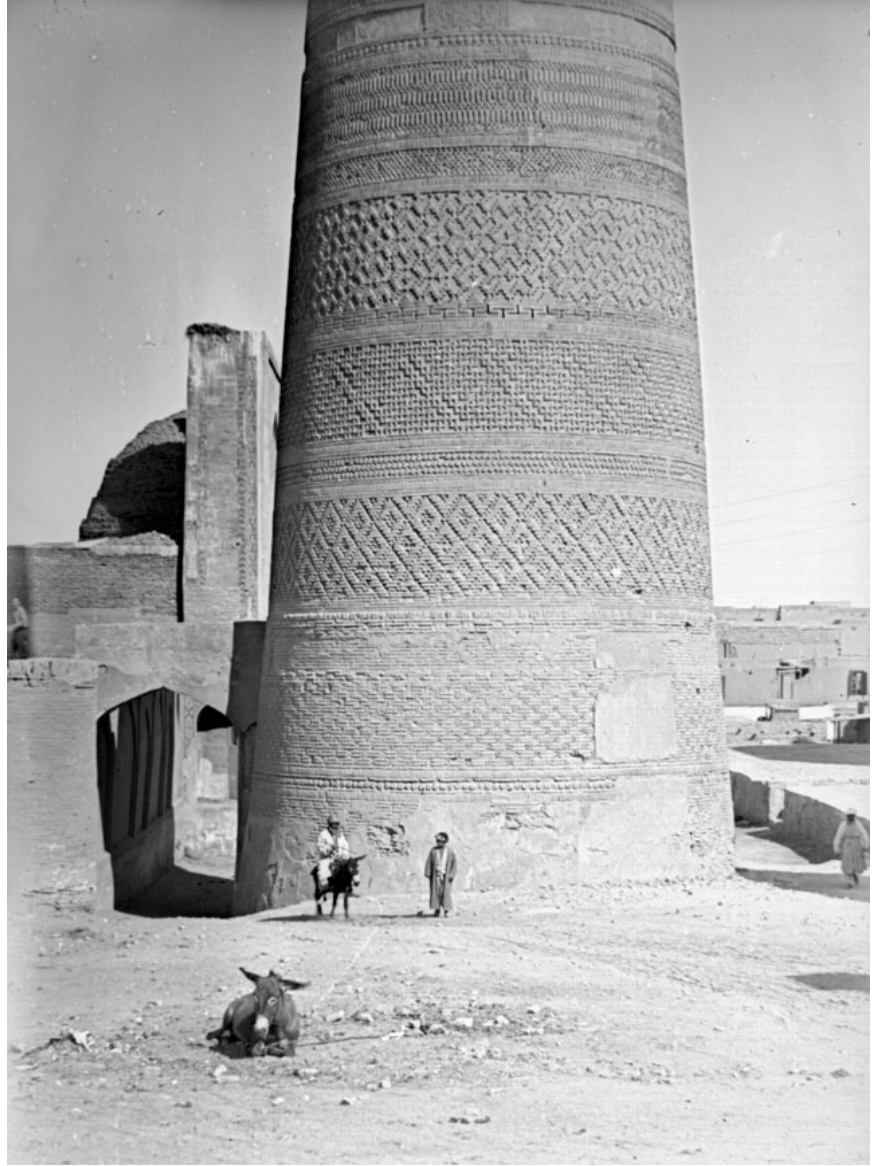


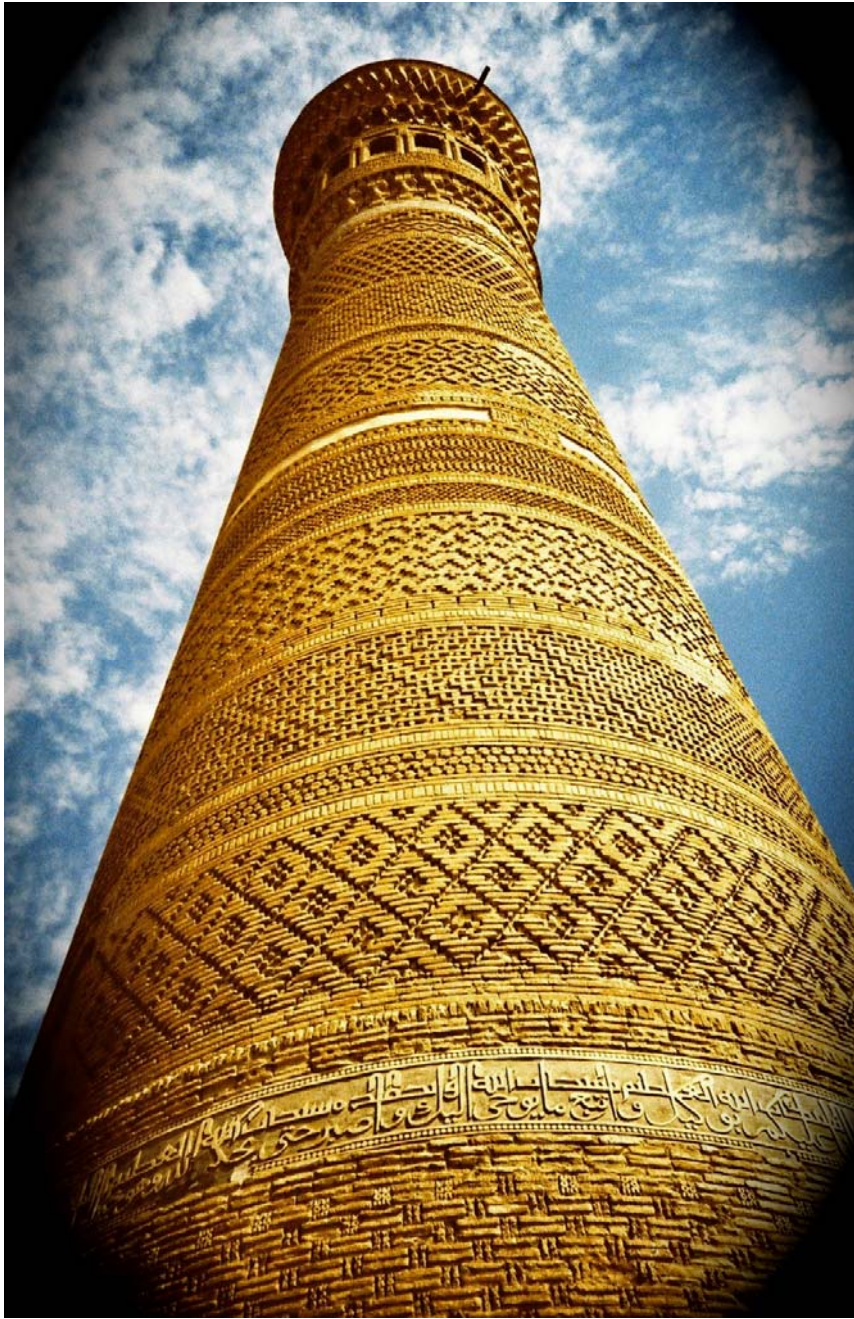






Ongen Kaide

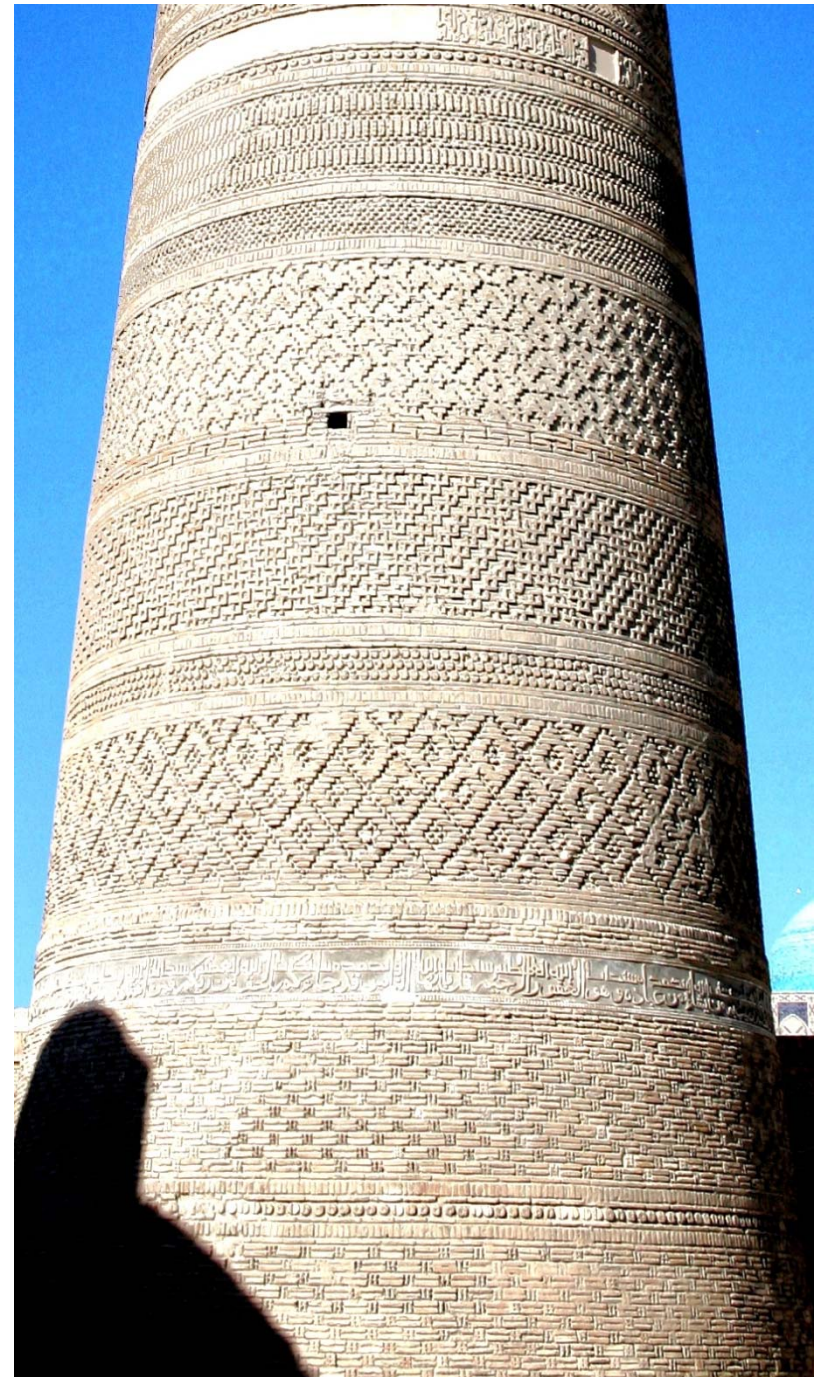
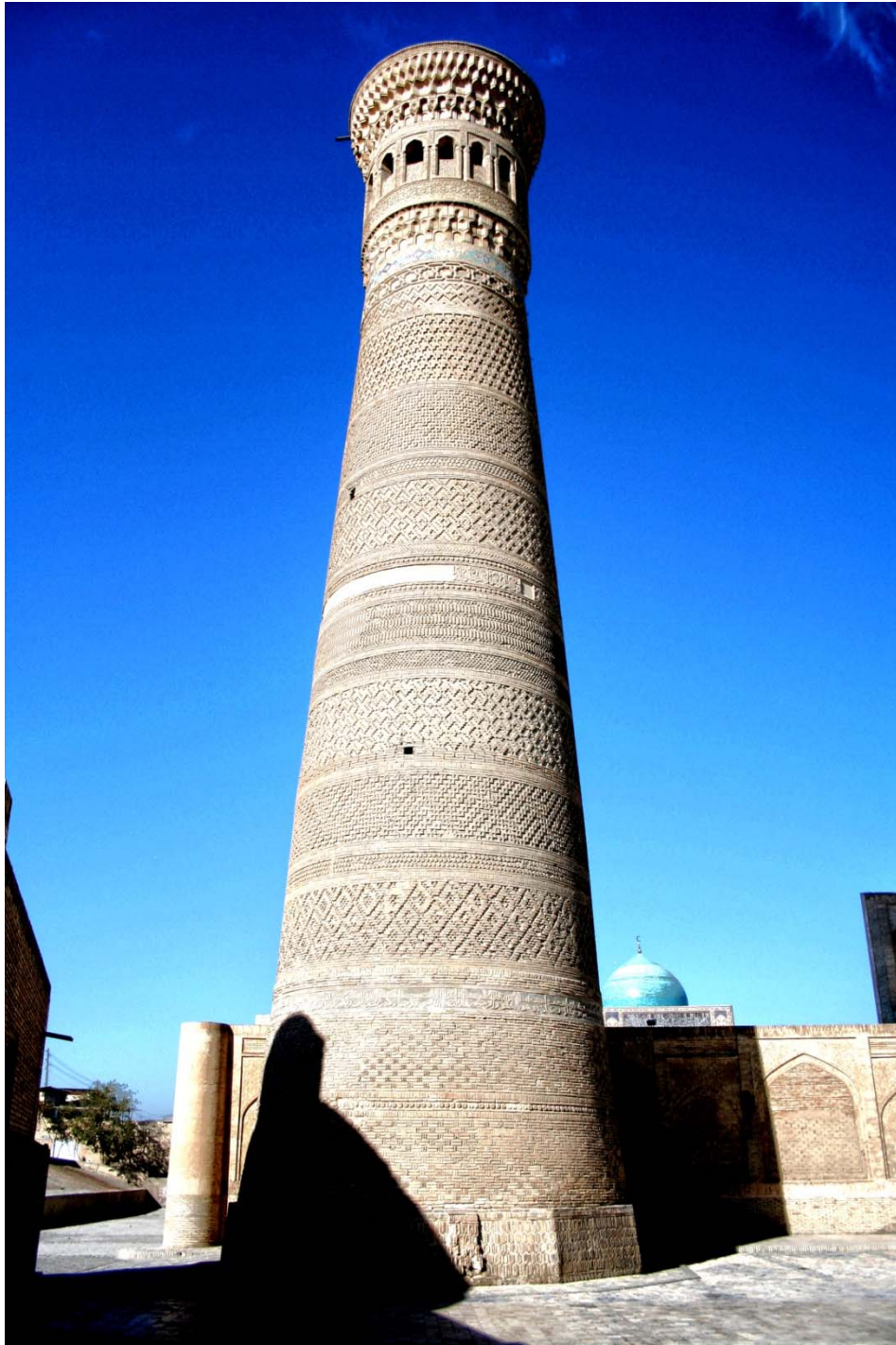






Gövde Çapı
Alt 9.00 m.
Üst 6.00 m.

Gövdede, farklı tipte
sırsız ve sırlı tuğladan
on beş süsleme kuşağı



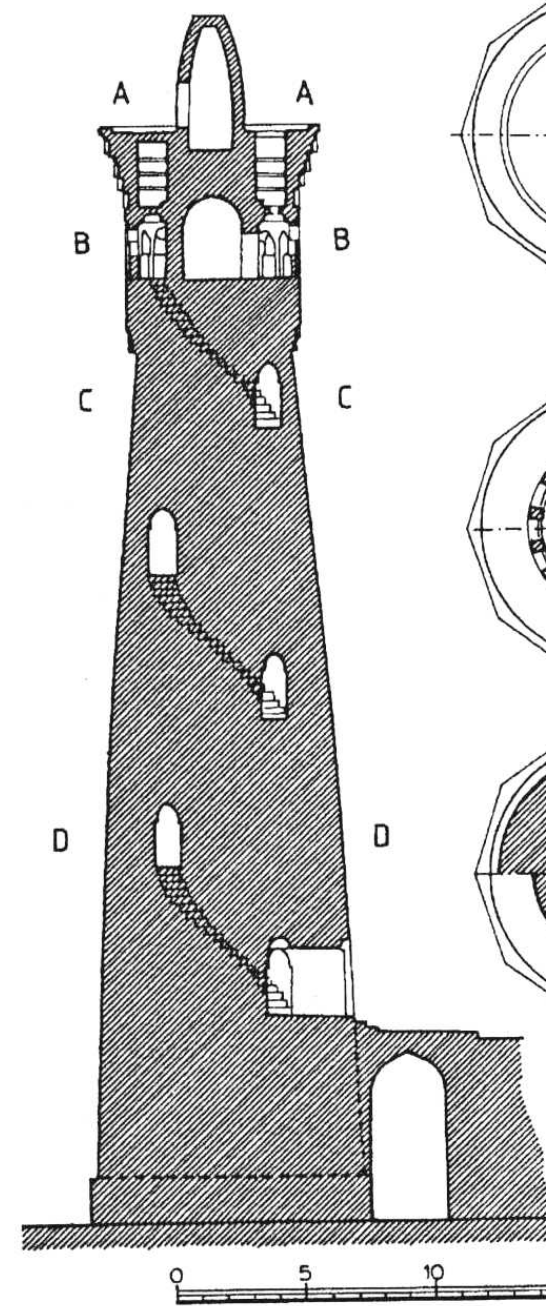


Sivri klah



Merdivenlerde aydınlık,
mazgal aıklıklarından saęlanır.

Minarenin 7 m yükseklikte, sivri kemerli kapısı





Motifler

Eşkenar dörtgen

Yuvarlak

Zencirek

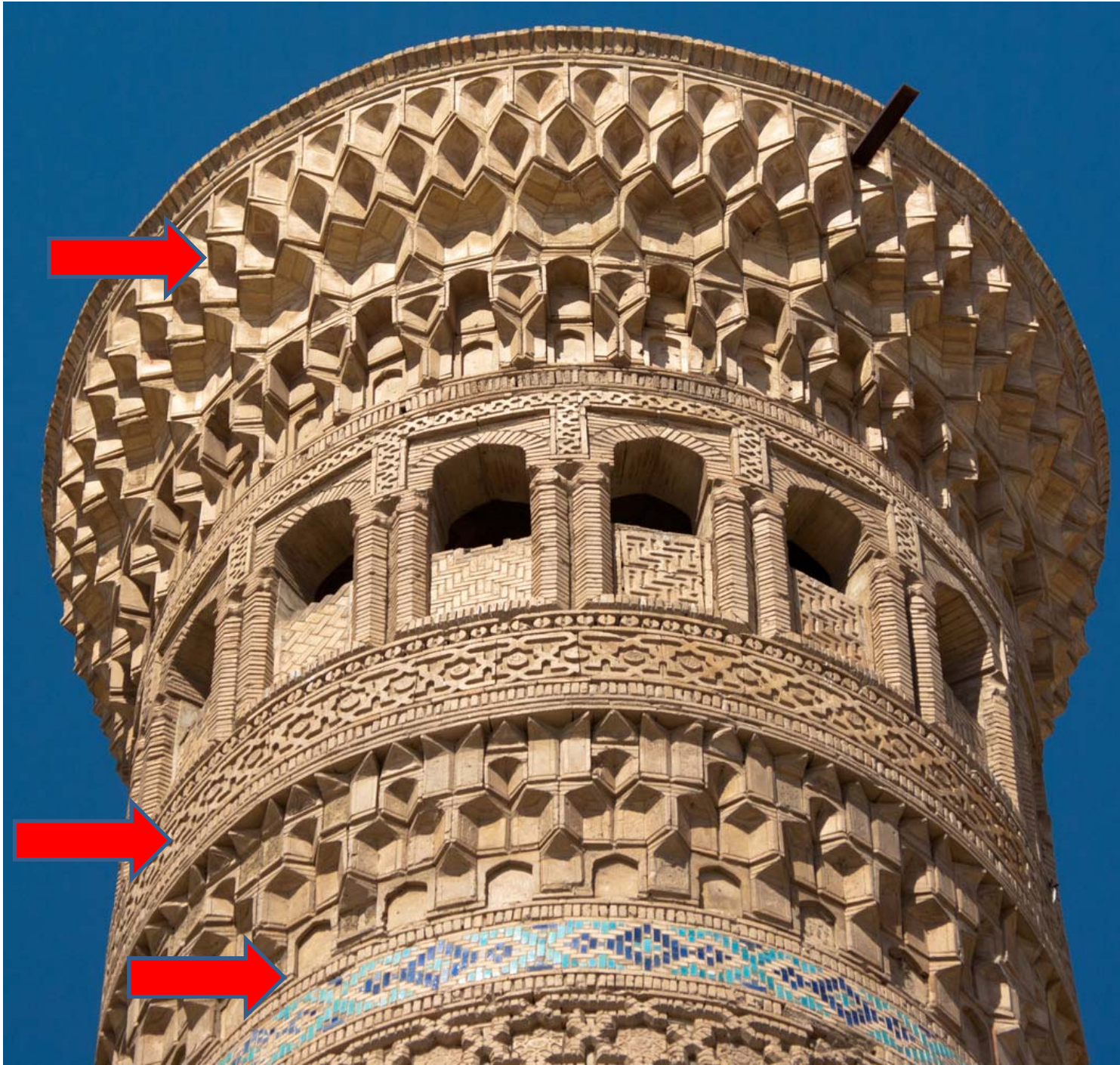
Meander

Zikzak

Haç

Fırıldak

Sekiz köşeli yıldız,



Süsleme Yazı





Kalan Minaresi,
Orta Asya'da minarenin
en muhteşem örneklerinden