

LEARNER DIFFERENCES



Are all fingers on your palm alike?



What is your impression on this?



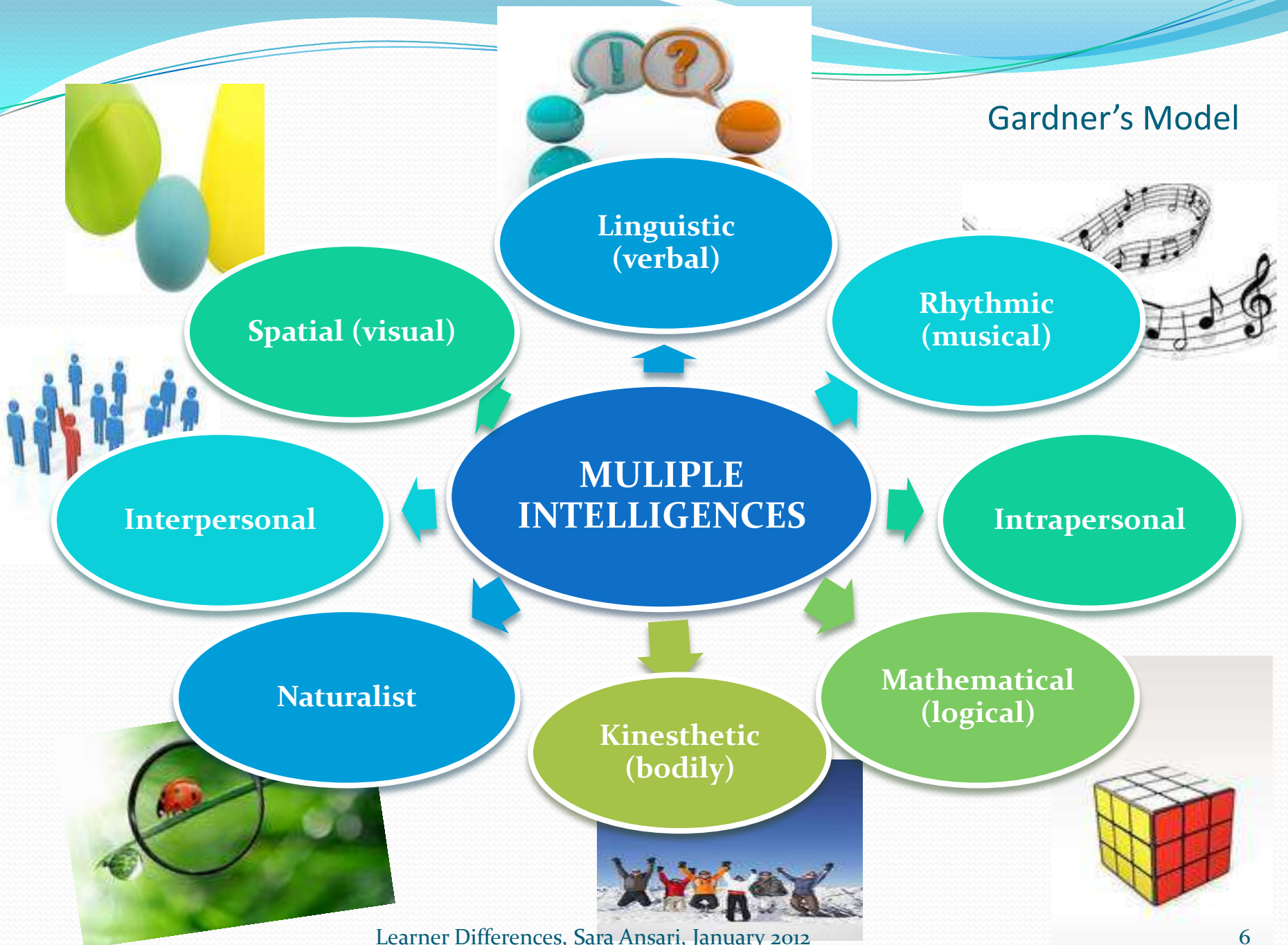
Learner diversity



Aspects of learners that affect their learning:

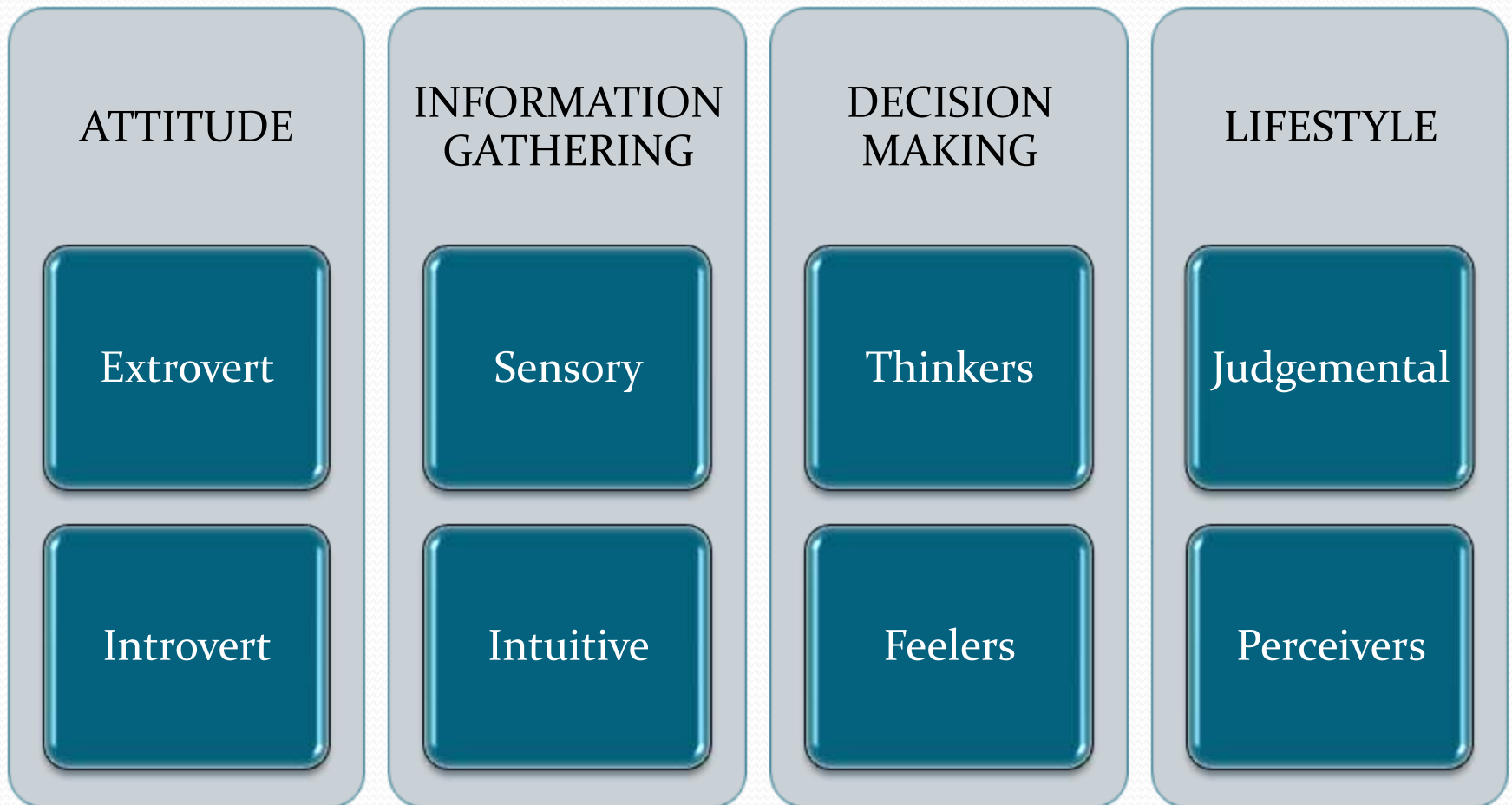
1. Their intelligences
2. Their personality types
3. Their learning preferences
4. Their experiential learning styles
5. Their temperaments

Gardner's Model



Personality Types:

Myers-Brigg model



Sixteen Personality Types:

ISTJ	ISFJ	INFJ	INTJ
ISTP	ISFP	INFP	INTP
ESTP	ESFP	ENFP	ENTP
ESTJ	ESFJ	ENFJ	ENTJ

KEY: extraversion (E), sensing (S), thinking (T), judgment (J), introversion (I), intuition (N), feeling (F), perception (P)

Learner Preferences:

Fleming's VAK model

visual



auditory



kinesthetic



Experiential Learning Styles:

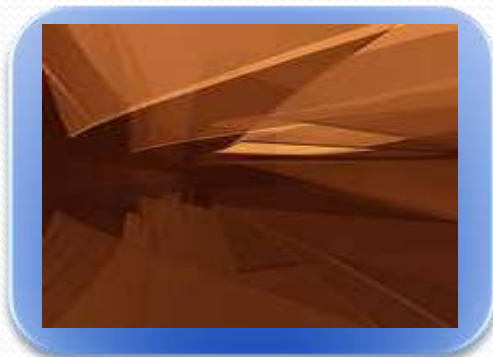
Kolb's Model



Active
Experimentation



Reflective
Observation

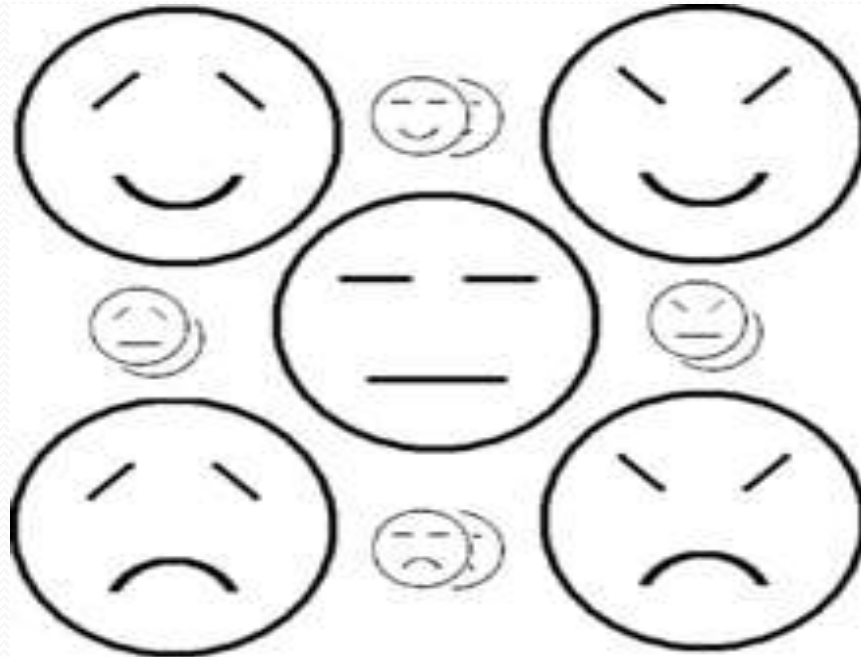


Abstract
Conceptualization



Concrete
Experience

Learner temperament



Learner Temperament

Kersey model

IS_IT_EJ	IS_IF_EJ	IN_IF_EJ	IN_IT_EJ
Inspector	Protector	Counsellor	Mastermind
IS_ET_IP	IS_EF_IP	IN_EF_IP	IN_ET_IP
Crafter	Composer	Healer	Architect
ES_ET_IP	ES_EF_IP	EN_EF_IP	EN_ET_IP
Promoter	Performer	Champion	Inventor
ES_IT_EJ	ES_IF_EJ	EN_IF_EJ	EN_IT_EJ
Supervisor	Provider	Teacher	Field Marshall



One size **doesn't** fit all!



THANK YOU!