



TURİZM COĞRAFYASI

Şehir Turizmi

Global Top 20 Destination Cities Expenditure Breakdown

2016 rank	Destination City	Purpose of Visit		Expenditure Breakdown at Destination						Peak Months for Visiting
		Business	Leisure Plus Other Purposes	Accommodation	Food & Beverage	Shopping	Local Transport	Local Services	Misc.	
1	Bangkok	14.4%	85.6%	26.0%	19.4%	21.7%	9.9%	20.8%	2.2%	April, January
2	London	20.9%	79.1%	30.1%	16.5%	46.7%	4.3%	1.9%	0.5%	July-August
3	Paris	29.7%	70.3%	44.8%	23.6%	16.7%	6.6%	8.3%	0.0%	December, March-May
4	Dubai	20.0%	80.0%	27.0%	15.0%	31.0%	9.0%	18.0%	0.0%	December-January
5	New York	13.6%	86.4%	29.1%	18.9%	24.7%	11.4%	13.1%	2.7%	July-August
6	Singapore	22.7%	77.3%	29.0%	12.3%	22.5%	4.5%	31.8%	0.0%	December, July-August
7	Kuala Lumpur	26.8%	73.2%	30.8%	16.0%	30.7%	12.8%	7.0%	2.7%	December-January, March, July
8	Istanbul	9.2%	90.8%	20.4%	30.8%	24.6%	11.0%	7.1%	6.1%	June-September
9	Tokyo	27.5%	72.5%	28.2%	20.3%	43.1%	6.9%	1.4%	0.3%	April, October, July
10	Seoul	16.3%	83.7%	24.1%	9.8%	58.7%	2.7%	2.8%	1.8%	December-January, October
11	Hong Kong	23.4%	76.6%	35.4%	19.5%	30.9%	4.5%	5.8%	4.0%	October-December
12	Barcelona	9.7%	90.3%	35.2%	29.0%	16.9%	6.8%	12.1%	0.0%	July-August
13	Amsterdam	27.0%	73.0%	44.0%	25.0%	11.9%	8.3%	4.8%	6.0%	July-August
14	Milan	27.2%	72.8%	40.4%	20.9%	20.1%	12.7%	5.8%	0.1%	July-August
15	Taipei	13.4%	86.6%	32.7%	15.0%	33.9%	13.6%	3.6%	1.2%	March, November-December
16	Rome	13.6%	86.4%	40.4%	20.9%	20.1%	12.7%	5.8%	0.1%	July-August
17	Osaka	12.0%	88.0%	23.5%	22.4%	43.4%	7.0%	1.9%	1.8%	April, July
18	Vienna	17.9%	82.1%	40.1%	18.7%	10.1%	12.5%	18.6%	0.0%	June-July
19	Shanghai	54.6%	45.4%	21.2%	9.9%	28.6%	4.8%	22.3%	13.3%	October, August, December
20	Prague	12.8%	87.2%	29.2%	27.4%	25.5%	4.8%	13.2%	0.0%	June-July

Historical data in each time series presented above has been updated with the latest figures or estimations and may not be comparable to the time series from previous editions of this report.

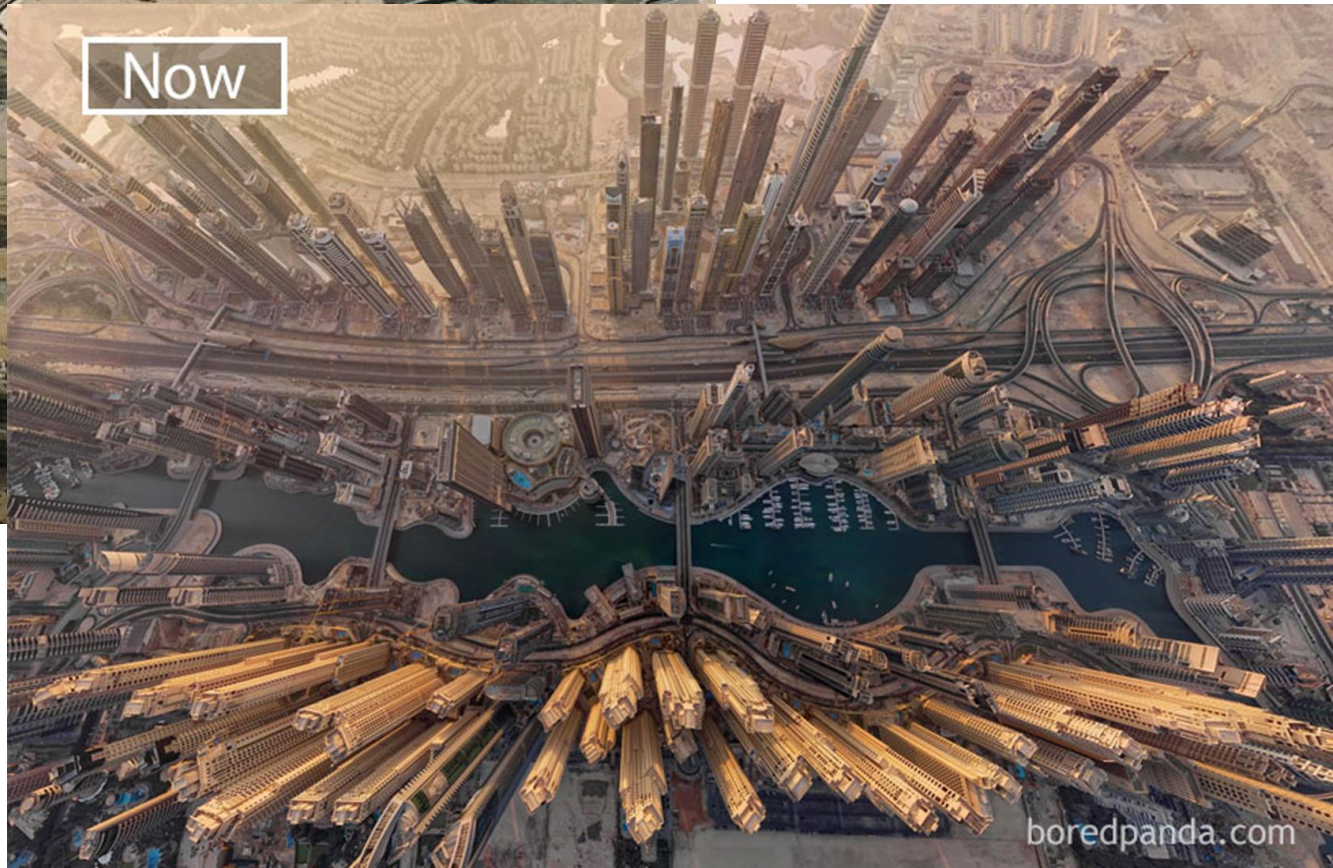
These details combine to form more granular profiles for each of these destination cities, and highlight their differences. For example, a vast majority of international visitors to Bangkok are there for leisure as opposed to business. Compare this to Shanghai, where a slight majority are there for business purposes.

Dubai

2000



Now



Seul

1900



Now



Abu Dhabi

1970

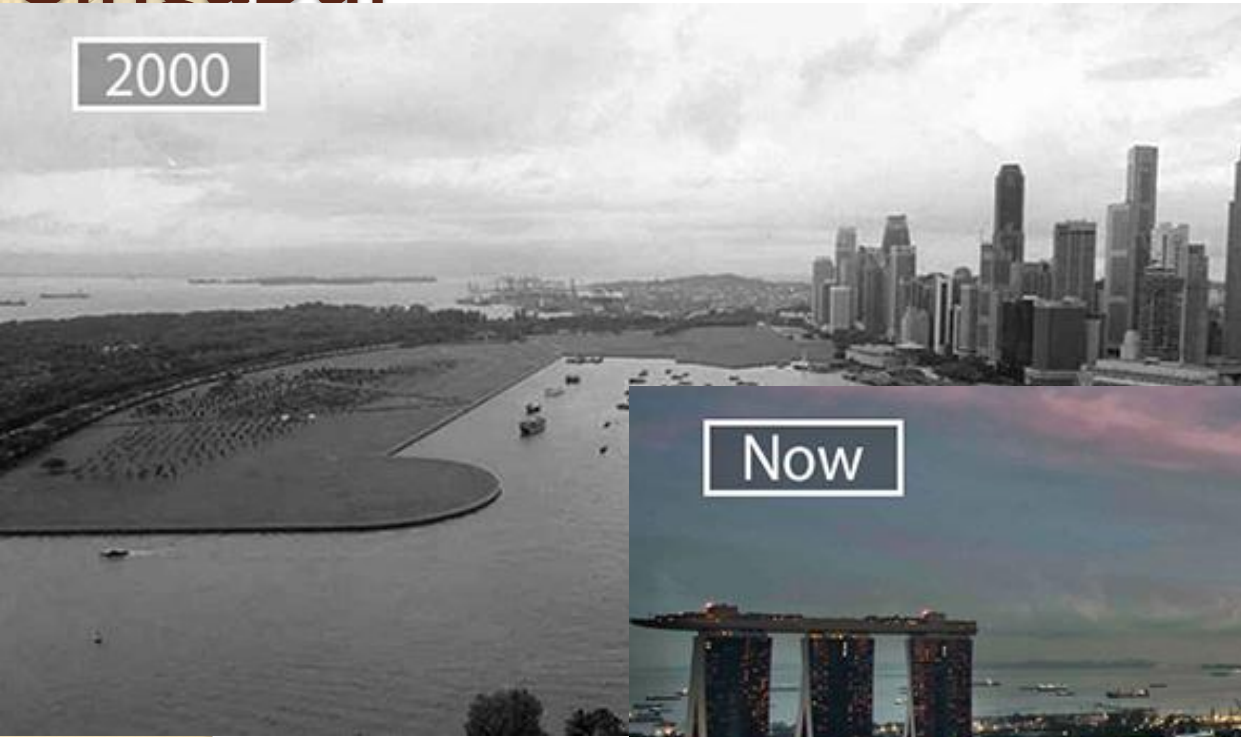


Now



Singapur

2000



Now



Tokyo

1945



Now



Dubai

2005



Now



Rio de Janeiro

1930



Now



Sidney

1932

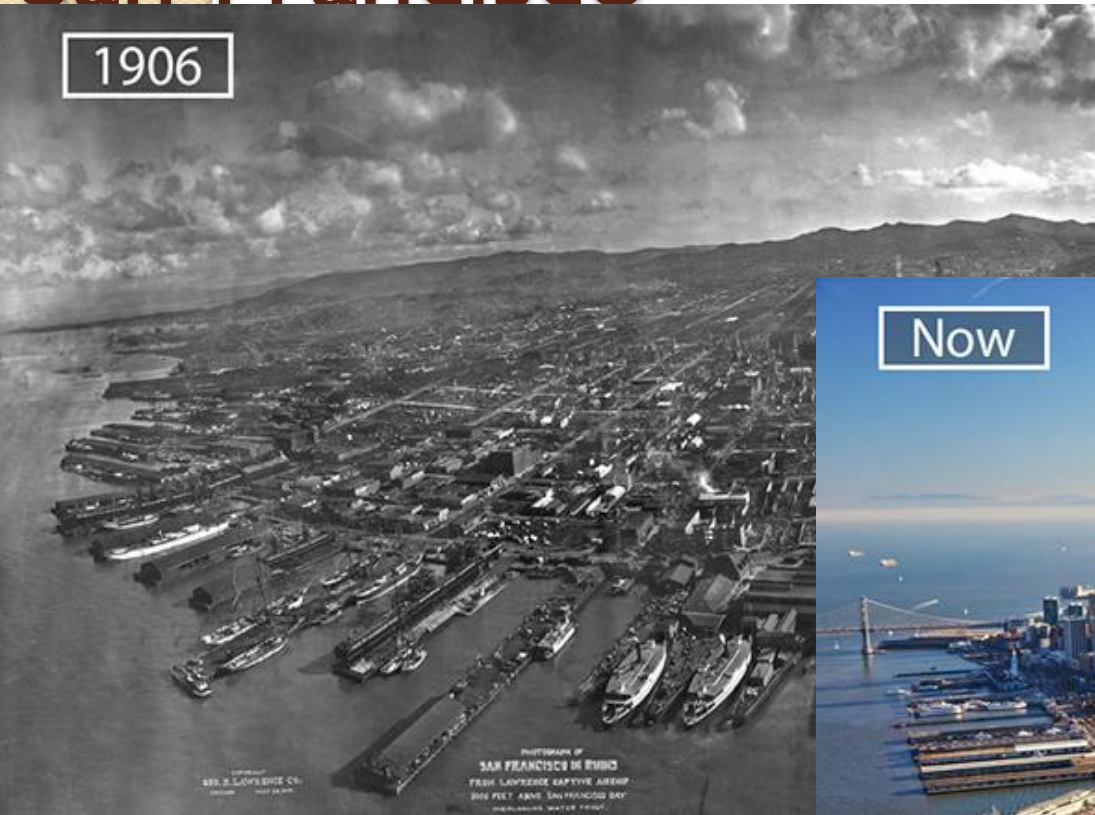


Now



San Francisco

1906



Now

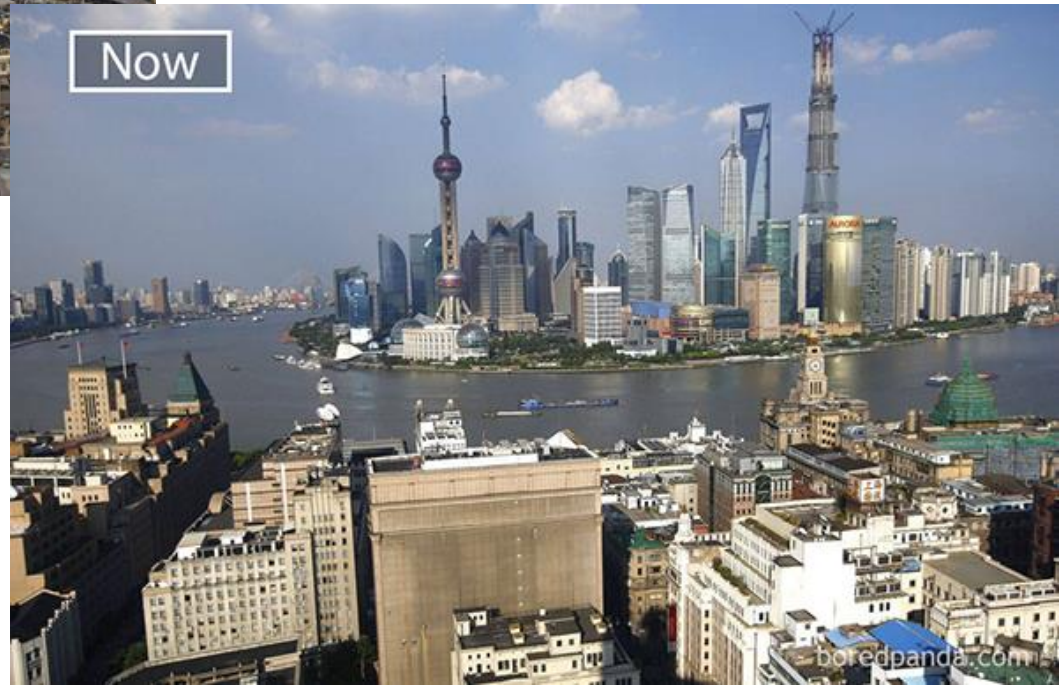


Shanghai

1987



Now



Kuala Lumpur

1920



Now



New York

1962



Now



Londra

1920



Now

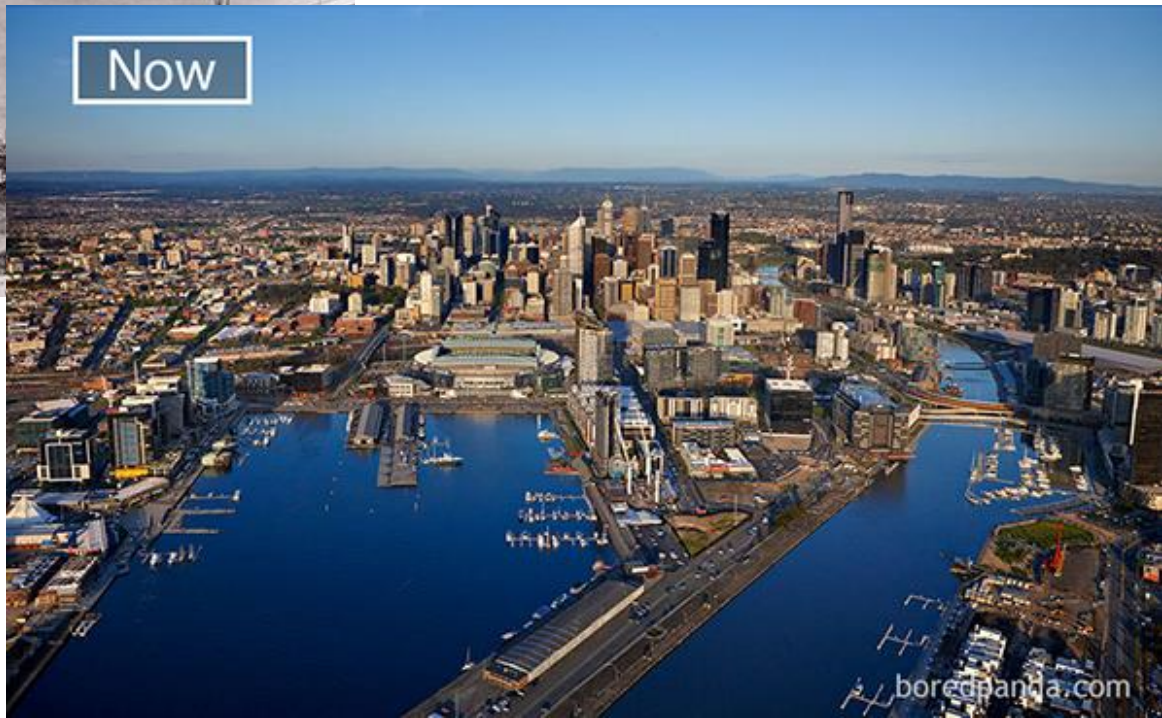


Melbourne

1920



Now



Jakarta

1960



Now



Toronto

1930



Now



Berlin



Bangkok

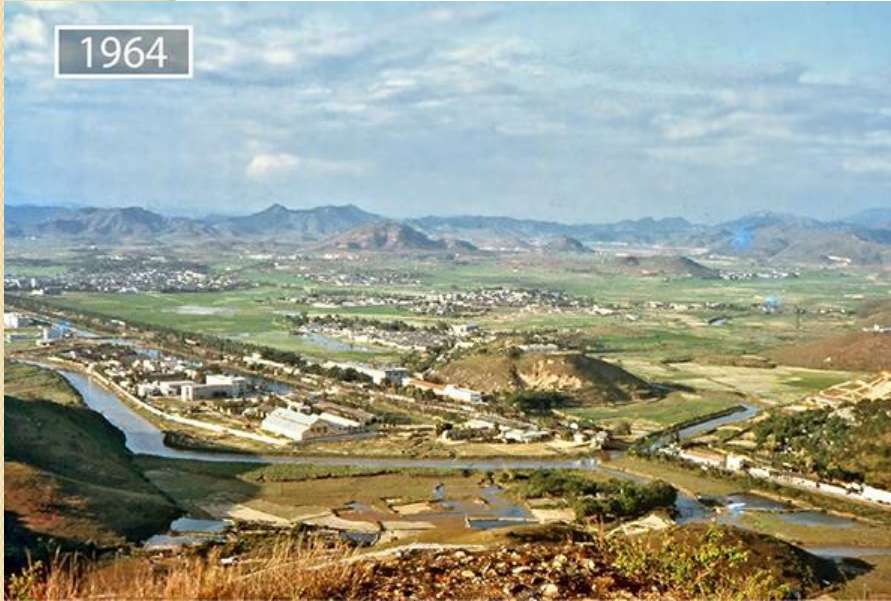


Fortaleza



Shenzhen

1964



Now



boredpanda.com



