

YÖRESİ  
ERZURUM

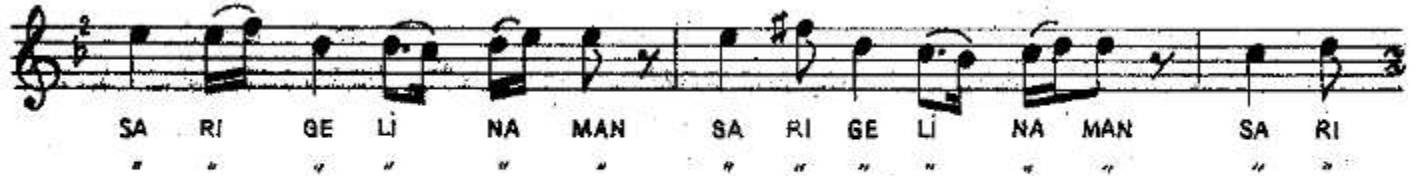
DERLEME TARİHİ

KİMDEN ALINDIĞI  
FARUK KALELİ

# ERZURUM ÇARŞI PAZAR

NOTAYA ALAN  
M. SARISOZEN

SÜRESİ :



ERZURUM ÇARŞI PAZAR  
(2)

The image shows two staves of musical notation in 2/8 time. The first staff contains the melody for the first line of the song, with lyrics 'SA RI GE Lİ NA MAN SA RI GE Lİ NA MAN' written below it. The second staff contains the melody for the second line, with lyrics 'SA RI GE Lİ NA MAN SU NA YÂ RİM' written below it. The notes are mostly quarter and eighth notes, with some rests and accidentals.

(1)

ERZURUM ÇARŞI PAZAR (NEYNİM AMMAN AMAN, NEYNİM AMMAN AMAN, NEYNİM AMMAN AMAN SARI GELİN)  
İÇİNDE BİR KIZ GEZER (HOP NİNEM ÖLSÜN SARI GELİN AMAN, SARI GELİN AMAN, SARI GELİN AMAN, SUNA YÂRİM)  
ELİNDE DİVİT KALEM (NEYNİM AMMAN AMAN, NEYNİM AMMAN AMAN, NEYNİM AMMAN AMAN SARI GELİN)  
KATLİME FERMAN YAZAR (HOP NİNEM ÖLSÜN SARI GELİN AMAN, SARI GELİN AMAN, SARI GELİN AMAN, SUNA YÂRİM)

(2)

PALAN DÖKEN YÜCE DAĞ (NEY.....  
ALTI MOR SÜNBUĞLÜ BAĞ (HOP.....  
SENİ VERMEM YADLARA (NEY.....  
NİCEKİ BU CANIM SAĞ (HOP.....